

**VONDOM<sup>®</sup>**

OUTDOOR RUGS



## CONTENTS

2	We are VONDOM
5	Outdoor rugs / Alfombras de exterior
6	Zebra
10	Azulejo
14	Las Flores de Klee
18	Moonbeam
22	Overlap
26	You and Me
30	Twist and Shout
34	Marquis
38	Faz
42	Vela
46	Lines XL
50	Lines XS
54	F3
58	Ufo
62	Koi
66	Piano Piano
70	Agatha
74	Lisa
78	Looking after and cleaning / Limpieza y mantenimiento
80	Technical features / Características técnicas

## OUTDOOR RUGS



VONDOM®



ZEBRA by Javier Mariscal

ZEBRA  
by Javier Mariscal



Zebra 2 x 2,7 m  
78 3/4" x 106 1/4"  
ref: 62006

VONDOM®



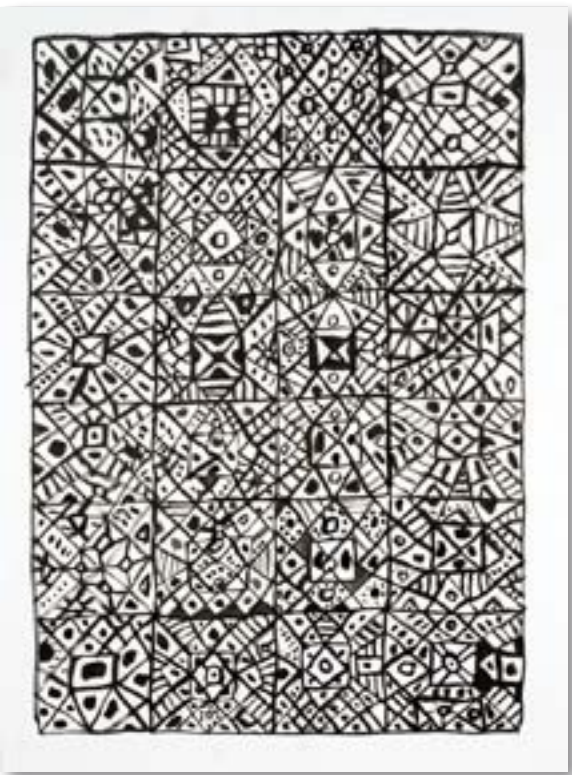
AZULEJO by Javier Mariscal



# AZULEJO

by Javier Mariscal

VONDOM®



Azulejo 2 x 2,7 m  
78 3/4" x 106 1/4"  
ref: 62005



LAS FLORES  
DE KLEE by Javier Mariscal





LAS FLORES  
DE KLEE by Javier Mariscal

VONDOM®



Las Flores de Klee 2 x 2,7 m  
78 ¾" x 106 ¼"  
ref: 62007



MOONBEAM by A-cero



# MOONBEAM

by A-cero



Moonbeam 2 x 3 m  
78 3/4" x 118 1/4"  
ref. 62001



OVERLAP by A-cero



# OVERLAP

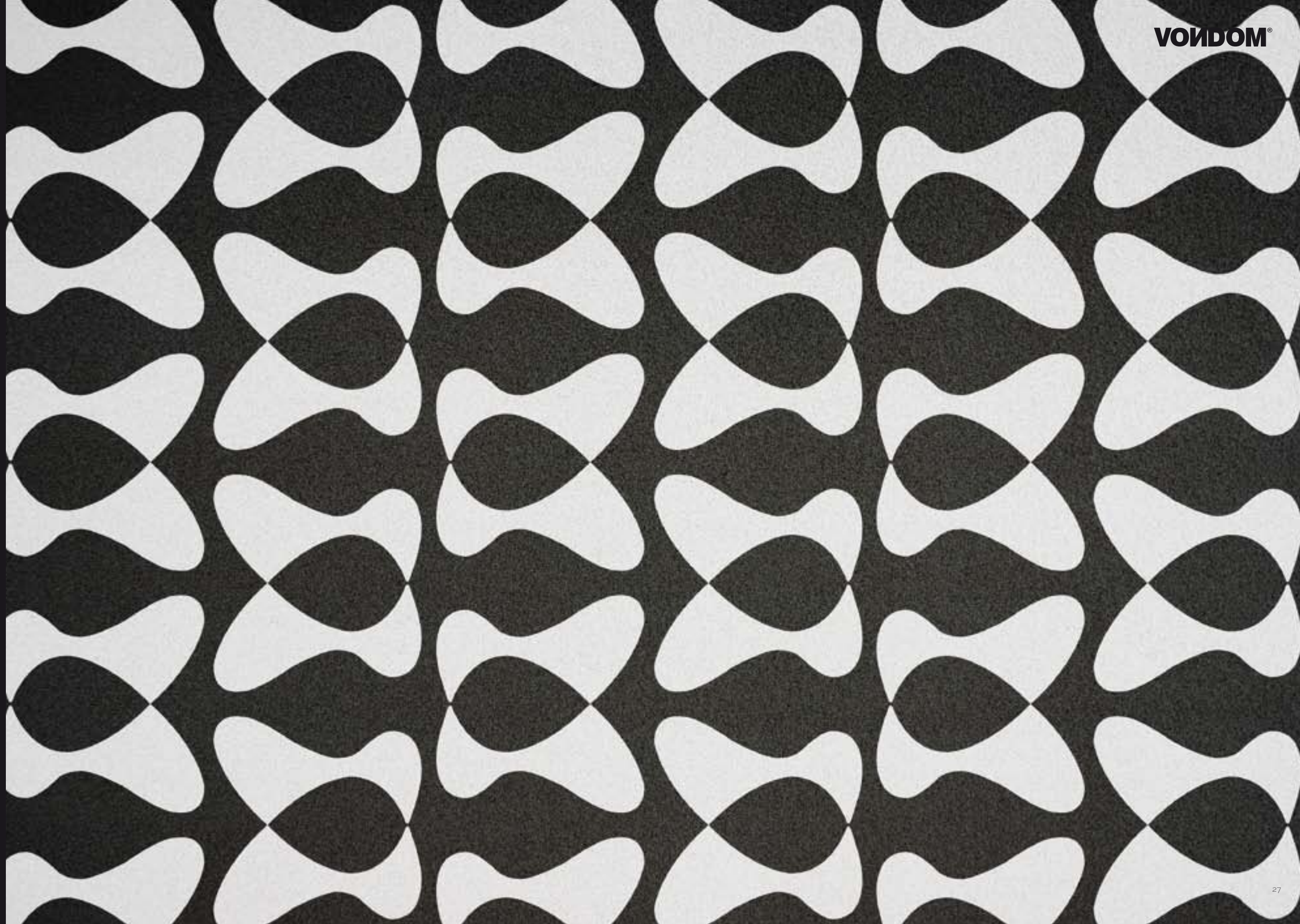
by A-cero



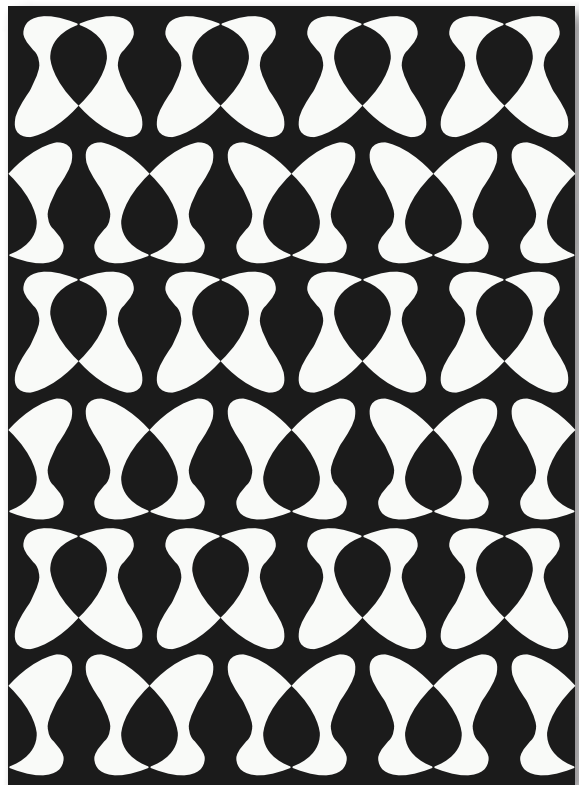
Overlap 2 x 4,4 m  
78 3/4" x 172"  
ref: 62002



YOU&ME by Karim Rashid



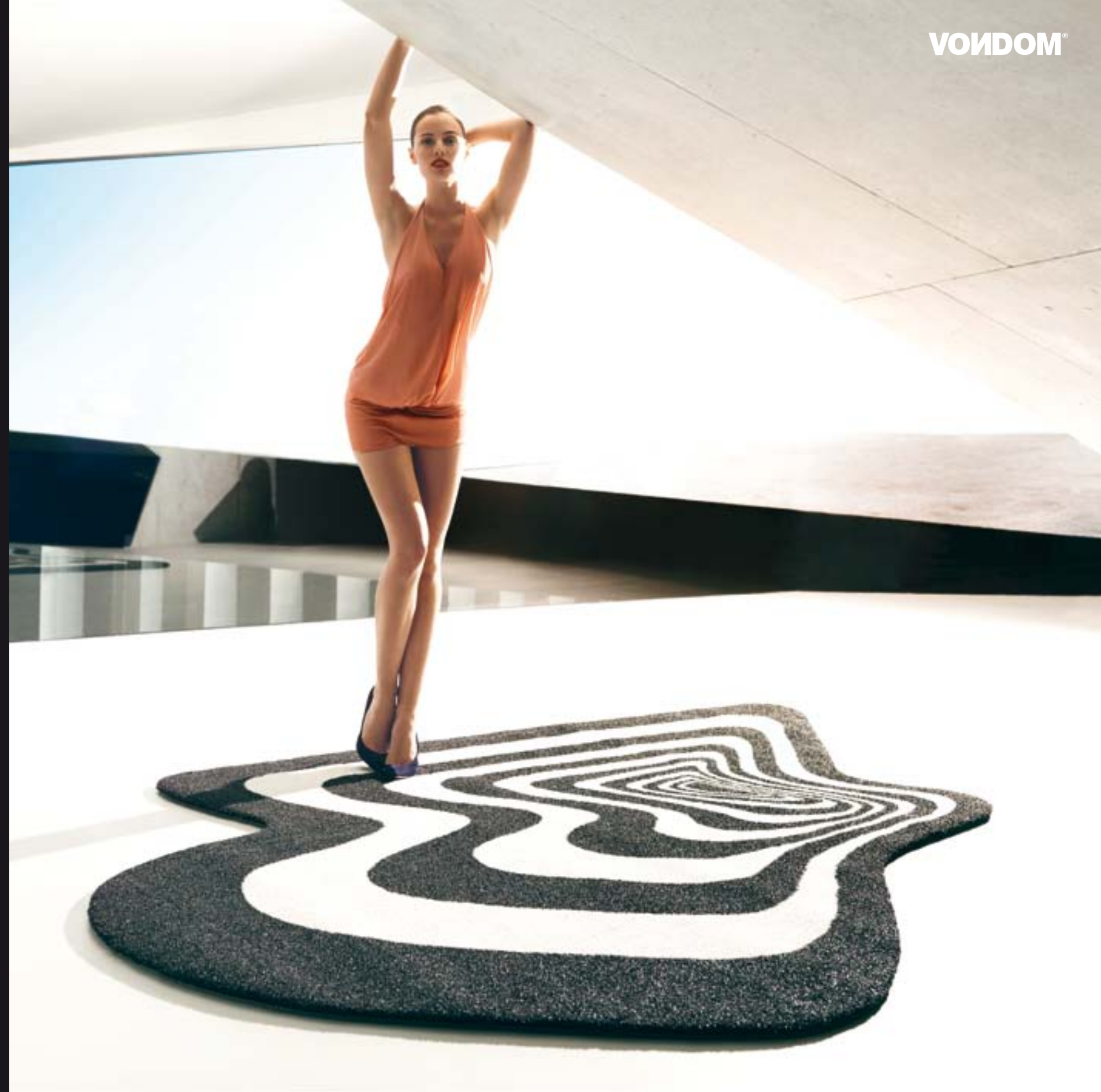
YOU&ME  
by Karim Rashid



You and me 2 x 2,7 m  
78 3/4" x 106 1/4"  
ref: 62004



TWIST&SHOUT by Karim Rashid





# TWIST&SHOUT

by Karim Rashid

VONDOM®



Twist and shout 2 x 2,7 m  
78 3/4" x 106 1/4"  
ref. 62003



MARQUIS by JMFerrero



# MARQUIS

by JMFerrero

VONDOM®

Marquis Ø2 m



Ø78 ¾"  
ref: 62021



Ø78 ¾"  
ref: 62050



Ø78 ¾"  
ref: 62048



Ø78 ¾"  
ref: 62052



Ø78 ¾"  
ref: 62054

Marquis 2 x 3 m



78 ¾" x 118 ¼"  
ref: 62022



78 ¾" x 118 ¼"  
ref: 62051



78 ¾" x 118 ¼"  
ref: 62049



78 ¾" x 118 ¼"  
ref: 62053



78 ¾" x 118 ¼"  
ref: 62055

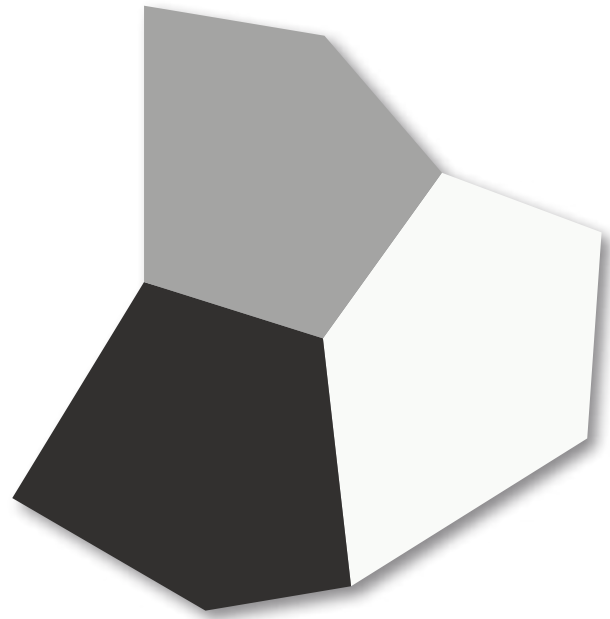


FAZ by Ramon Esteve

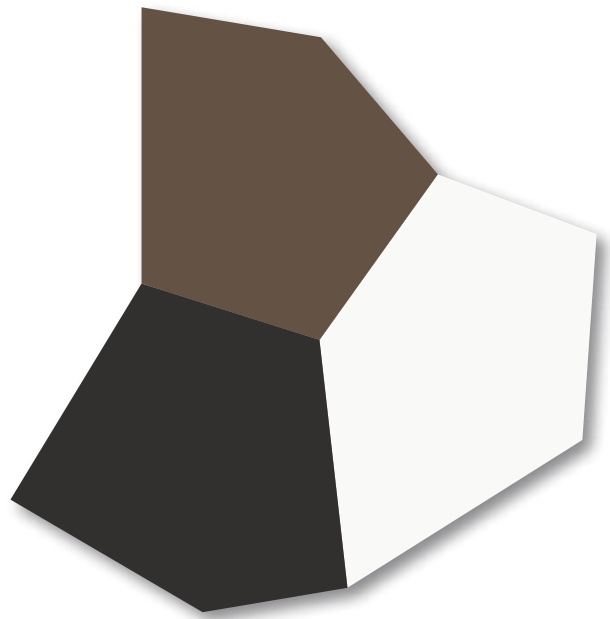
FAZ  
by Ramon Esteve



Faz 4 x 3,8 m  
157 1/2" x 149 3/4"  
Gold, White and Bronze  
Oro, Blanco y Bronce  
ref: 62009



Faz 4 x 3,8 m  
157 1/2" x 149 3/4"  
Grey, Black and white  
Gris, Negro y Blanco  
ref: 62008

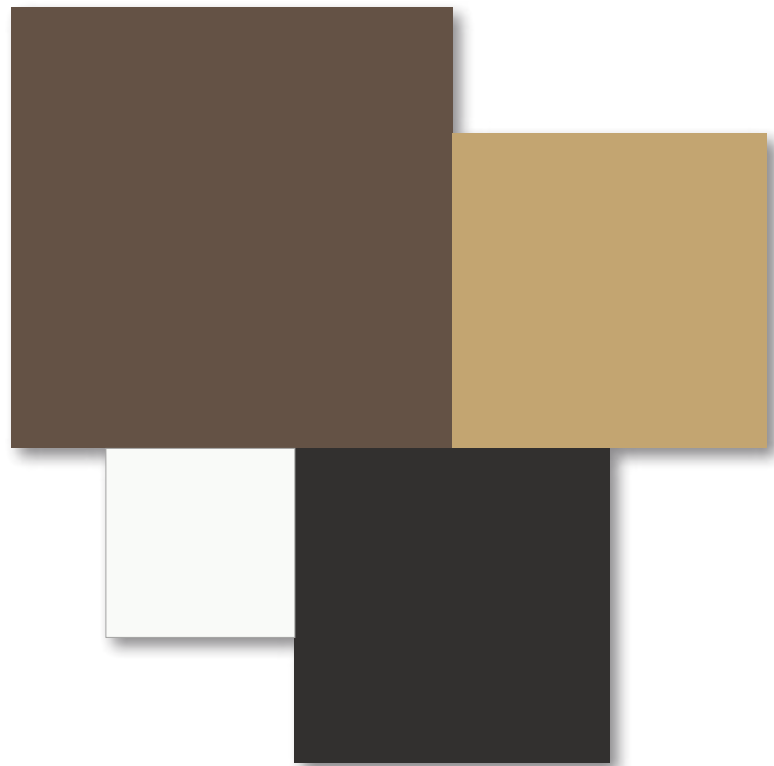


Faz 4 x 3,8 m  
157 1/2" x 149 3/4"  
Black, White and Bronze  
Negro, Blanco y Bronce  
ref: 62025



VELA by Ramon Esteve

VELA  
by Ramon Esteve



Vela 4 x 4 m  
157 1/2" x 157 1/2"  
ref. 62010

VONDOM®



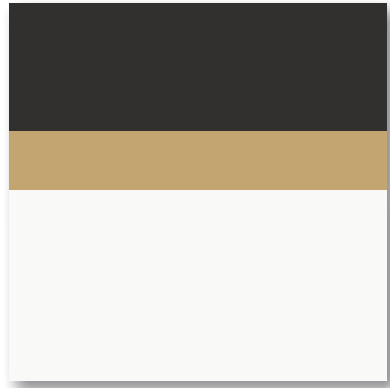
# LINES XL

by Ramon Esteve

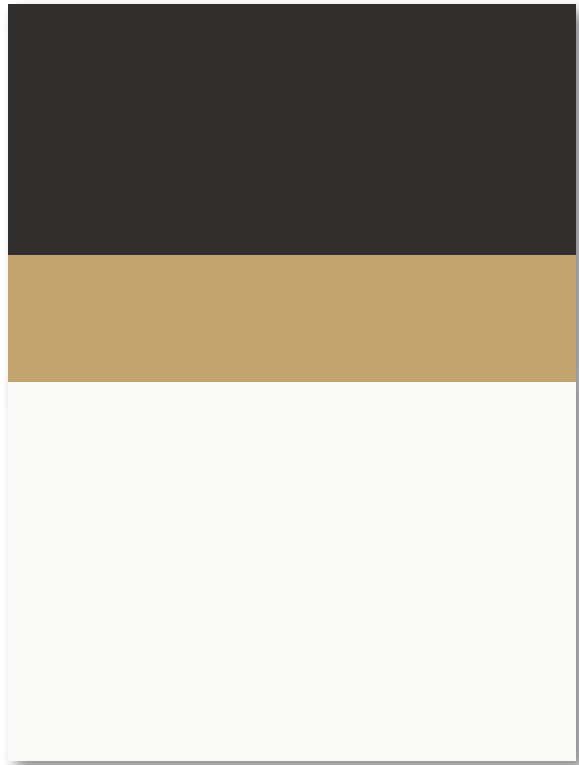


# LINES XL

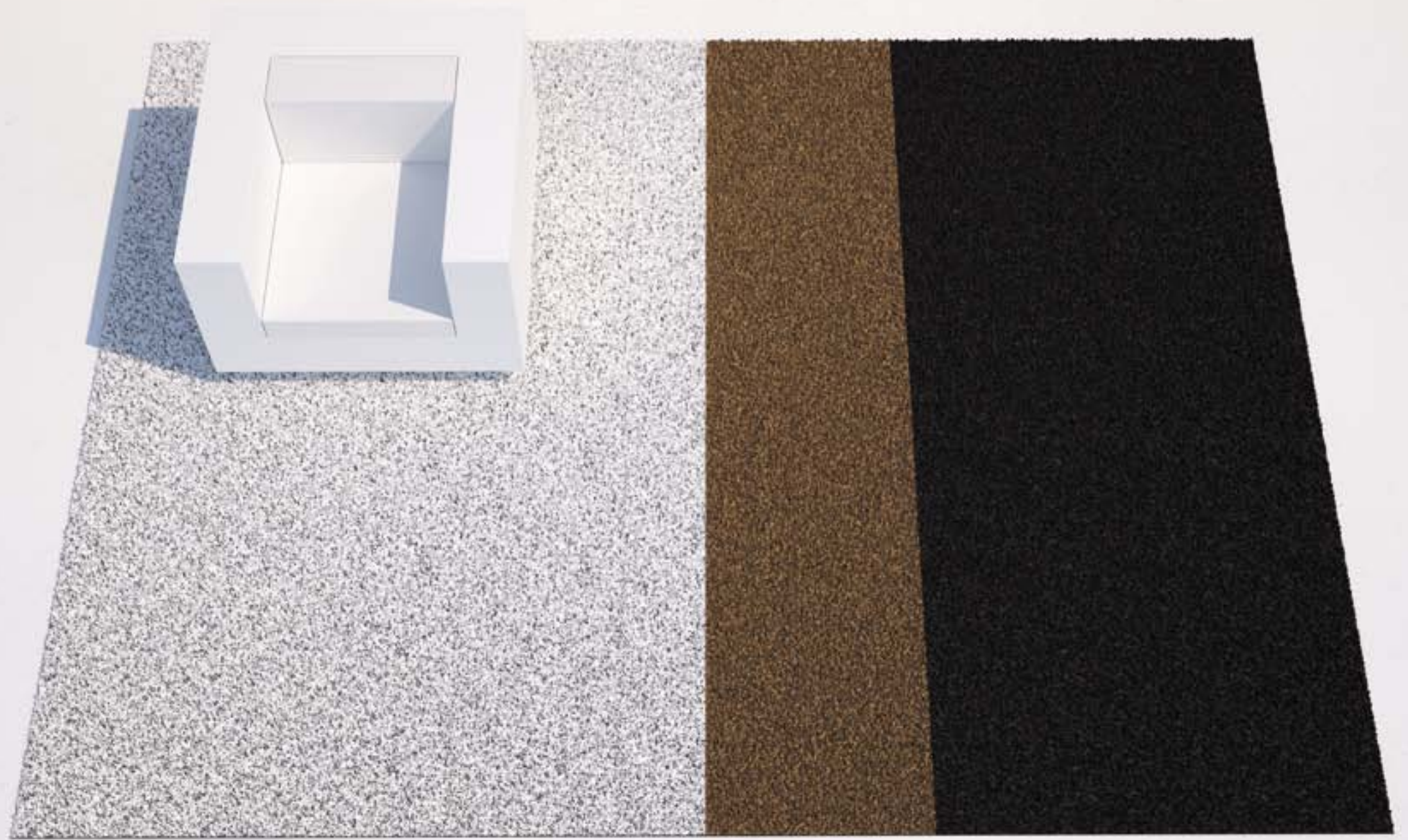
by Ramon Esteve



Lines XL 2 x 2 m  
78 ¾" x 78 ¾"  
ref: 62012



Lines XL 3 x 4 m  
118 ¼" x 157 ½"  
ref: 62011



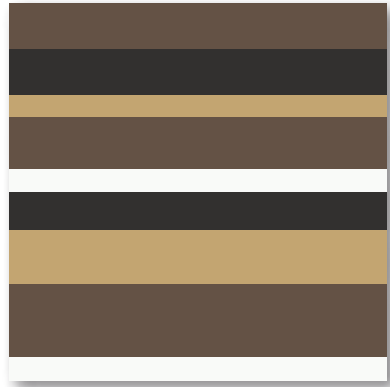
# LINES XS

by Ramon Esteve

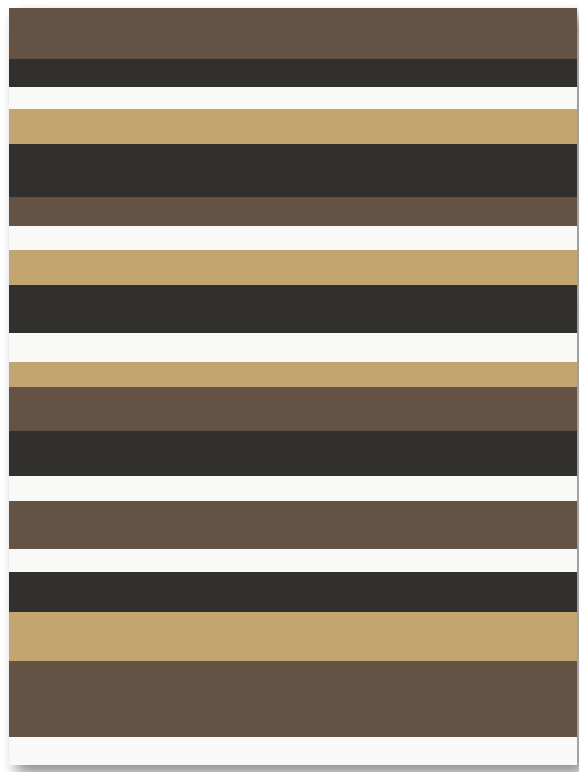


# LINES XS

by Ramon Esteve



Lines XS 2 x 2 m  
78 ¾" x 78 ¾"  
ref. 62014



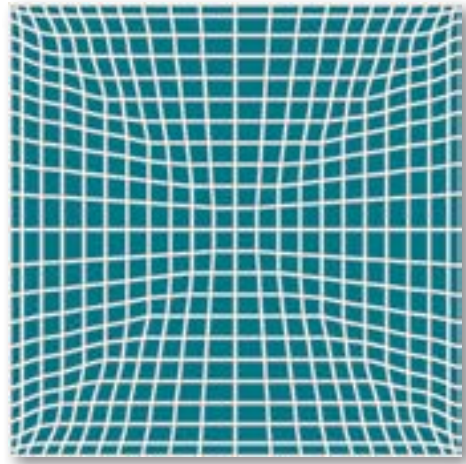
Lines XS 3 x 4 m  
118 ¼" x 157 ½"  
ref. 62013



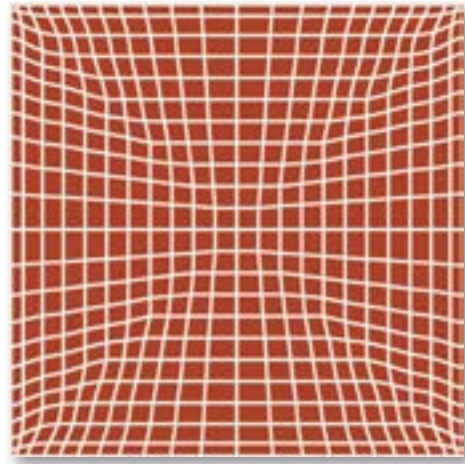
*f*<sup>3</sup> by Fabio Novembre



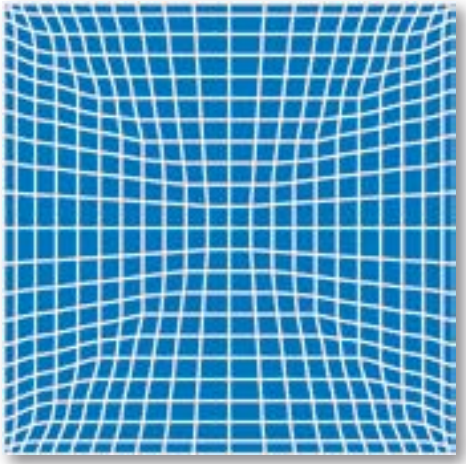
VONDOM®



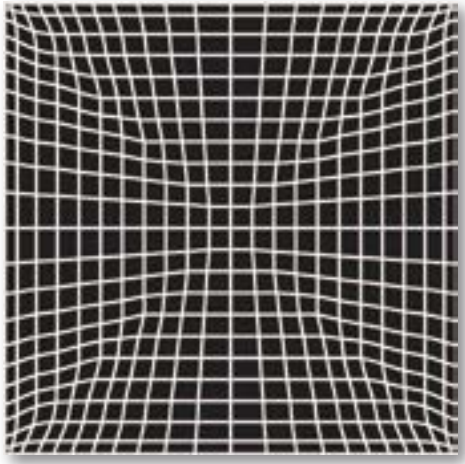
F3 2 x 2 m  
78 3/4" x 78 3/4"  
Green  
Verde  
ref: 62026



F3 2 x 2 m  
78 3/4" x 78 3/4"  
Reddish  
Rojizo  
ref: 62027



F3 2 x 2 m  
78 3/4" x 78 3/4"  
Blue  
Azul  
ref: 62029



F3 2 x 2 m  
78 3/4" x 78 3/4"  
Black  
Negro  
ref: 62028

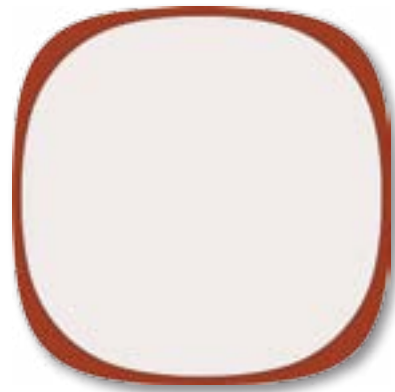


UFO by Ora-ito





Ufo 4 x 4 m  
157 1/2" x 157 1/2"  
Brown  
Marrón  
ref: 62035



Ufo 4 x 4 m  
157 1/2" x 157 1/2"  
Reddish  
Rojizo  
ref: 62034



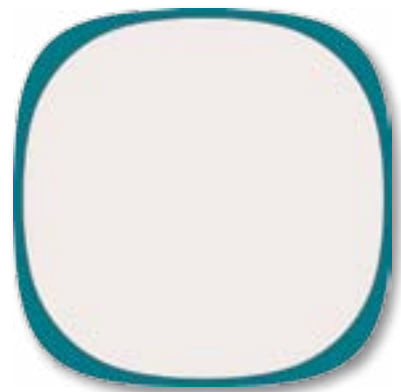
Ufo 4 x 4 m  
157 1/2" x 157 1/2"  
Grey  
Gris  
ref: 62033



Ufo 4 x 4 m  
157 1/2" x 157 1/2"  
Gold  
Oro  
ref: 62030



Ufo 4 x 4 m  
157 1/2" x 157 1/2"  
Black  
Negro  
ref: 62031



Ufo 4 x 4 m  
157 1/2" x 157 1/2"  
Green  
Verde  
ref: 62032



KOI by Teresa Sapey





Koi  
by Teresa Sapey



Koi 2 x 3 m  
78 3/4" x 118 1/4"  
Orange / Grey  
Naranja / Gris  
ref: 62036



Koi 2 x 3 m  
78 3/4" x 118 1/4"  
Grey / Pink  
Gris / Fucsia  
ref: 62037



Koi 2 x 3 m  
78 3/4" x 118 1/4"  
Grey / Green  
Gris / Verde  
ref: 62038



Koi 2 x 3 m  
78 3/4" x 118 1/4"  
Green / Orange  
Verde / Naranja  
ref: 62039

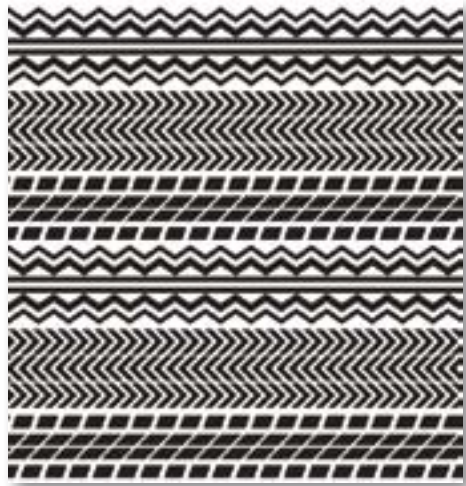


PIANO PIANO by Teresa Sapey



# PIANO PIANO

by Teresa Sapey



Piano Piano 2 x 2 m  
78 ¾" x 78 ¾"

White  
Blanco  
ref: 62040



Piano Piano 2 x 2 m  
78 ¾" x 78 ¾"

Pink  
Fucsia  
ref: 62041



Piano Piano 2 x 2 m  
78 ¾" x 78 ¾"

Red  
Rojo  
ref: 62042



Piano Piano 2 x 2 m  
78 ¾" x 78 ¾"

Green  
Verde  
ref: 62043



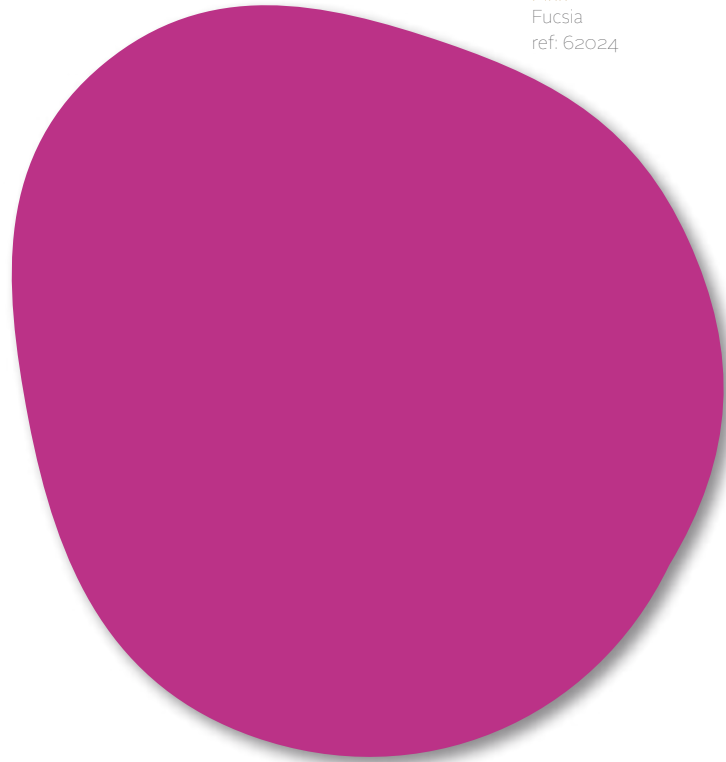
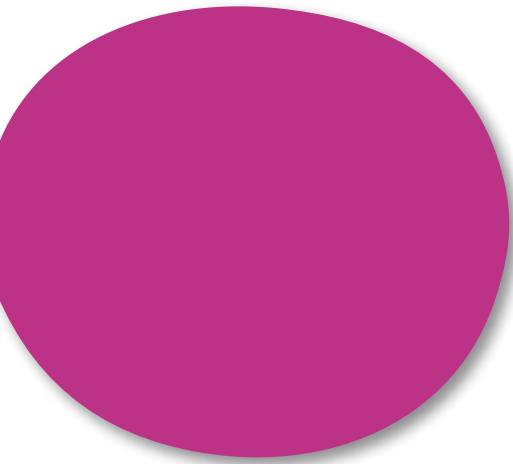
AGATHA by Agatha Ruiz de la Prada

# AGATHA

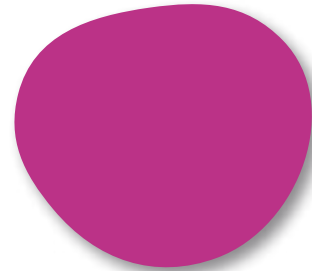
by Agatha Ruiz de la Prada

Agatha 2 x 1,9 m  
78 ¾" x 74 ¾"  
Pink  
Fucsia  
ref: 62024

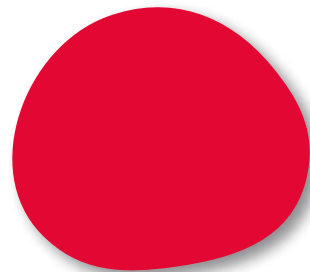
Agatha 1,3 x 1,1 m  
51 ½" x 43 ¾"  
Pink  
Fucsia  
ref: 62044



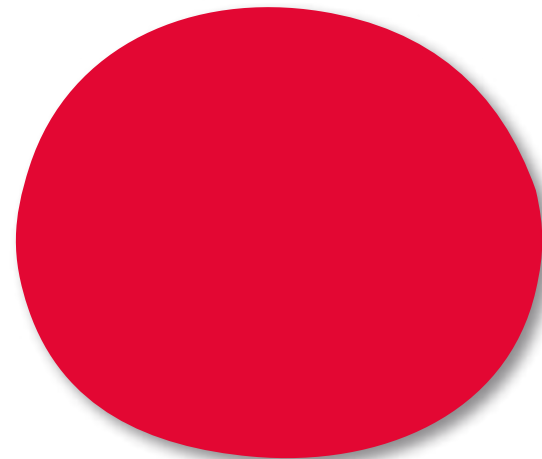
Agatha 0,7 x 0,8 m  
27 ½" x 31 ½"  
Pink  
Fucsia  
ref: 62046



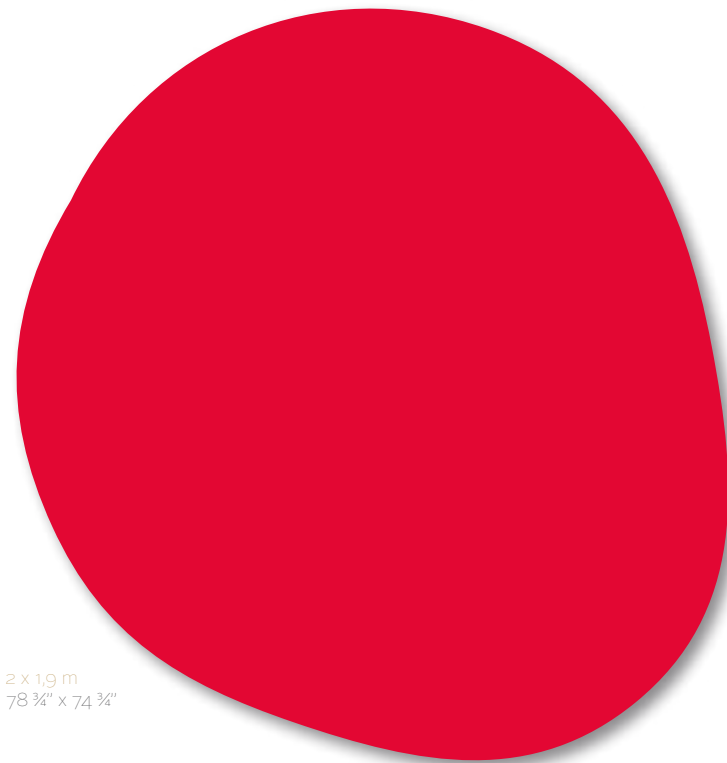
Agatha 0,7 x 0,8 m  
27 ½" x 31 ½"  
Red  
Rojo  
ref: 62047



Agatha 1,3 x 1,1 m  
51 ½" x 43 ¾"  
Red  
Rojo  
ref: 62045

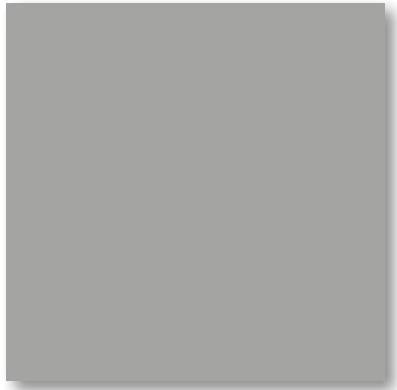


Agatha 2 x 1,9 m  
78 ¾" x 74 ¾"  
Red  
Rojo  
ref: 62023

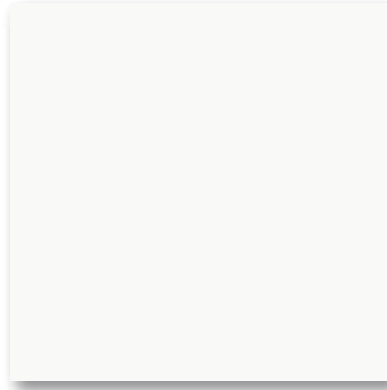


LISA by Studio VONDOM





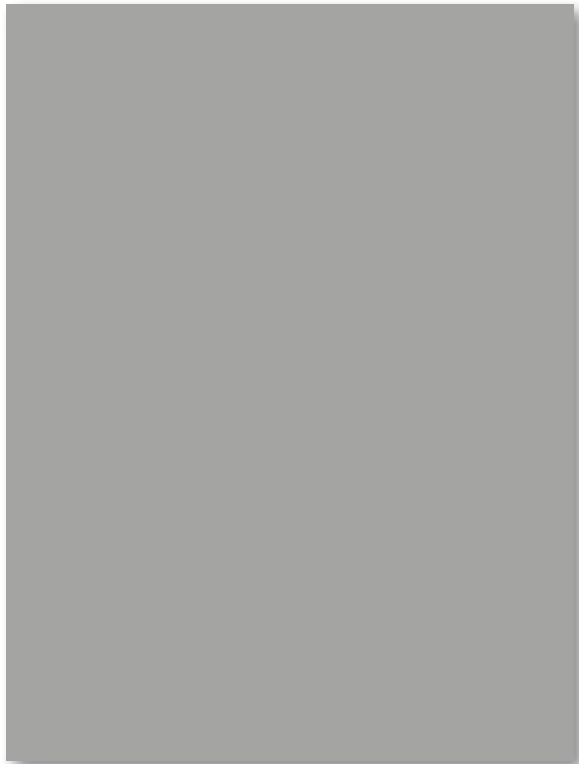
Lisa 2 x 2 m  
78 ¾" x 78 ¾"  
Grey  
Gris  
ref: 62018



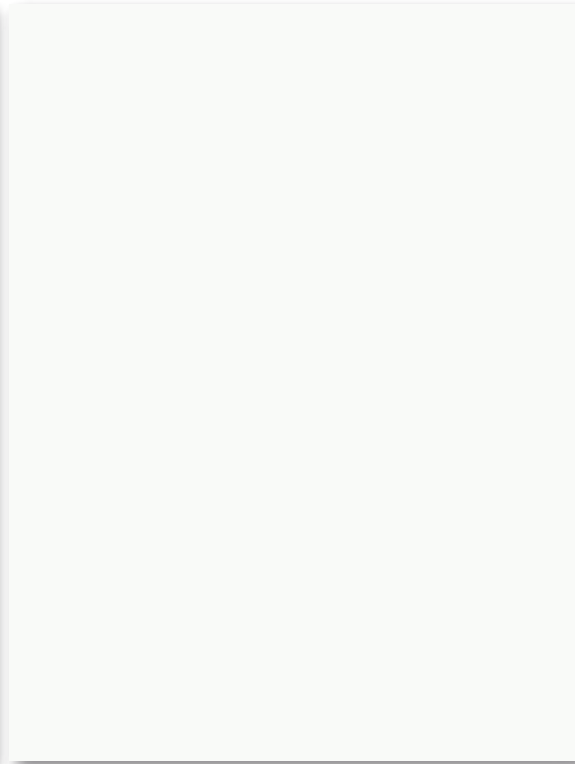
Lisa 2 x 2 m  
78 ¾" x 78 ¾"  
White  
Blanco  
ref: 62020



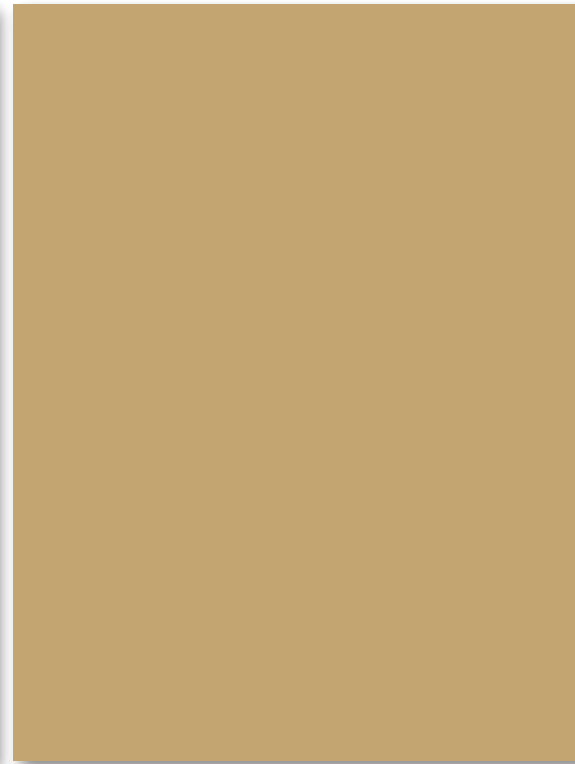
Lisa 2 x 2 m  
78 ¾" x 78 ¾"  
Gold  
Oro  
ref: 62016



Lisa 3 x 4 m  
118 ¼" x 157 ½"  
Grey  
Gris  
ref: 62017



Lisa 3 x 4 m  
118 ¼" x 157 ½"  
White  
Blanco  
ref: 62019



Lisa 3 x 4 m  
118 ¼" x 157 ½"  
Gold  
Oro  
ref: 62015



RECOMENDATIONS RECOMENDACIONES

MAINTANENCE & SAFETY

Our production is made according to the quality guide ISO 9001:2008 and of environment ISO 14001:2004, by using only materials of high quality to guarantee a long useful life of the products.

In order to provide a durable and safe use to the product, please follow the following recommendations:

- All our products are suitable for indoor and outdoor use.
- Highly resistant to UV rays
- It is not to heat sources, it may melt if the temperature rises more than 80°C.
- Any improper use may be harmful to itself.

CLEANING

The dirt must be eliminated by a short sprinkling or with a simple cleaning with a hose.

To avoid the squashing of the fibres, it should be brushed against the nap so that the fibres recover their vertical position.

- We hope you enjoy our products. If you need any further information, please do not hesitate to communicate with our CUSTOMER SERVICE department calling +34 96 239 84 86 or sending an e-mail to info@vondom.com.

MANTENIMIENTO Y SEGURIDAD

Nuestra producción se rige según las normas de nuestro sistema de aseguramiento de la calidad ISO 9001:2008 y de medio ambiente ISO 14001:2004. y solamente utilizamos materiales de altísima calidad para garantizar una larga vida útil a los productos.

Para proporcionarle un uso duradero y seguro al producto, por favor siga las siguientes instrucciones:

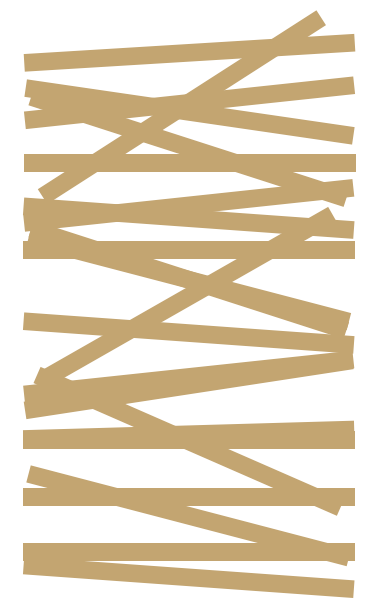
- Todos los productos son aptos tanto para interior como para exterior.
- Producto altamente resistente a los rayos UV.
- No acercar el producto a fuentes de calor, pudiendo llegar a derretirse si se superan los 80°C.
- Cualquier uso indebido puede ser perjudicial para el mismo.

LIMPIEZA

La suciedad que quede acumulada en la alfombra debe ser eliminada mediante una corta aspersion o con un simple mangerazo de agua.

Para evitar el aplastamiento de las fibras, se debe cepillar a contrapelo para que las fibras recuperen su posición vertical.

- Esperemos que disfrute de nuestros productos. Si desea más información no dude en comunicárselo a nuestro departamento de ATENCIÓN AL CLIENTE llamando al +34 96 239 84 86 o enviando un correo electrónico a info@vondom.com



INSTRUCTIONS & RECOMMENDATIONS INSTRUCCIONES Y RECOMENDACIONES



TECHNICAL FEATURES

Product designed by soft and resistant to UV rays Polyethylene fibers.

YARN

Type	Fibrillated
Composition	Polyethylene

TUFTING

Finishing	Cut Pile
-----------	----------

PRIMARY BACKING

Type	Reinforced Fleece
Composition	Polypropylene
Weight	165 gr/m <sup>2</sup>

FINISHING

Composition	Polyurethane drilled to not retain water and liquids.
-------------	---

FINAL PRODUCT

Total Height	18 mm (±5%)
--------------	-------------

CARACTERÍSTICAS TÉCNICAS

Productos diseñado a base de suaves fibras de Polietileno resistentes a los rayos UV.

FIBRA/HILO

Tipo	Fibrilado
Composición	Polietileno

TEJIDO

Acabado	Pelo cortado
---------	--------------

SOPORTE PRIMARIO

Tipo	Tejido Reforzado
Composición	Polipropileno
Peso	165 gr/m <sup>2</sup>

ACABADO

Composición	Poliuretano perforado para no retener agua ni líquidos.
-------------	---

PRODUCTO FINAL

Altura Total	18 mm (±5%)
--------------	-------------

RUG SECTION SECCIÓN ALFOMBRA



TECHNICAL  
FEATURES  
CARACTERÍSTICAS  
TÉCNICAS

Art Director	Ramón Esteve
Design	Studio Vondom
Photo	Eduardo Peris Mario Sierra Jonathan Segade

CAF\_0513

Special Edition ICFF New York & HD Las Vegas  
Edición Especial ICFF New York & HD Las Vegas

The possible differences can be due to the colours is the print technology.

VONDOM all rights related to trademarks, pictures and designs used in the collection are reserved.

All manufacturing distribution and/or trading activities in any media of the products present in the collections are prohibited. Specifically, and/or use out of the private use and with commercial purposes are reserved to the order of their owner.

VONDOM reserves the right to effect any changes or improvements, without notice.

All the information included in this catalogue regarding measurements and capacities are approximated.

© Copyright. 2013. Vondom, S.L.U.

All rights reserved to the order of VONDOM

Las posibles diferencias entre el color original y el color reproducido se deben a la técnica de impresión.

VONDOM se reserva el derecho exclusivo sobre todas las marcas, fotografías y diseños utilizados en sus colecciones, por lo que queda prohibida la fabricación, distribución y/o comercialización de los productos que los contienen, en cualquier medio o soporte.

En particular quedan reservados a favor de su titular los derechos de reproducción total o parcial, la transformación de los mismos y/o su utilización fuera de la esfera privada y con fines comerciales.

VONDOM se reserva el derecho de modificar total o parcialmente sin aviso previo cualquiera de los datos y especificaciones de esta publicación.

Toda la información que aparece en este catálogo referente a dimensiones y capacidades son aproximadas.

© Copyright. 2013. Vondom, S.L.U.

Todos los Derechos a beneficio de VONDOM



**VONDOM®**

Head Quarters:

VONDOM S.L.U  
Avda. Valencia - 46891 - El Palomar - Spain  
t. +34 96 239 84 85 - f. +34 96 290 05 01  
info@vondom.com - www.vondom.com

Branch USA:

VONDOM Inc  
208 English Road - High Point NC 27262  
Ph (336) 885 6670 - Fax (336) 855 62 12  
infousa@vondom.com - www.vondom.com

**VONDOM®**