

A woman with blonde hair, wearing a black sleeveless top, is sitting at a modern, light-colored outdoor table. She is resting her chin on her hand and looking towards the camera. The table has a unique, angular design. In the background, there are lush green palm trees and foliage, suggesting a tropical or outdoor setting. The word "VOINDOM" is overlaid in large, white, bold, sans-serif capital letters across the center of the image.

VOINDOM

HPL Solid Core

HPL Solid Core

Contract spaces are very important to Vondom, and we understand the needs of the HORECA sector. For this reason we have developed HPL Solid Core, a material that is easy to clean and maintain, lightweight and resistant to water, alcohol and organic solvents.

Qualities that perfect key pieces of our collections, the tables.



Manufacturing

This material has a complex manufacturing process from cellulose and large quantities of phenolic resins which results in a very hard, resistant, dense and light material.

Suitable for interiors and exteriors.



Features

High-pressure, high-temperature pressed boards.

Thickness	ISO 4586 ½	mm	13 ± 0,55	
Density	ISO 1183	Kg/m3	1400 - 1500	
Water absorption	ISO 4586 ½	%	Weight	2,0 max.
			Thickness	2,0 max.
Dimensional stability at high temperatures	ISO 4586 ½	%	Long.	0,25 max.
			Trans.	0,55 max.
Hardness	ASTM D 785	HR E	97 ca	
Flexural Strength	ISO 178	MPa	Long.	145 min
		MPa	Trans	135 min



Finishes



White 7000
Solid Core
(10 & 12mm)



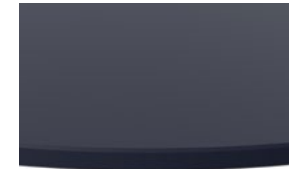
Castoro Fiber 7006
Solid Core
(10mm)



Traffic Gray 7008
Solid Core
(10mm)



Modo Green 7003
Solid Core
(10mm)



Notte Blue 7001
Solid Core
(10mm)



Crema 7007
Solid Core
(10mm)



Piombo Gray 7005
Solid Core
(10mm)



British Gray 7009
Solid Core
(10mm)



Cacao 7004
Solid Core
(10mm)



Purjai Red 7002
Solid Core
(10mm)



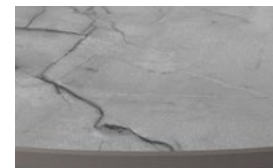
Marmo Canova 7101
Solid Core
(10mm)



Yule Brown 7105
Solid Core
(10mm)



Pulpis Gray 7104
Solid Core
(10mm)



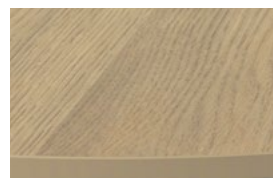
Yule Gray 7102
Solid Core
(10mm)



Kandia Black 7103
Solid Core
(10mm)



Oak 1 7301
Solid Core
(10mm)



Oak 2 7302
Solid Core
(10mm)



Black 7203
Black-edge
(10 & 12mm)



White 7201
Black-edge
(10 & 12mm)



Ecru 7202
Black-edge
(10 & 12mm)

Cleaning and care

Our production is governed by the standards of our quality assurance system ISO 9001:2008 and environmental system ISO 14001:2004. And we use only the highest quality materials to guarantee a long product life.

Steps to clean an HPL surface:

1. Wipe the entire surface with a damp cloth.
2. Lather with neutral soap.
3. Dry the area to remove moisture and soap residue.

For a better conservation of the furniture, it is advisable to cover each item.

VONDOM

info@vondom.com

+34 962 39 84 86

vondom.com

