

A woman with blonde hair in a bun, wearing a dark top, is sitting on a white lounge chair in the ocean. She is surrounded by several other white lounge chairs. The scene is set on a rocky shore with waves crashing against the rocks. The sky is overcast and grey.

VONDOM

Outdoor Rugs

Outdoor rug, by Studio Vondom

At Vondom, we continue to innovate and develop new techniques to come up with new and cutting-edge products. The result of these efforts is brought to life in outdoor rugs made from recycled plastic. These rugs are made for the outdoors; as they have UV treatment incorporated, they resist water and high temperatures, and they are also easy to clean and maintain. They are the perfect decorative complement; adding a warm and cosy touch to wherever you place them.





Outdoor rugs made from recycled plastic

The new rugs come in a wide range of neutral shades and vibrant tones that blend perfectly with Vondom furniture finishes. Once again, the use of plastic fibres recovered from the oceans is part of our journey towards a more sustainable future. This time, we've used more than 130 plastic bottles for every square metre of rug. This is our grain of sand to help the marine ecosystem and the environment.



Soft and fresh for outdoors

The new rugs are soft and fresh, as well as other very pleasant sensations to the touch that you'll also enjoy when sitting on ergonomic upholstery that will transport you to a place where wellbeing prevails.

These rugs are made for the outdoors; as they have UV treatment incorporated, they resist water and high temperatures, and they are also easy to clean and maintain.

They are the perfect decorative complement; adding a warm and cosy touch to wherever you place them.





Social welfare

From our philosophy, under the name of Vondom Revolution, we are working for our creations, and all that around us, do not compromise the capacity of the future generations, and allow a balance between the economic growth, the environment and social welfare.

That's why sustainability is the key to the materials and complements choice. Our fabrics and rugs now contain recycled plastic fibers that contribute for a more sustainable future. This time, we've used more than 130 plastic bottles for every square metre of rug. This is our grain of sand to help the marine ecosystem and the environment.



Stain-resistant treatment

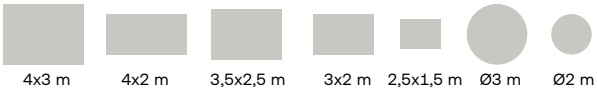
At Vondom we offer rugs with extraordinary levels of performance, durability, and design. Tailored and approved to withstand the toughest outdoor conditions.

Stain-resistant treatment, waterproofing, resistance to UV rays, cold cracking, and mould spores, ensure that our furniture can be used in all outdoor spaces and areas with high levels of humidity and chlorine, such as spas and indoor swimming pools.

The engineered recycled material offers superior durability, making it well-suited to commercial and residential use.



Eras



Finishes

Rug Type 1 / Color
Eras 61001



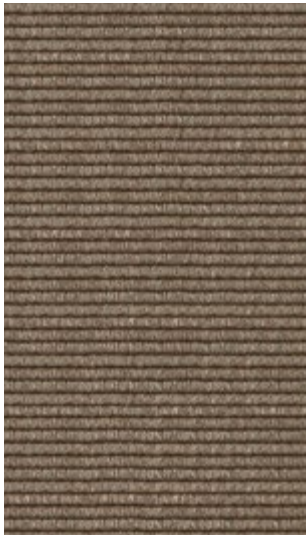
Rug Type 1 / Color
Eras 61002



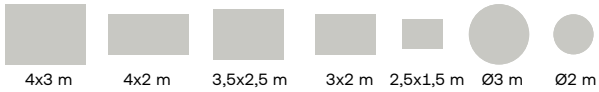
Rug Type 1 / Color
Eras 61003



Rug Type 1 / Color
Eras 61004



Lares

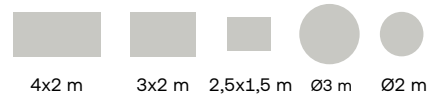


Finishes

Rug Type 1 / Color
Lares 61201 Rug Type 1 / Color
Lares 61202 Rug Type 1 / Color
Lares 61203 Rug Type 1 / Color
Lares 61204



Pleita



Finishes

Rug Type 2 / Color
Pleita 61101



Rug Type 2 / Color
Pleita 61102



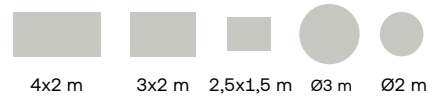
Rug Type 2 / Color
Pleita 61103



Rug Type 2 / Color
Pleita 61104



Pleita

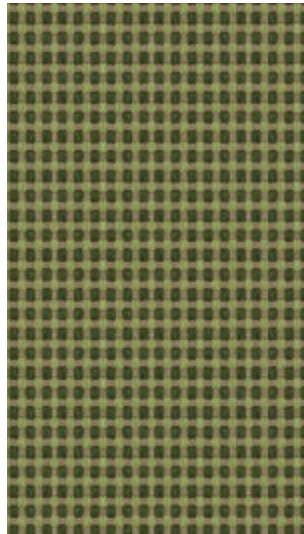


Finishes

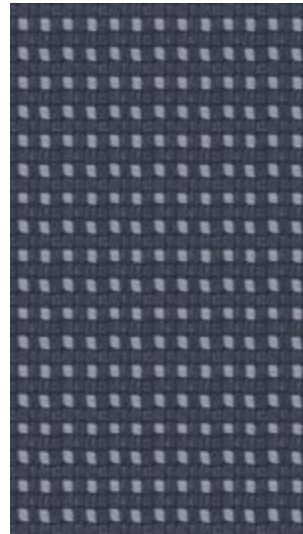
Rug Type 2 / Color
Pleita 61105



Rug Type 2 / Color
Pleita 61106



Rug Type 2 / Color
Pleita 61107















Rug Type 2 / Color
Pleita 61108



Cleaning and care

Rugs: Features

Fabric Tejido	Weight Peso	Flame Resistance Resist. Ignifuga	Use Uso	Color Fastness Solidez Del Color	Composition Composición	Maintenance Mantenimiento	Symbols Símbolos
Eras.	±2.600 gr/m ²	DFIs1	Indoor and Outdoor	>6 (UV outdoor) 4 - ISO 105B04	100% Recycled PET	Clean with a cotton cloth with a solution of neutral soap or stain remover and water. Rub with a clean cloth or small soft bristle brush and allow to dry.	   
Lares.	±2.400 gr/m ²	DFIs1	Indoor and Outdoor	>6 (UV outdoor) 4 - ISO 105B04	100% Recycled PET	Clean with a cotton cloth with a solution of neutral soap or stain remover and water. Rub with a clean cloth or small soft bristle brush and allow to dry.	   
Pleita.	±4.200 gr/m ²	DFIs1	Indoor and Outdoor	>6 (UV outdoor) 4 - ISO 105B04	100% Recycled PET	Clean with a cotton cloth with a solution of neutral soap or stain remover and water. Rub with a clean cloth or small soft bristle brush and allow to dry.	   

Colour, pattern and textural batch matching: Slight differences will exist between different production batches and dyelots. Where a precise match is required, we recommend a stock cutting from the current material batch is requested before order placement.

Maintenance: Frequent vacuuming is a very effective and essential method of reducing the presence and accumulation of loose soil/dirt particles in the carpet.

Cleaning: Our carpets are very easy to maintain and clean without the need for specialised cleaning products, even allowing the use of bleach dilutions for more stubborn stains.

Seaming and Joins in Flatweave Structures: The cutting and seaming together of a flatweave is a precise and time consuming process with the resulting join likely to be variable in appearance.

The durability of seams cannot be guaranteed in multi-width installations. For this reason we do not recommend either side to side or end to end joins in our flatweave structures.

Installation on Stairs: The stair nosing is a point of high friction and stair carpets must be installed in conjunction with a high quality heavy use underlay that covers the tread, nosing and riser.

VONDOM

info@vondom.com

+34 962 39 84 86

vondom.com