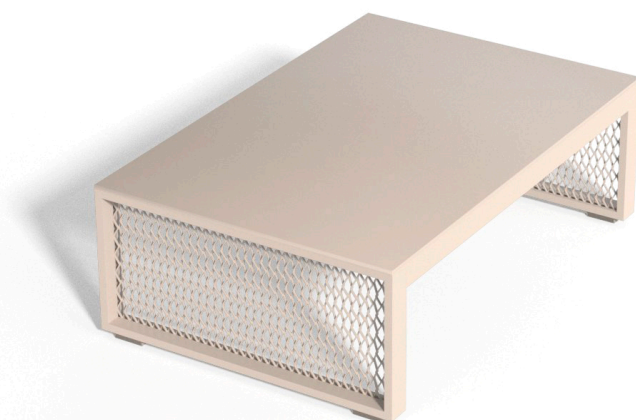


The factory coffee table 120x80x40

by Ramón Esteve

Vondom's The Factory collection, designed by Ramón Esteve, is inspired by the cast-iron architecture of New York. This collection combines an industrial aesthetic with modern comfort, offering a selection of furniture that brings character and sophistication to any outdoor space.

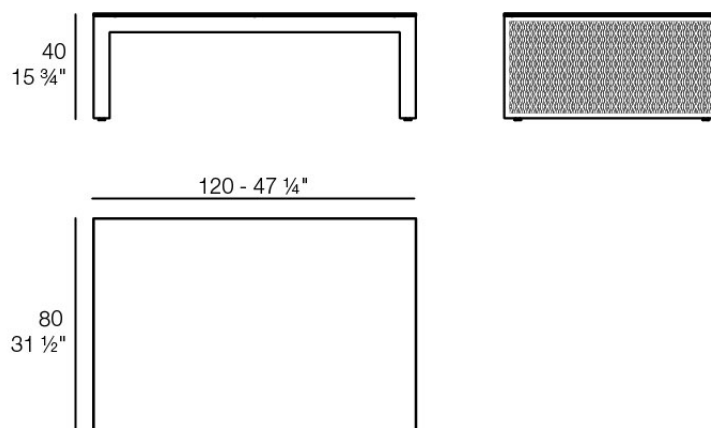


Info

Description

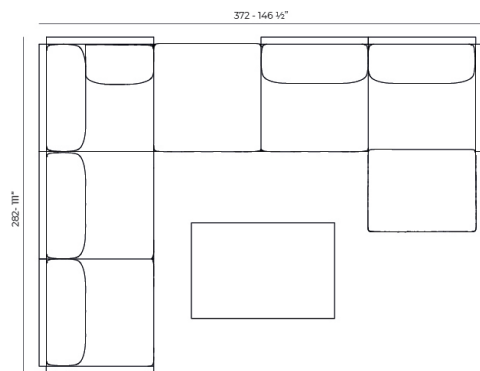
Composing of an aluminum profile and deployed mesh, all materials and components are resistant to extreme weather conditions. Available in different finishes.

Weight: 11.26 Kg

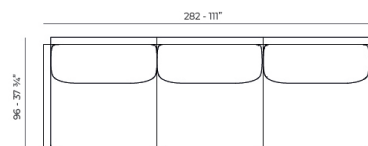


THE FACTORY Mesa Baja 120x80
THE FACTORY Low Table 47¼x 31½

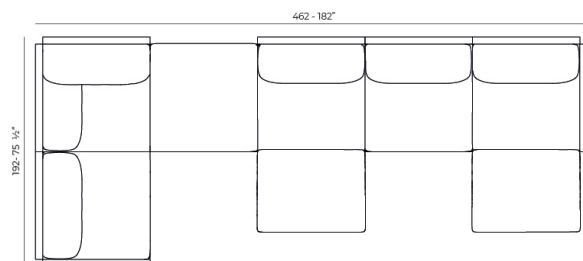
Combinations



- 1 x 54601 Sofá Brazo Derecho - Sectional Sofa Right
- 1 x 54608 Sofá Chaiselongue Izquierdo - Sectional Chaiselongue Left
- 2 x 54605 Sofá Módulo Central - Sectional Armless
- 1 x 54606 Sofá Puff M - Sectional Puff M
- 1 x 54603 Sofá Esquina Derecha - Sectional Right Corner



- 1 x 54601 Sofá Brazo Derecho - Sectional Sofa Right
- 1 x 54602 Sofá Brazo Izquierdo - Sectional Sofa Left
- 1 x 54605 Sofá Módulo Central - Sectional Armless



- 1 x 54601 Sofá Brazo Derecho - Sectional Sofa Right
- 1 x 54608 Sofá Chaiselongue Izquierdo - Sectional Chaiselongue Left
- 1 x 54605 Sofá Módulo Central - Sectional Armless
- 1 x 54606 Sofá Puff M - Sectional Puff M
- 1 x 54604 Sofá Esquina Izquierda - Sectional Left Corner
- 1 x 54609 Sofá Chaiselongue Central - Sectional Armless Chaiselongue

Finishes

finishes

ALUMINIUM

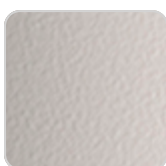
Ref. 54616



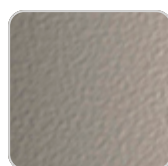
white



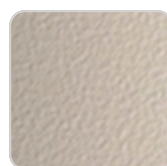
smoked



ecru



tortora



cream



garnet



brown



green



blue



gray



anthracite



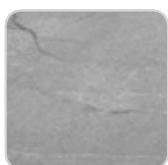
black

Lacquered aluminium profile.

tabletops

Solid Core

Ref. 54616TBL



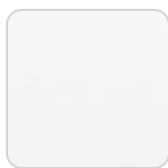
VONDOM

gray stone



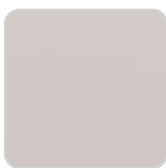
black stone

white stone



white (white edge)

smoked



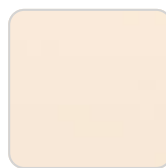
ecru

ecru stone



tortora

tortora stone



cream



garnet



brown



green



blue



anthracite

Ambients

