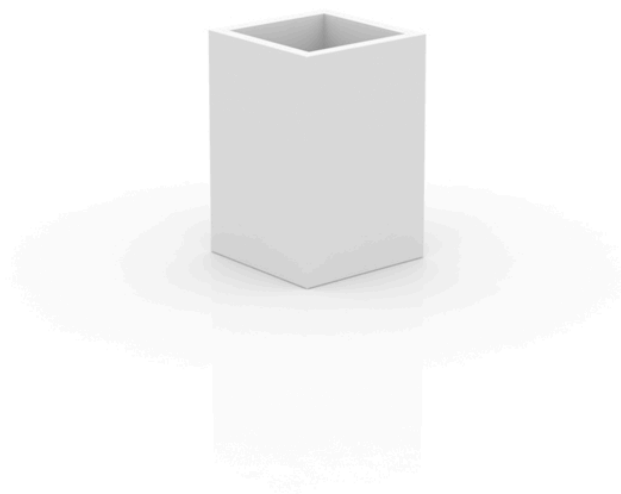


Cubo alto 40x40x60

La más amplia colección de macetas de interior y exterior diseñada por Studio Vondom. Diseños atemporales y minimalistas que permiten crear ambientes únicos y originales para hogares, restaurantes y cualquier espacio.

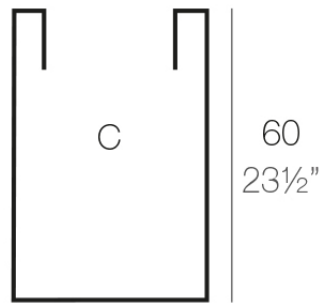


Info

Descripción

Macetero fabricado con resina de polietileno mediante moldeo rotacional con doble pared. 100% Reciclable. Apto para exterior e interior. Disponible en varios acabados.

Peso: 5.7 Kg



40x40 - 15¾"x15¾"

CUBO ALTO 40 x 60 cm C = 94 L (1 x 60 cm)
HIGH CONE 15¾" X 23½" C = 25 gal (1 1/2 x 23 1/2")

Acabados

acabados

Simple

Ref. 41440



white 2001



black 2002



ecru 2003



tortora 2004



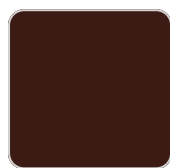
gray 2005



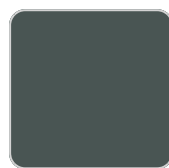
anthracite 2006



brown 2008



garnet 2015



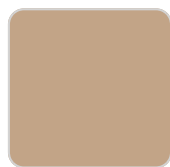
green 2016



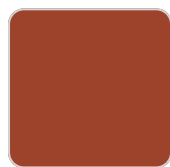
cream 2017



blue 2018



camel 2020



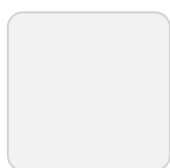
clay 2022



ecru granite



cream granite



ice 2101

Macetero acabado mate de una sola pared

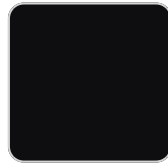
Simple Lacquered

Ref. 41440F

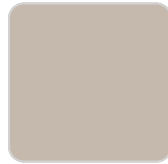
VONDOM



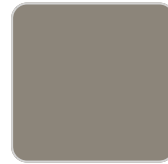
white 3101



black 3102



ecru 3103



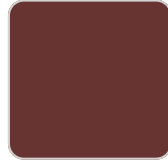
tortora 3104



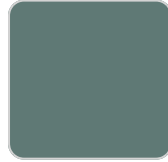
gray 3105



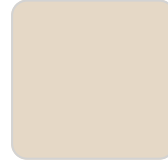
anthracite 3106



garnet 3113



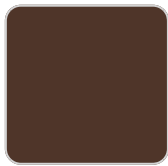
green 3116



cream 3117



blue 3118



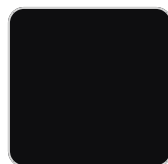
brown 3125

plato

Ref. 42949



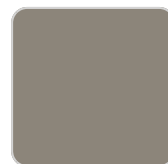
white 2001



black 2002



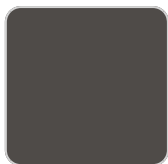
ecru 2003



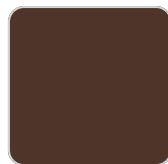
tortora 2004



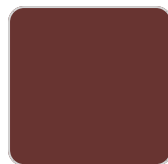
gray 2005



anthracite 2006



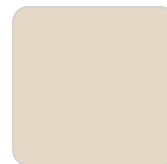
brown 2008



garnet 2015



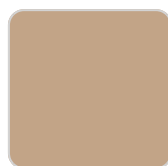
green 2016



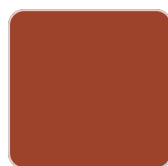
cream 2017



blue 2018



camel 2020



clay 2022



ecru granite



cream granite



ice 2101

