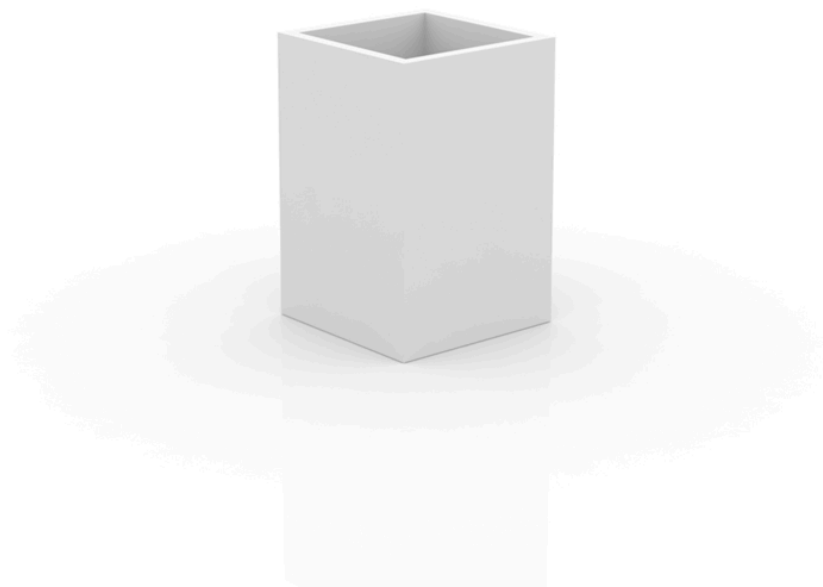


## Cubo alto 50x50x75

La más amplia colección de macetas de interior y exterior diseñada por Studio Vondom. Diseños atemporales y minimalistas que permiten crear ambientes únicos y originales para hogares, restaurantes y cualquier espacio.



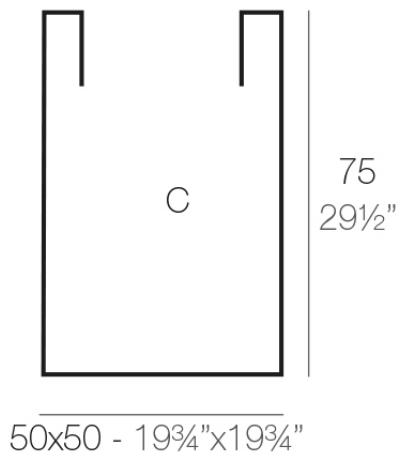
## Info

---

### Descripción

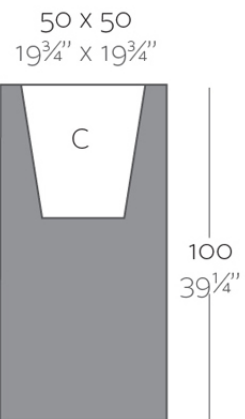
Macetero fabricado con resina de polietileno mediante moldeo rotacional con doble pared. 100% Reciclable. Apto para exterior e interior. Disponible en varios acabados.

Peso: 9.7 Kg



CUBO ALTO 50 x 75 cm  
HIGH CONE 19¾" X 29½"

C = 184 L 75 cm  
C = 48½ gal 19¾" X 29½"



High Cube 100  
Cubo Alto 100

## Acabados

---

### acabados

---

Simple

Ref. 41450



white 2001



black 2002



ecru 2003



tortora 2004



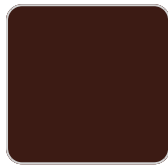
gray 2005



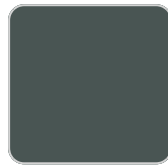
anthracite 2006



brown 2008



garnet 2015



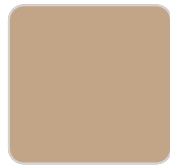
green 2016



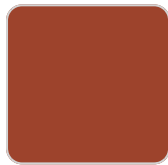
cream 2017



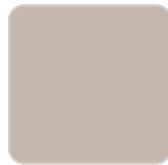
blue 2018



camel 2020



clay 2022



ecru granite



cream granite



ice 2101

Macetero acabado mate de una sola pared

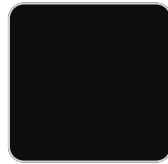
Simple Lacquered

Ref. 41450F

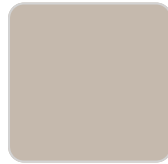
# VONDOM



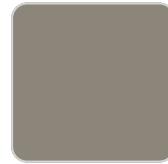
white 3101



black 3102



ecru 3103



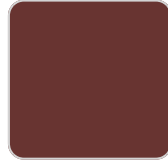
tortora 3104



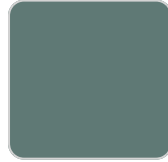
gray 3105



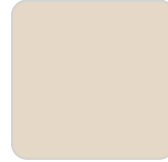
anthracite 3106



garnet 3113



green 3116



cream 3117



blue 3118



brown 3125

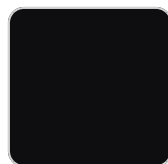
## plato

---

Ref. 42960



white 2001



black 2002



ecru 2003



tortora 2004



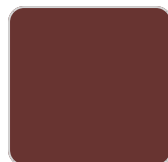
gray 2005



anthracite 2006



brown 2008



garnet 2015



green 2016



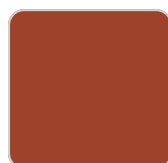
cream 2017



blue 2018



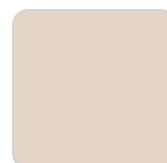
camel 2020



clay 2022



ecru granite



cream granite



ice 2101

