

Quartz mesa ø59cm

por Ramón Esteve

Creada por Ramón Esteve para Vondom, ofrece una mezcla perfecta de elegancia y funcionalidad en muebles para exteriores. Con una geometría ortogonal y perfiles triangulares, esta colección se destaca por su ligereza visual y su diseño intemporal.

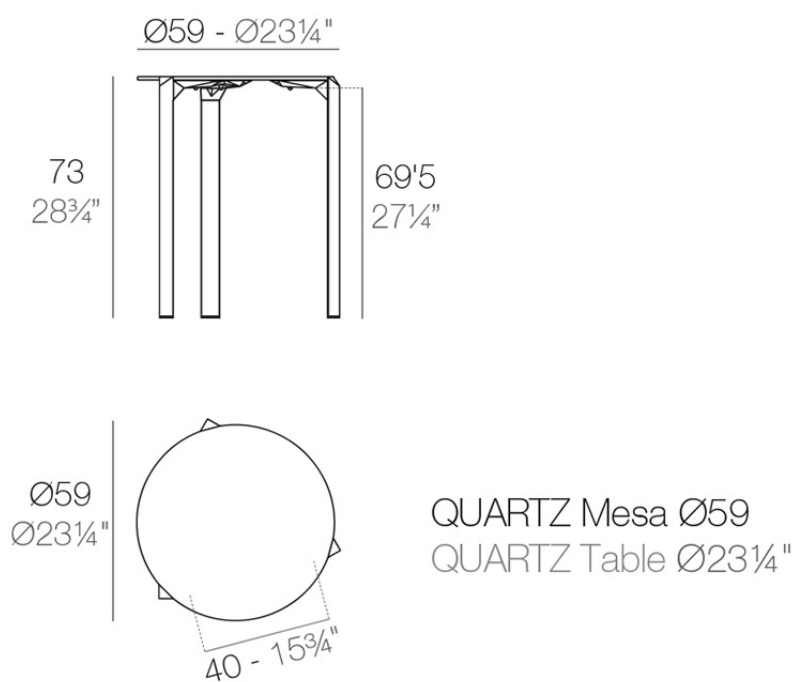


Info

Descripción

Fabricado en polipropileno por inyección y reforzado con fibra de vidrio para las patas. Tablero HPL. Disponible en tres colores. Apto para uso interior y exterior.

Peso: 5.1 Kg



Acabados

tableros

HPL Black Edge Top

Ref. 54198



white



black



ecru

HPL black edge

HPL Solid Core Top

Ref. 54198B



white



black



ecru

HPL solid core

tableros

Ref. VVAR02348

VONDOM



green stone



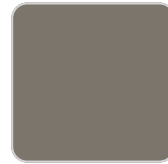
ecru stone



walnut



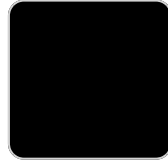
tortora stone



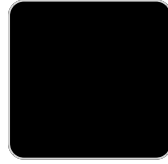
smoked



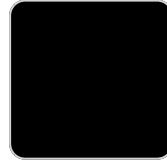
black stone



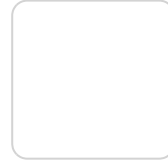
gray stone



white stone



cream stone



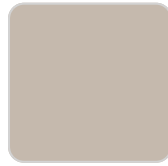
white (white edge)



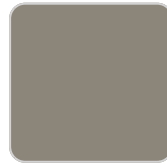
oak1



oak2



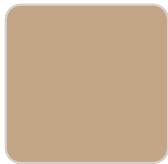
ecru



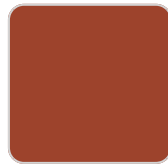
tortora



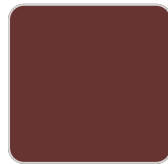
cream



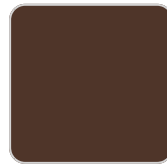
camel



clay



garnet



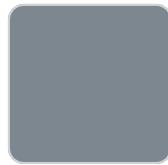
brown



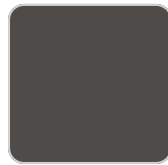
green



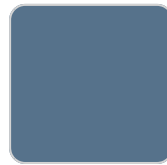
blue



gray



anthracite



ocean

HPL Black Edge Top

Ref. VVAR02348



white(black edge)



ecru(black edge)



black(black edge)

Ambients

