

## Quartz mesa ø69cm

por Ramón Esteve

Creada por Ramón Esteve para Vondom, ofrece una mezcla perfecta de elegancia y funcionalidad en muebles para exteriores. Con una geometría ortogonal y perfiles triangulares, esta colección se destaca por su ligereza visual y su diseño intemporal.



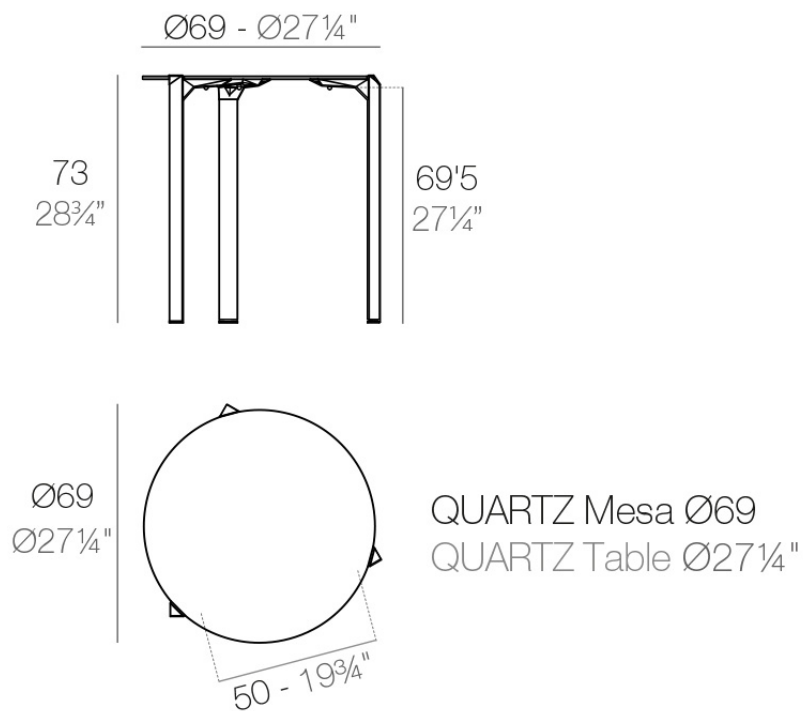
## Info

---

### Descripción

Fabricado en polipropileno por inyección y reforzado con fibra de vidrio para las patas. Tablero HPL. Disponible en tres colores. Apto para uso interior y exterior.

Peso: 6.53 Kg



## Acabados

---

### tableros

---

HPL Black Edge Top

Ref. 54199



white



black



ecru

HPL black edge

HPL Solid Core Top

Ref. 54199B



white



black



ecru

HPL solid core

### tableros

---

Ref. VVAR02349

# VONDOM



white stone



cream stone



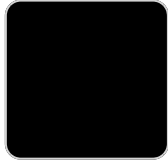
green stone



walnut



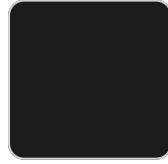
ecru stone



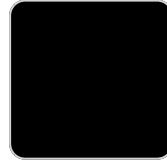
tortora stone



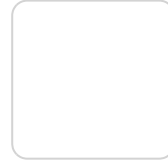
smoked



black stone



gray stone



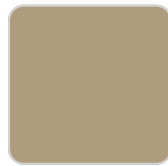
white (white edge)



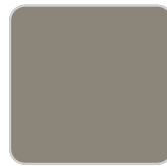
oak1



ecru



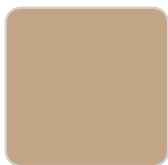
oak2



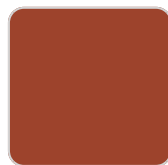
tortora



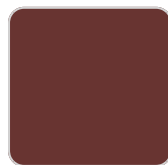
cream



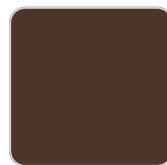
camel



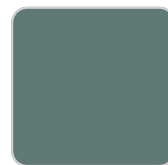
clay



garnet



brown



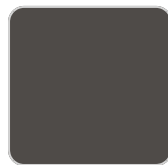
green



blue



gray



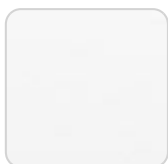
anthracite



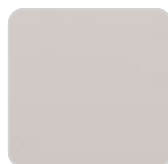
ocean

## HPL Black Edge Top

Ref. VVAR02349



white(black edge)



ecru(black edge)



black(black edge)

## HPL Solid Core Top

Ref. VVAR02349

# VONDOM



white (white edge)

