

Quartz mesa ø90cm

por Ramón Esteve

Creada por Ramón Esteve para Vondom, ofrece una mezcla perfecta de elegancia y funcionalidad en muebles para exteriores. Con una geometría ortogonal y perfiles triangulares, esta colección se destaca por su ligereza visual y su diseño intemporal.

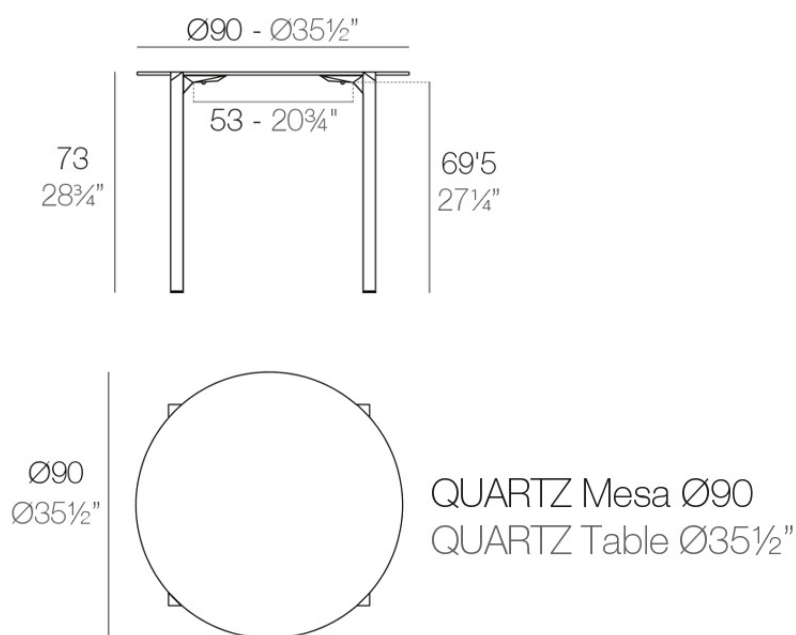


Info

Descripción

Fabricado en polipropileno por inyección y reforzado con fibra de vidrio para las patas. Tablero HPL. Disponible en tres colores. Apto para uso interior y exterior.

Peso: 10.8 Kg



Acabados

tableros

HPL Black Edge Top

Ref. 54201



white



black



ecru

HPL black edge

HPL Solid Core Top

Ref. 54201B



white



black



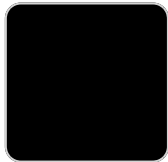
ecru

HPL solid core

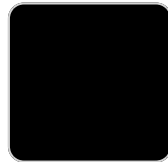
tableros

Ref. VVAR02351

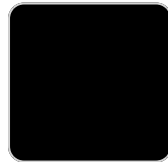
VONDOM



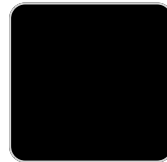
white stone



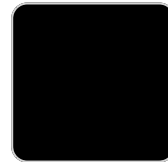
cream stone



green stone



walnut



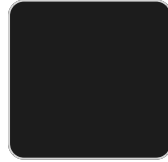
ecru stone



tortora stone



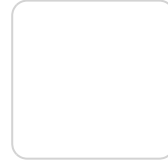
smoked



black stone



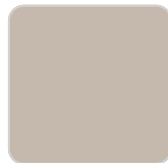
gray stone



white (white edge)



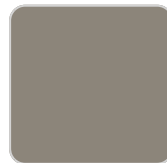
oak1



ecru



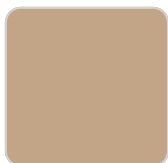
oak2



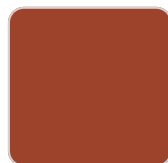
tortora



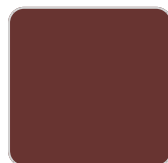
cream



camel



clay



garnet



brown



green



blue



gray



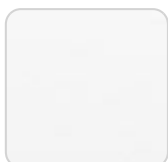
anthracite



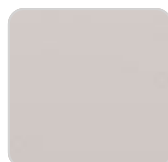
ocean

HPL Black Edge Top

Ref. VVAR02351



white(black edge)



ecru(black edge)



black(black edge)

Ambients

