

Quartz mesa 59x59cm

por Ramón Esteve

Creada por Ramón Esteve para Vondom, ofrece una mezcla perfecta de elegancia y funcionalidad en muebles para exteriores. Con una geometría ortogonal y perfiles triangulares, esta colección se destaca por su ligereza visual y su diseño intemporal.

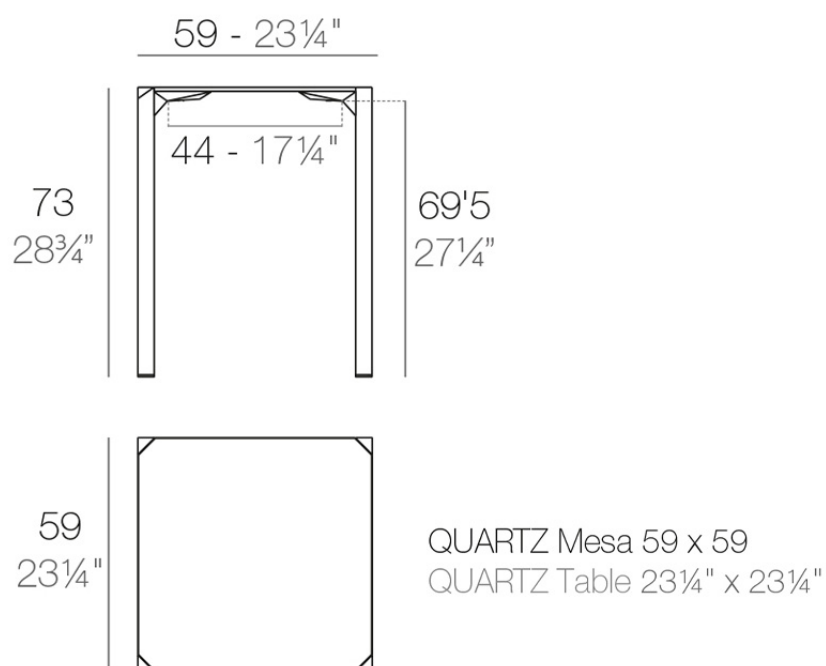


Info

Descripción

Fabricado en polipropileno por inyección y reforzado con fibra de vidrio para las patas. Tablero HPL. Disponible en tres colores. Apto para uso interior y exterior.

Peso: 0.78 Kg



Acabados

tableros

HPL Black Edge Top

Ref. 54203



white



black



ecru

HPL black edge

HPL Solid Core Top

Ref. 54203B



white



black



ecru

HPL solid core

tableros

Ref. VVAR02391

VONDOM



white stone



cream stone



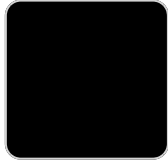
green stone



ecru stone



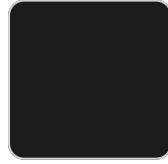
walnut



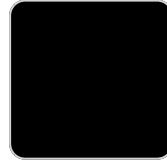
tortora stone



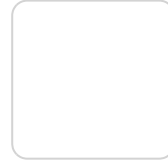
smoked



black stone



gray stone



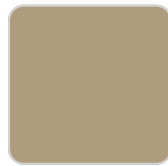
white (white edge)



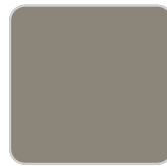
oak1



ecru



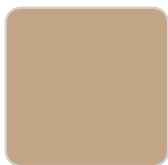
oak2



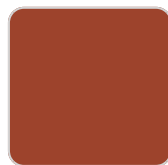
tortora



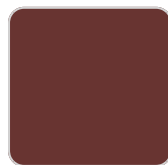
cream



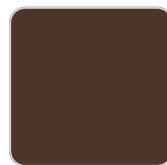
camel



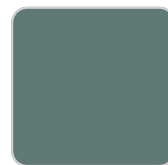
clay



garnet



brown



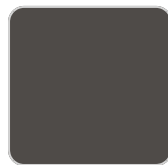
green



blue



gray



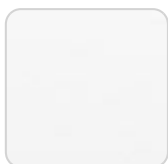
anthracite



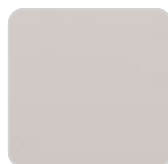
ocean

HPL Black Edge Top

Ref. VVAR02391



white(black edge)



ecru(black edge)



black(black edge)

