

## Quartz mesa 69x69cm

por Ramón Esteve

Creada por Ramón Esteve para Vondom, ofrece una mezcla perfecta de elegancia y funcionalidad en muebles para exteriores. Con una geometría ortogonal y perfiles triangulares, esta colección se destaca por su ligereza visual y su diseño intemporal.



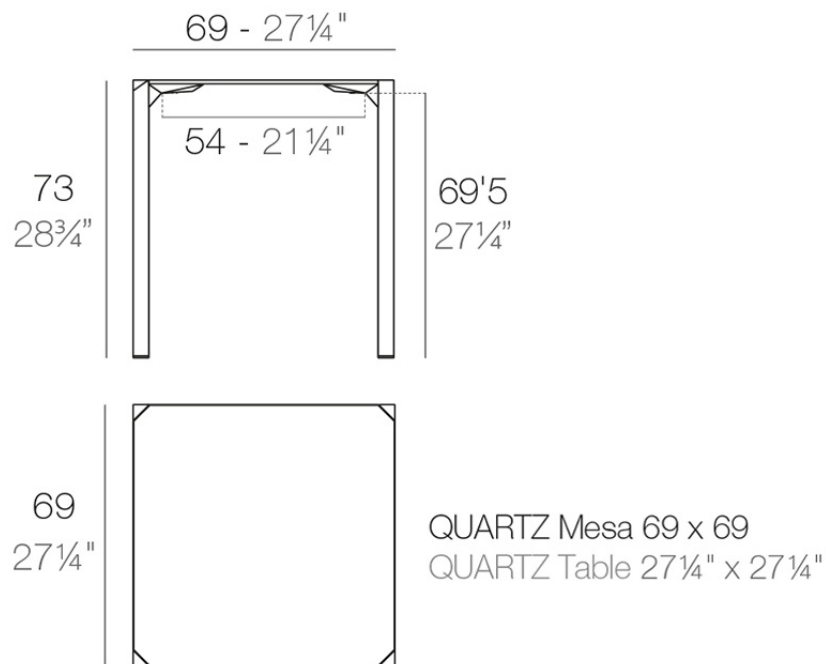
## Info

---

### Descripción

Fabricado en polipropileno por inyección y reforzado con fibra de vidrio para las patas. Tablero HPL. Disponible en tres colores. Apto para uso interior y exterior.

Peso: 8.51 Kg



## Acabados

---

### tableros

---

HPL Black Edge Top

Ref. 54204



white



black



ecru

HPL black edge

HPL Solid Core Top

Ref. 54204B



white



black



ecru

HPL solid core

### tableros

---

Ref. VVAR02392

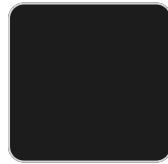
# VONDOM



smoked



tortora stone



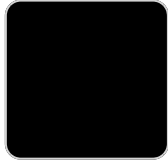
black stone



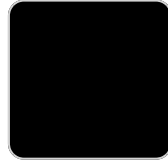
gray stone



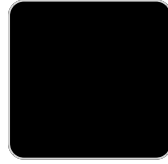
white stone



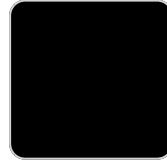
cream stone



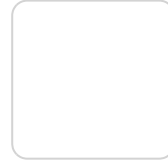
green stone



walnut



ecru stone



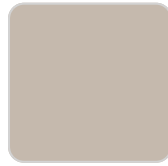
white (white edge)



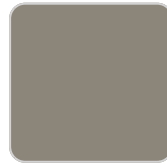
oak1



oak2



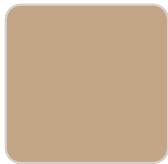
ecru



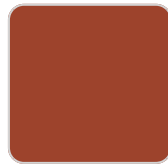
tortora



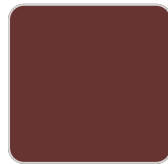
cream



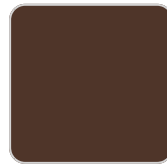
camel



clay



garnet



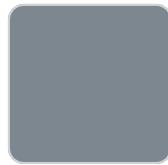
brown



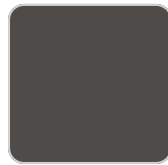
green



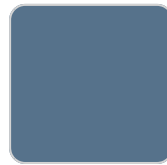
blue



gray



anthracite



ocean

## HPL Black Edge Top

Ref. VVAR02392



white(black edge)



ecru(black edge)



black(black edge)

