

Tablet mesa 105x35x42cm

por Ramón Esteve

El sofá de exterior de la colección Tablet, diseñado por Ramon Esteve para Vondom, busca **relacionar las nuevas tecnologías y su flexibilidad** a la versatilidad de la composición modular creando un programa de sofás basado en la dualidad identidad e integración. La personalidad de la pieza convive con el espacio y a su vez se adapta al estilo del mismo.

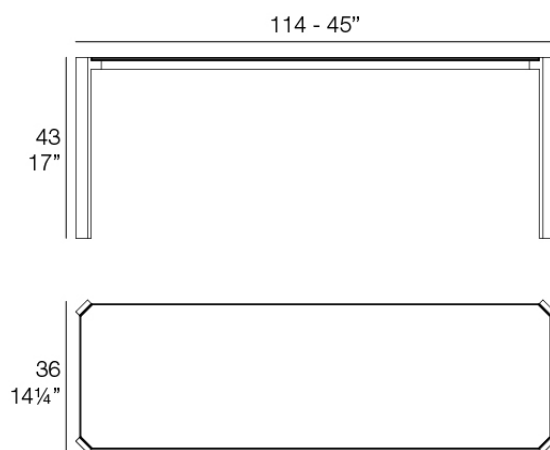


Info

Descripción

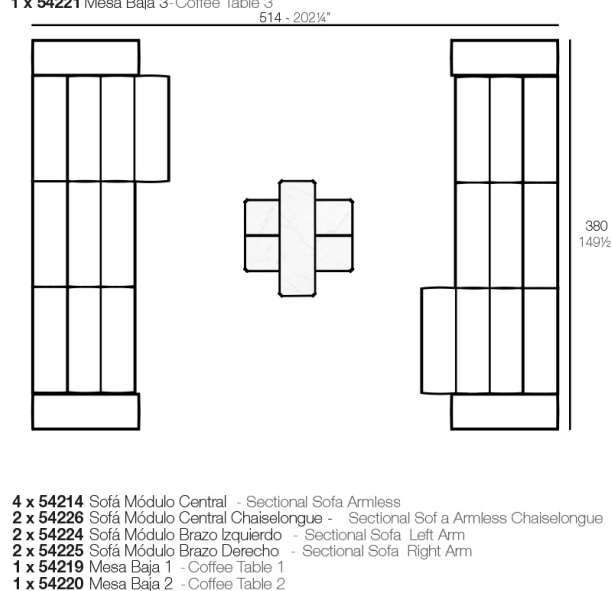
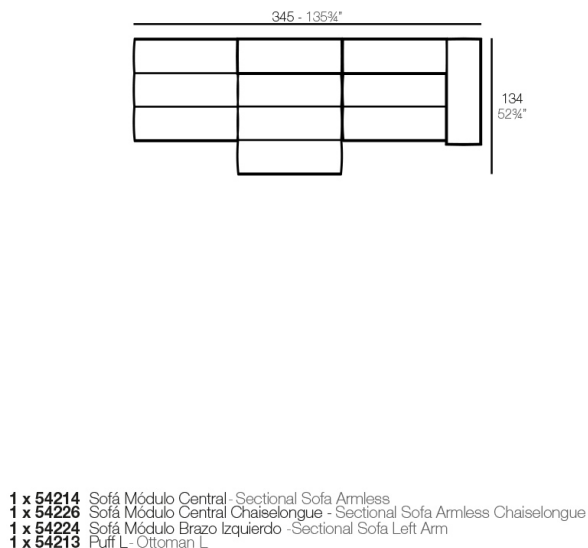
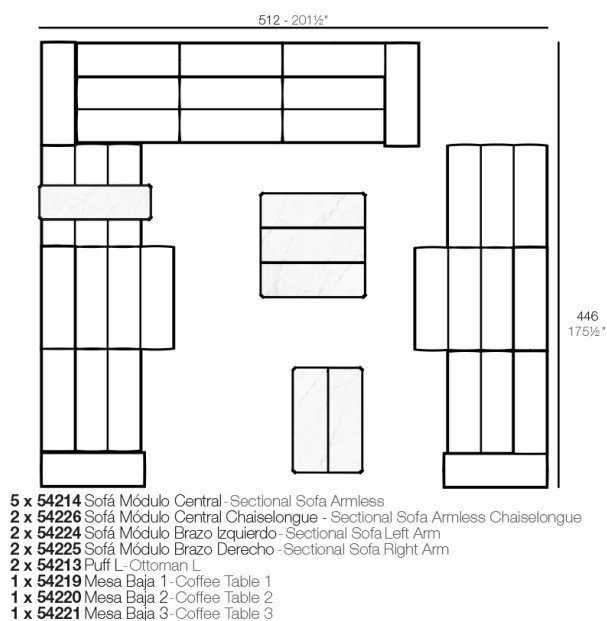
Aluminio extrusionado con base de fundición de aluminio lacado.

Peso: 14.77 Kg



TABLET Mesa Baja 1
TABLET Low Table 1

Combinaciones



Acabados

acabados

HPL Black Edge

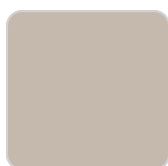
Ref. 54219



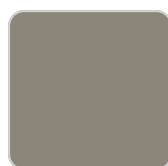
white



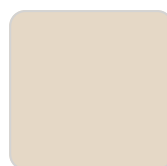
smoked



ecru



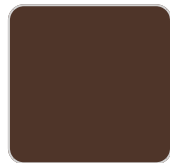
tortora



cream



garnet



brown



green



blue



gray



anthracite



black

Perfil de aluminio en acabado lacado.

HPL Solid Core

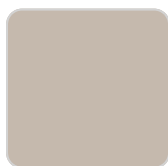
Ref. 54219B



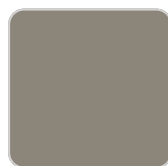
white



smoked



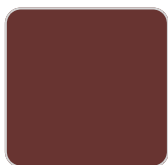
ecru



tortora



cream



garnet



brown



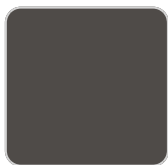
green



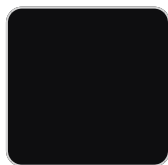
blue



gray



anthracite



black

Perfil de aluminio en acabado lacado.

tableros

Aluminium

Ref. VVAR02884



smoked



ecru



tortora



cream



garnet



brown



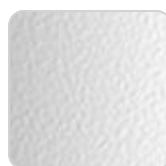
green



blue



anthracite

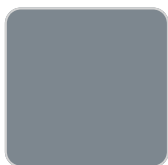


white



black

Ref. VVAR02884



gray

HPL Black Edge Ref. VVAR03089



white(black edge)



ecru(black edge)



black(black edge)

HPL Solid Core Ref. VVAR03090



smoked



ecru stone



tortora stone



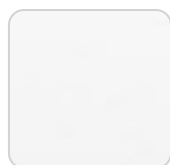
black stone



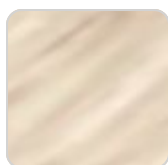
gray stone



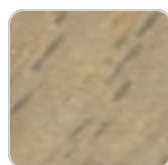
white stone



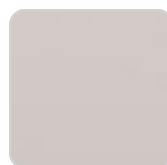
white (white edge)



oak1



oak2



ecru



tortora



cream



garnet



brown



green



VONDOM

blue

anthracite

Ambients

