

Tablet mesa 105x70x40cm

por Ramón Esteve

El sofá de exterior de la colección Tablet, diseñado por Ramon Esteve para Vondom, busca **relacionar las nuevas tecnologías y su flexibilidad** a la versatilidad de la composición modular creando un programa de sofás basado en la dualidad identidad e integración. La personalidad de la pieza convive con el espacio y a su vez se adapta al estilo del mismo.

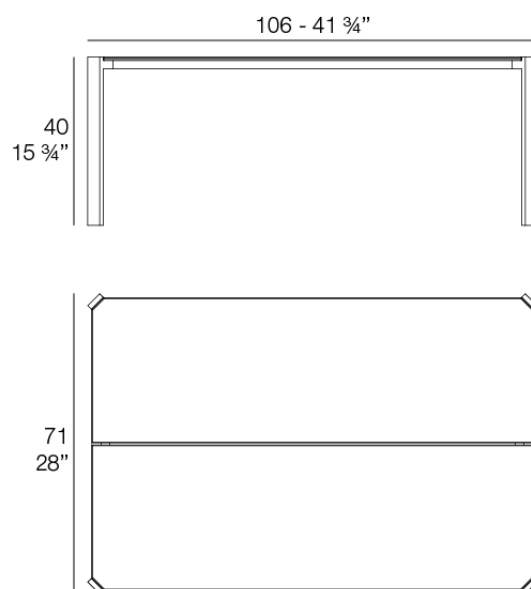


Info

Descripción

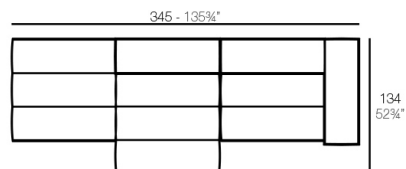
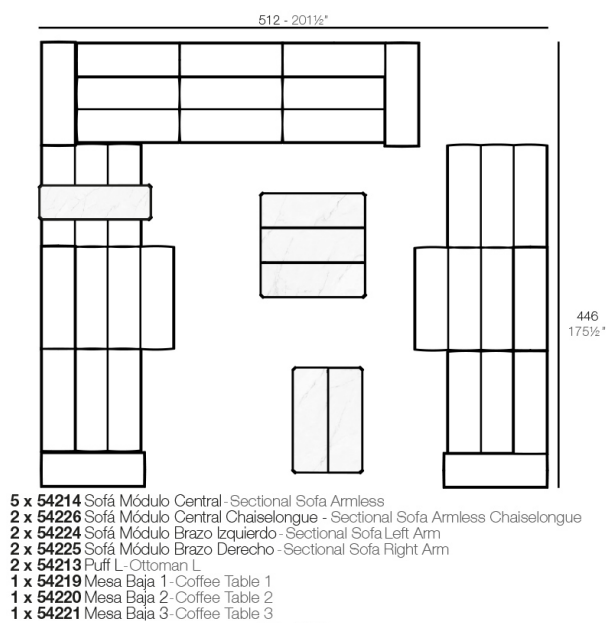
Aluminio extrusionado con base de fundición de aluminio lacado.

Peso: 21.5 Kg

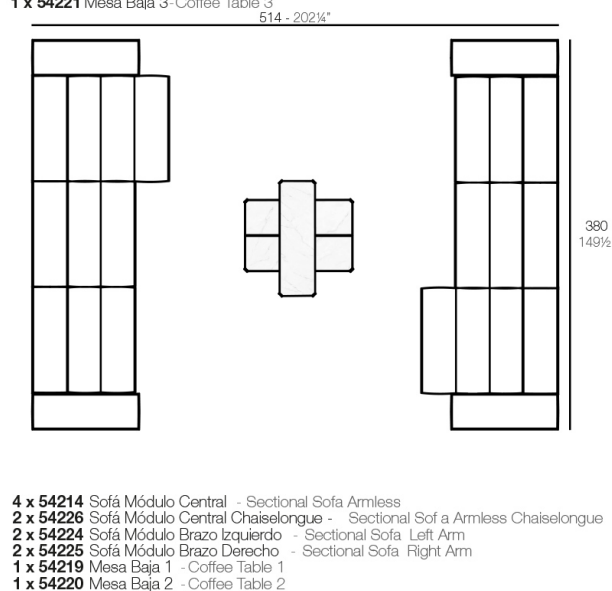


TABLET Mesa Baja 2
TABLET Low Table 2

Combinaciones



- 1 x 54214 Sofá Módulo Central - Sectional Sofa Armless
 1 x 54226 Sofá Módulo Central Chaiselongue - Sectional Sofa Armless Chaiselongue
 1 x 54224 Sofá Módulo Brazo Izquierdo - Sectional Sofa Left Arm
 1 x 54213 Puff L - Ottoman L



Acabados

acabados

HPL Black Edge

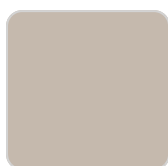
Ref. 54220



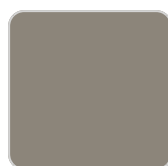
white



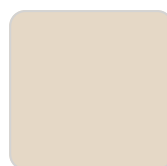
smoked



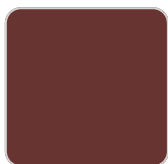
ecru



tortora



cream



garnet



brown



green



blue



gray



anthracite



black

Perfil de aluminio en acabado lacado.

HPL Solid Core

Ref. 54220B



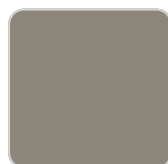
white



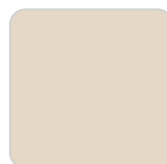
smoked



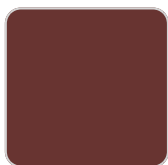
ecru



tortora



cream



garnet



brown



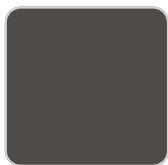
green



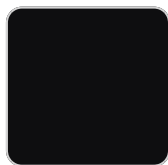
blue



gray



anthracite



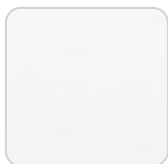
black

Perfil de aluminio en acabado lacado.

tableros

HPL Black Edge

Ref. VVAR03091



white(black edge)



ecru(black edge)



black(black edge)

HPL Solid Core

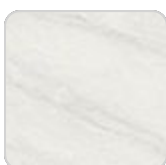
Ref. VVAR03092



black stone



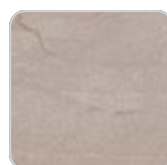
gray stone



white stone



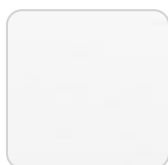
smoked



ecru stone



tortora stone



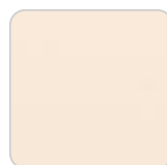
white (white edge)



ecru



tortora



cream

VONDOM



garnet



brown



green



blue



anthracite

Ambients

