

Frame mesa aluminio 200x60x105

por Ramón Esteve

La colección outdoor Frame de Vondom, diseñada por Ramón Esteve, nace de la generación de formas serenas y atemporales valiéndose del marco como geometría elemental. Motivado por las infinitas posibilidades que nos ofrece el material, empleando una tecnología avanzada, se exploran los límites de éste.

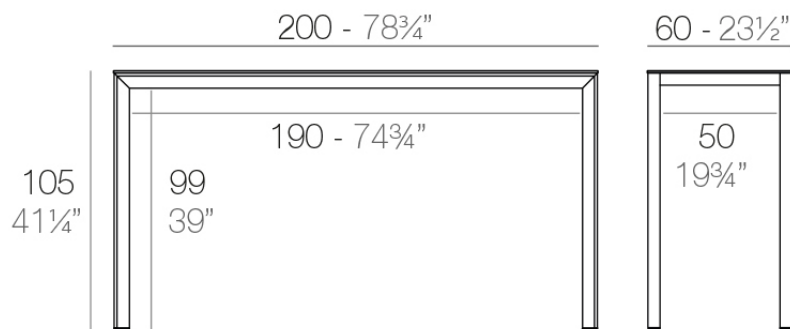


Info

Descripción

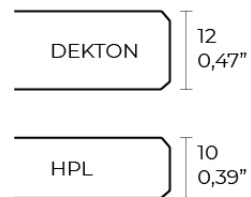
Aluminio extrusionado con base de fundición de aluminio lacado. Tablero en HPL. Apto para uso interior y exterior.

Peso: 30.15 Kg



FRAME Mesa Alta Aluminio 200 x 60

FRAME Bar Table Aluminium 78¾" x 23½"



Acabados

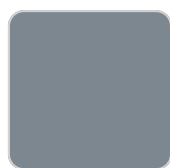
acabados

HPL Black Edge Top

Ref. 54244F



white



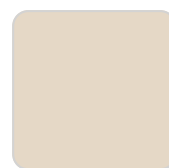
gray



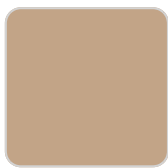
anthracite



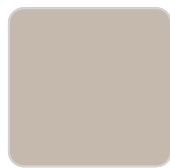
black



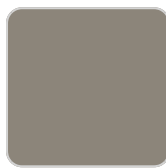
cream



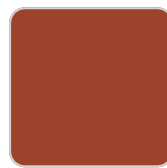
camel



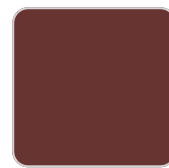
ecru



tortora



clay



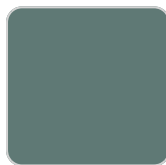
garnet



brown



smoked



green



ocean



blue

Perfil de aluminio en acabado lacado.

HPL Solid Core Top

Ref. 54244FB



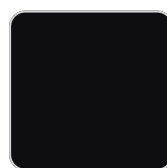
white



gray



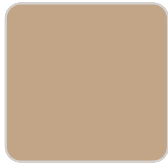
anthracite



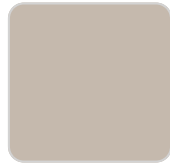
black



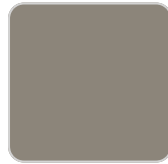
cream



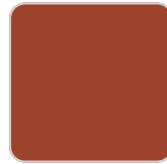
camel



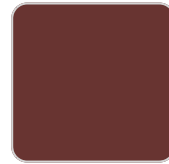
ecru



tortora



clay



garnet



brown



smoked



green



ocean



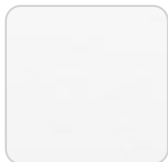
blue

Perfil de aluminio en acabado lacado.

tableros

HPL Black Edge Top

Ref. VVAR02607



white(black edge)



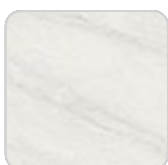
ecru(black edge)



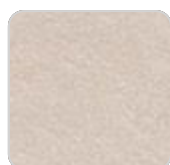
black(black edge)

HPL Solid Core Top

Ref. VVAR02608



white stone



cream stone



green stone



ecru stone



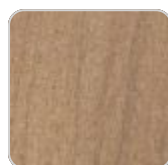
tortora stone



smoked



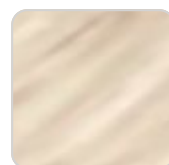
black stone



walnut



gray stone



oak1

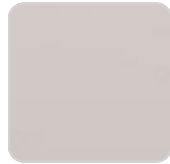
VONDOM



white (white edge)



oak2



ecru



tortora



cream



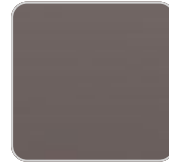
camel



clay



garnet



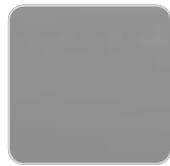
brown



green



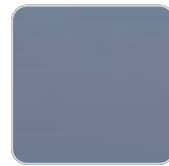
blue



gray



anthracite



ocean

Ambients

