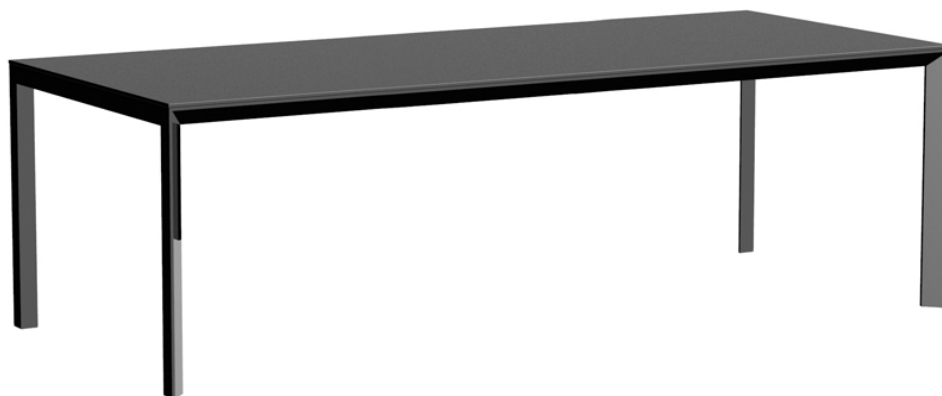


## Frame mesa aluminio 250x100x74

por Ramón Esteve

La colección outdoor Frame de Vondom, diseñada por Ramón Esteve, nace de la generación de formas serenas y atemporales valiéndose del marco como geometría elemental. Motivado por las infinitas posibilidades que nos ofrece el material, empleando una tecnología avanzada, se exploran los límites de éste.



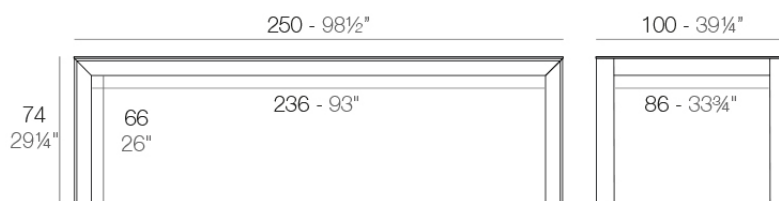
## Info

---

### Descripción

Aluminio extrusionado con base de fundición de aluminio lacado. Tablero en HPL. Apto para uso interior y exterior.

Peso: 52.88 Kg



FRAME Mesa 250x100cm  
FRAME Dinning Table 98 1/2"x39 1/4"

## Acabados

---

### acabados

---

HPL Black Edge Top

Ref. 54247F



white



gray



anthracite



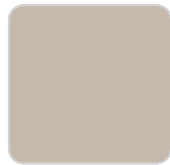
black



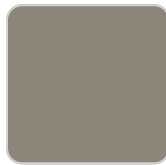
cream



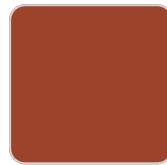
camel



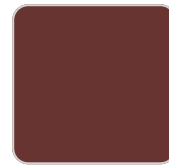
ecru



tortora



clay



garnet



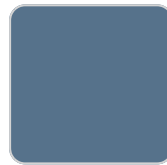
brown



smoked



green



ocean



blue

Perfil de aluminio en acabado lacado.

HPL Solid Core Top

Ref. 54247FB



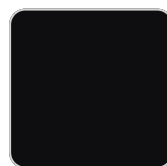
white



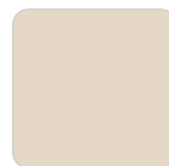
gray



anthracite



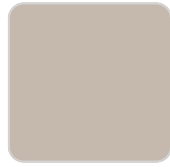
black



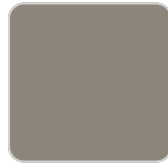
cream



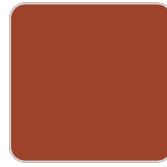
camel



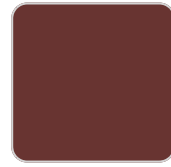
ecru



tortora



clay



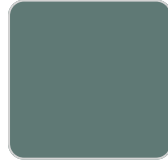
garnet



brown



smoked



green



ocean



blue

Perfil de aluminio en acabado lacado.

## tableros

---

HPL Black Edge Top

Ref. VVAR02793



white(black edge)



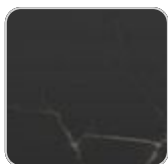
ecru(black edge)



black(black edge)

HPL Solid Core Top

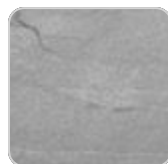
Ref. VVAR02794



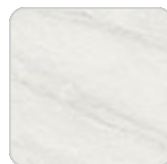
black stone



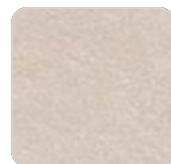
walnut



gray stone



white stone



cream stone



green stone



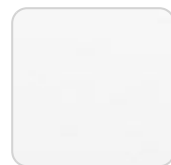
ecru stone



tortora stone



smoked



white (white edge)

# VONDOM



oak1



oak2



ecru



tortora



cream



camel



clay



garnet



brown



green



blue



gray



anthracite



ocean

