

The factory mesa comedor 300x120

por Ramón Esteve

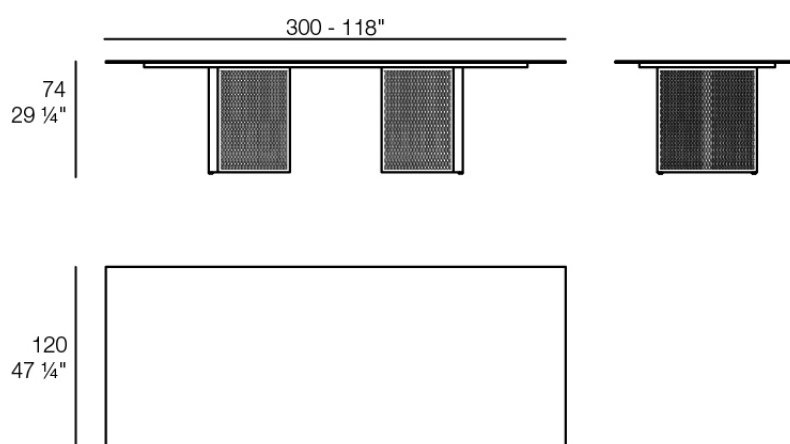
La colección The Factory de Vondom, diseñada por Ramón Esteve, se inspira en la arquitectura de hierro (cast-iron architecture) de Nueva York. Esta colección combina una estética industrial con el confort moderno, ofreciendo una selección de muebles que aportan carácter y sofisticación a cualquier espacio exterior.



Info

Descripción

Peso: 75 Kg



THE FACTORY Mesa Comedor 300x120
THE FACTORY Dining Table 118"x 47 1/4"

Acabados

acabados

HPL Black Edge Top

Ref. 54619



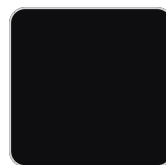
white



gray



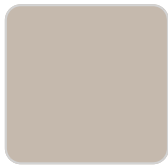
anthracite



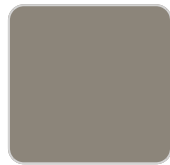
black



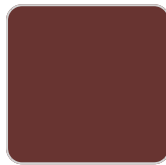
cream



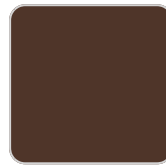
ecru



tortora



garnet



brown



smoked



green



blue

Perfil de aluminio en acabado lacado.

HPL Solid Core Top

Ref. 54619B



white



gray



anthracite

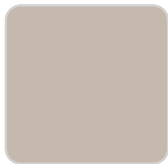


black

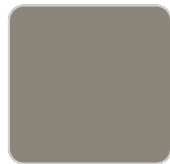


cream

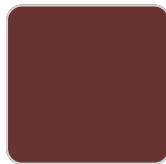
VONDOM



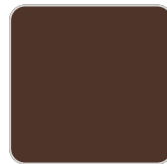
ecru



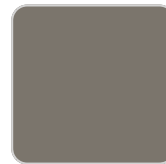
tortora



garnet



brown



smoked



green



blue

Perfil de aluminio en acabado lacado.

Aluminium

Ref. 54619M

Perfil de aluminio en acabado lacado.

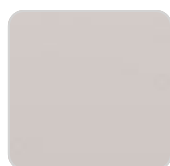
tableros

HPL Black Edge Top

Ref. VVAR03381



white(black edge)

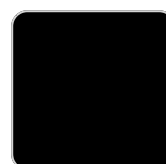
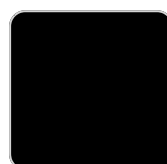
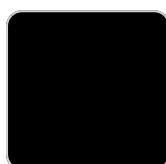
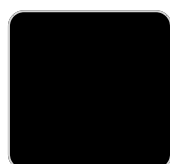
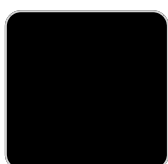


ecru(black edge)



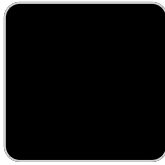
black(black edge)

Ref. VVAR03382



VONDOM

walnut



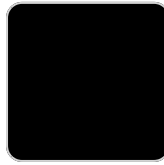
ecru stone

gray stone



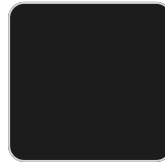
smoked

white stone



tortora stone

cream stone



black stone

green stone



oak1



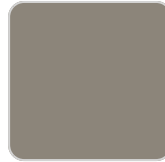
white (white edge)



oak2



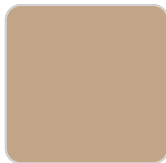
ecru



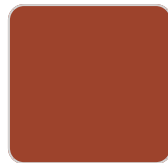
tortora



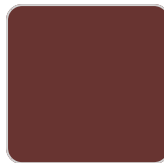
cream



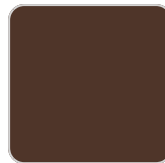
camel



clay



garnet



brown



green



blue



gray



anthracite



ocean

