

Tulum mesa cafe

por Eugeni Quitllet

Tulum, diseñada por Eugeni Quitllet, es una colección de muebles de diseño para vivirla libremente en cualquier lugar del mundo.



Info

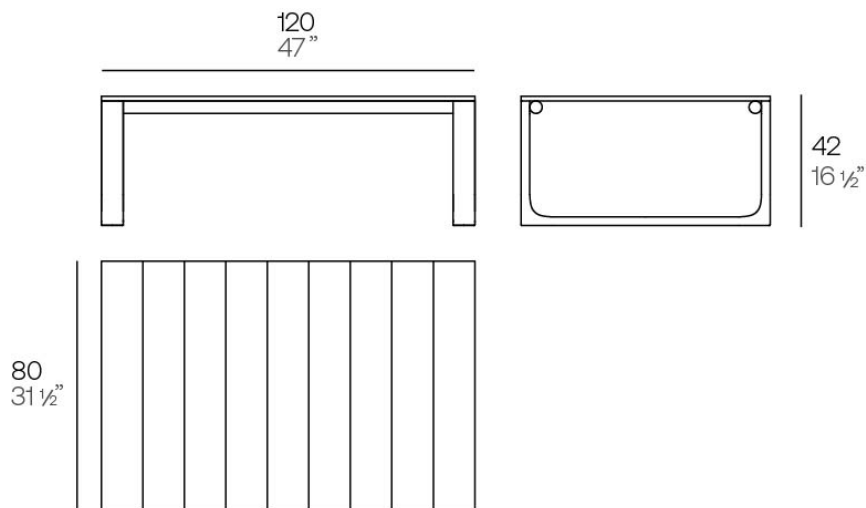
Descripción

La mesa de café de la colección se caracteriza por su estructura de aluminio tratada con pintura epoxi y soldaduras precisas, garantizando durabilidad y resistencia. Su superficie está elaborada con láminas de madera de teca de Indonesia,

aportando un toque de elegancia natural.

Esta mesa combina a la perfección materiales de alta calidad con un diseño estético.

Peso: 14 Kg



Tulum. Mesa Café
Tulum. Coffee Table
ref. 65074

Acabados

acabados

TEAK FINISH – Natural

Ref. 65074



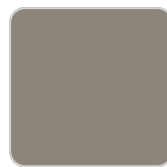
white



smoked



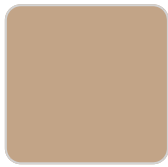
ecru



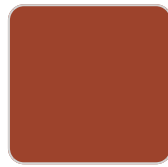
tortora



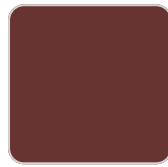
cream



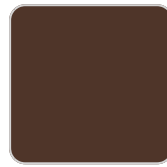
camel



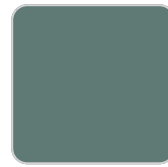
clay



garnet



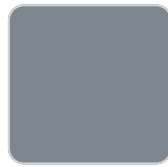
brown



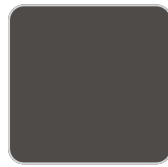
green



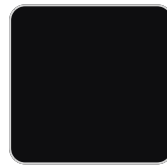
blue



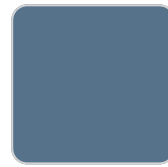
gray



anthracite



black



ocean

TEAK FINISH – Weathered

Ref. 65074E



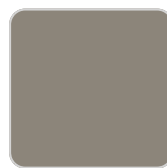
white



smoked



ecru

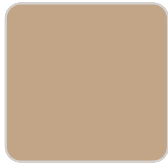


tortora

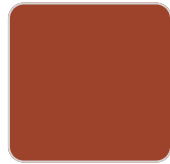


cream

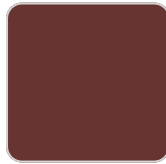
VONDOM



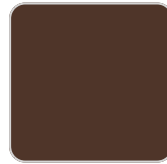
camel



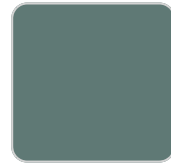
clay



garnet



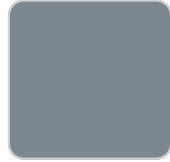
brown



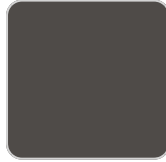
green



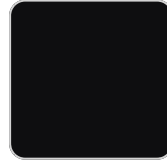
blue



gray



anthracite



black



ocean

tableros

Teak

Ref. 65074TBL



natural teka



weathered teka

Ambients

