

## Planter ø35x30

The most extensive collection of indoor and outdoor planters designed by Studio Vondom. Timeless and minimalist designs that allow you to create unique and original atmospheres for homes, restaurants and any space.



## Info

---

### Description

Pot made of polyethylene resin by rotational moulding. 100% Recyclable. Item suitable for indoor and outdoor use. Available in different finishes.

Weight: 1 Kg

$\overline{\text{Ø}35 - \text{Ø}13\frac{3}{4}"}$



30  
11 $\frac{3}{4}$ "

$\overline{\text{Ø}21 - \text{Ø}8\frac{1}{4}"}$

MACETA Ø35

C = 20 L

MACETA Ø13 $\frac{3}{4}$ "

C = 5 $\frac{1}{4}$  gal

## Finishes

---

### finishes

---

Simple

Ref. 40135



white 2001



black 2002



ecru 2003



tortora 2004



gray 2005



anthracite 2006



brown 2008



garnet 2015



green 2016



cream 2017



blue 2018



camel 2020



clay 2022



ecru granite



cream granite



ice 2101

Matt finishes pot one wall

Simple Lacquered

Ref. 40135F

# VONDOM



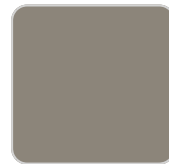
white 3101



black 3102



ecru 3103



tortora 3104



gray 3105



anthracite 3106



garnet 3113



green 3116



cream 3117



blue 3118



brown 3125

## plato

---

Ref. 42727



white 2001



black 2002



ecru 2003



tortora 2004



gray 2005



anthracite 2006



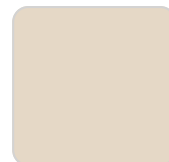
brown 2008



garnet 2015



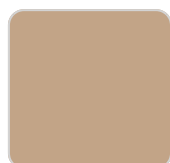
green 2016



cream 2017



blue 2018



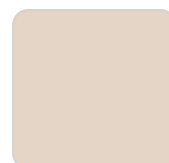
camel 2020



clay 2022



ecru granite



cream granite



ice 2101

