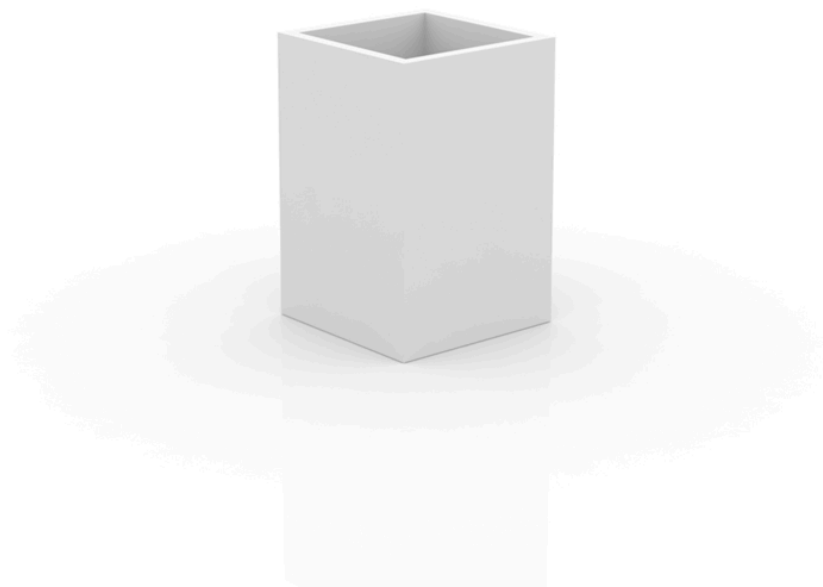


## High cube pot 50x50x75

The most extensive collection of indoor and outdoor planters designed by Studio Vondom. Timeless and minimalist designs that allow you to create unique and original atmospheres for homes, restaurants and any space.



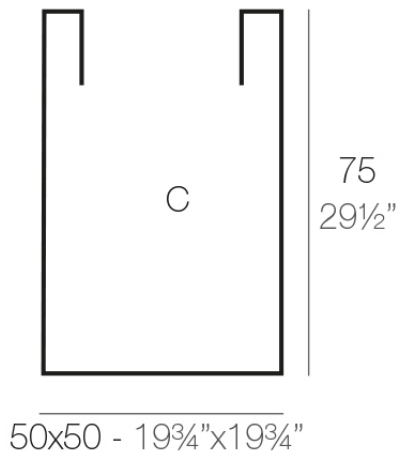
## Info

---

### Description

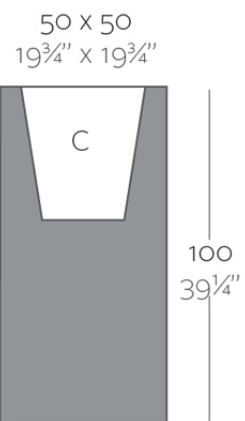
Pot made of polyethylene resin by rotational moulding. 100% Recyclable. Item suitable for indoor and outdoor use. Available in different finishes.

Weight: 9.7 Kg



CUBO ALTO 50 x 75 cm  
HIGH CONE 19 3/4" X 29 1/2"

C = 184 L (75 cm)  
C = 48 1/2 gal (x 29 1/2")



High Cube 100  
Cubo Alto 100

## Finishes

---

### finishes

---

Simple

Ref. 41450



white 2001



black 2002



ecru 2003



tortora 2004



gray 2005



anthracite 2006



brown 2008



garnet 2015



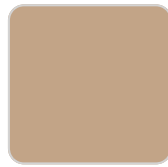
green 2016



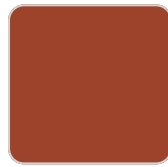
cream 2017



blue 2018



camel 2020



clay 2022



ecru granite



cream granite



ice 2101

Matt finishes pot one wall

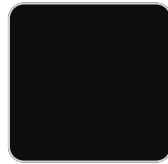
Simple Lacquered

Ref. 41450F

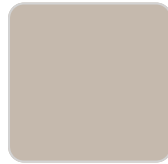
# VONDOM



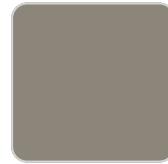
white 3101



black 3102



ecru 3103



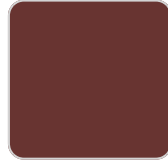
tortora 3104



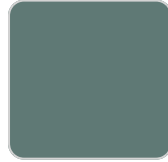
gray 3105



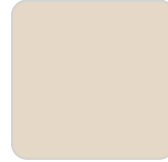
anthracite 3106



garnet 3113



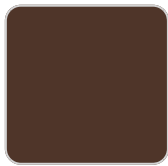
green 3116



cream 3117



blue 3118



brown 3125

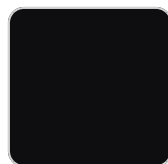
## plato

---

Ref. 42960



white 2001



black 2002



ecru 2003



tortora 2004



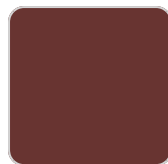
gray 2005



anthracite 2006



brown 2008



garnet 2015



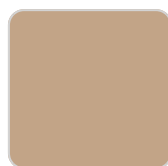
green 2016



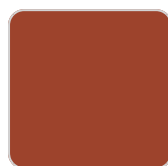
cream 2017



blue 2018



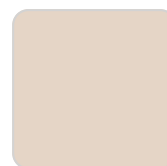
camel 2020



clay 2022



ecru granite



cream granite

# VONDOM



ice 2101

