

Vases table 100x100x73

by JM Ferrero

VASES Collection, is made up of flowerpots, furniture and lighting designed by the Valencian designer JM Ferrero. It's shapes were inspired by diamond cutting, producing pieces of clear-cut shapes and great style, creating a big visual impact.

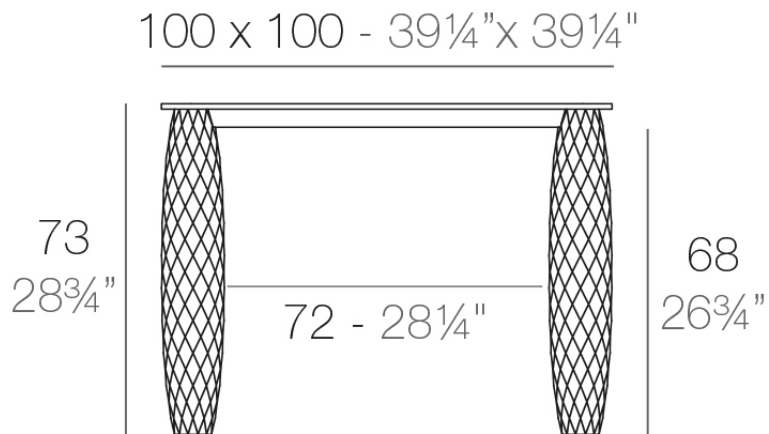


Info

Description

Made of polyethylene resin by rotational moulding. 100% Recyclable. Item suitable for indoor and outdoor use. Available in different finishes.

Weight: 32.3 Kg



VASES Mesa 100x100

VASES Dining Table 39 $\frac{1}{4}$ "x39 $\frac{1}{4}$ "

Finishes

finishes

Basic

Ref. 47080



white 201



ecru 2003



tortora 2004



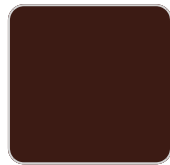
gray 2005



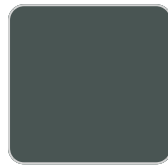
red



brown 2008



garnet 2015



green 2016



anthracite 2006



cream 2017



black 2002



blue 2018



ice 2101



khaki



beige

Matt Polyethylene

Lacquered

Ref. 47080F



white 3101



black 3102



ecru 3103



tortora 3104



gray 3105

VONDOM



anthracite 3106



garnet 3113



green 3116



cream 3117



blue 3118

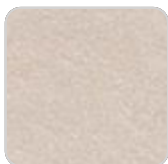


brown 3125

Lacquered Polyethylene

tabletops

HPL Solid Core Top
Ref. VVAR00563



cream stone



green stone



walnut



ecru stone



tortora stone



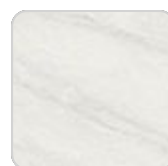
smoked



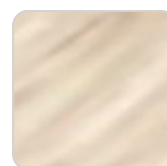
black stone



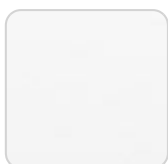
gray stone



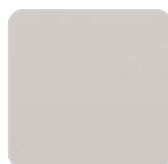
white stone



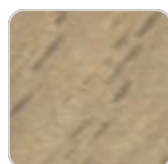
oak1



white (white edge)



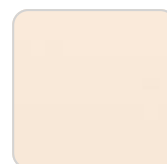
ecru



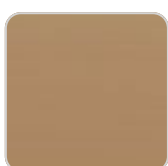
oak2



tortora



cream



camel



clay



garnet



brown

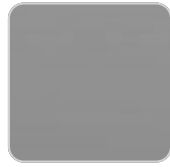


green

VONDOM



blue



gray



anthracite

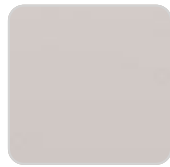


ocean

HPL Black Edge Top Ref. VVAR00563



white(black edge)



ecru(black edge)



black(black edge)

