

Nano chrismy

by Teresa Sapey

The Chrismy collection, designed by Teresa Sapey, is a contemporary take on the classic Christmas tree. Inspired by natural and organic forms, Chrismy rises with an undulating silhouette that evokes movement and lightness, providing a warm and enveloping atmosphere thanks to its interior lighting.

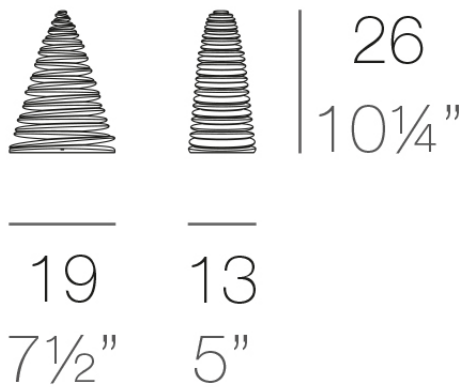


Info

Description

Made of polyethylene resin by rotational moulding. 100% Recyclable. Item suitable for indoor and outdoor use. Available in different finishes.

Weight: 0.37 Kg



CHRISMY Nano Árbol 25cm
CHRISMY Nano Tree 9 3/4"

Finishes

finishes

Lacquered
Ref. 49069F



white 3101



black 3102



ecru 3103



tortora 3104



gray 3105



anthracite 3106



garnet 3113



green 3116



cream 3117



blue 3118



brown 3125

Lacquered Polyethylene

lighting

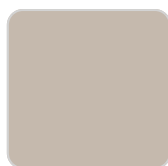
Led – White
Ref. 49069W



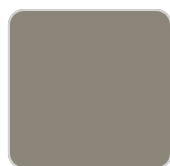
ice 2101

White internally lit unit with LED technology. Available only in matte ice white finish.

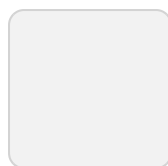
LED RGBW – Battery
Ref. 49069Y



ecru 2003



tortora 2004



ice 2101



khaki



beige

Unit with internal lighting with battery-powered RGBW LED technology. Includes charger and remote control for switching colors and charger. Available only in matte ice white finish.

Ambients

