

## Vertex table 90x90 hpl

by Karim Rashid

One of the latest great works by **KARIM RASHID**, we can find it in **VERTEX**, a family of ultra-contemporary sculpted outdoor & indoor designer furniture collection designed for the Spanish brand **VONDOM**.



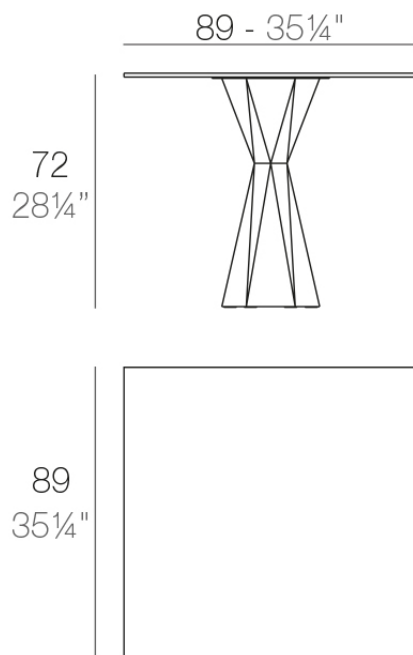
## Info

---

### Description

Made of polyethylene resin by rotational moulding. 100% Recyclable. Item suitable for indoor and outdoor use. Available in different finishes. Tabletop with HPL.

Weight: 54.19 Kg



VERTEX Mesa 90x90  
VERTEX Table 35 1/2"x35 1/2"

## Finishes

---

### finishes

---

#### Basic

Ref. 51018C



white 2001



black 2002



tortora 2004



anthracite 2006



garnet 2015



green 2016



cream 2017



blue 2018

#### Matt Polyethylene

#### Lacquered

Ref. 51018CF



white 3101



black 3102



ecru 3103



tortora 3104



gray 3105



anthracite 3106



garnet 3113



green 3116



cream 3117



blue 3118



brown 3125

Lacquered Polyethylene

## lighting

---

Led – White  
Ref. 51018CW



ice 2101

White internally lit unit with LED technology. Available only in matte ice white finish.

LED RGBW – Cable  
Ref. 51018CL



ice 2101

Unit with internal lighting with RGBW LED technology and remote control unit for switching colors. Available only in matte ice white finish. Remote control included.

LED RGBW DMX – Cable  
Ref. 51018CD



ice 2101

Unit with internal lighting with RGBW LED technology and remote control unit for switching colors. Also controlled by DMX-1024 (wireless), enabling communication between one or more products simultaneously via the DMX transmitter (not included). There are two options to choose from: Professional XLR DMX and Home WIFI DMX. (Remote control included).  
Optional battery

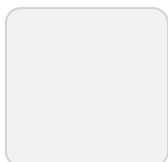
LED RGBW – Battery  
Ref. 51018CY



ice 2101

Unit with internal lighting with battery-powered RGBW LED technology. Includes charger and remote control for switching colors and charger. Available only in matte ice white finish.

LED RGBW DMX – Battery  
Ref. 51018CDY



ice 2101

Unit with internal lighting with RGBW LED technology and remote control unit for switching colors. Also controlled by DMX-1024 (wireless), enabling communication between one or more products simultaneously via the DMX

transmitter (not included). There are two options to choose from: Professional XLR DMX and Home WIFI DMX. (Remote control included).

## tabletops

---

### HPL Solid Core Top

Ref. VVAR00526



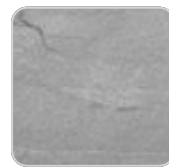
ecru stone



tortora stone



black stone



gray stone



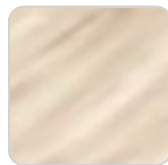
white stone



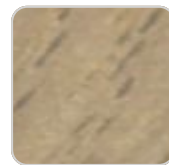
smoked



white (white edge)



oak1



oak2



ecru



tortora



cream



garnet



brown



green



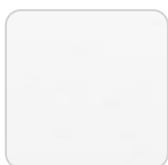
blue



anthracite

### HPL Black Edge Top

Ref. VVAR00577



white(black edge)



ecru(black edge)



black(black edge)

