

Vertex table 80x80 hpl

by Karim Rashid

One of the latest great works by **KARIM RASHID**, we can find it in **VERTEX**, a family of ultra-contemporary sculpted outdoor & indoor designer furniture collection designed for the Spanish brand **VONDOM**.

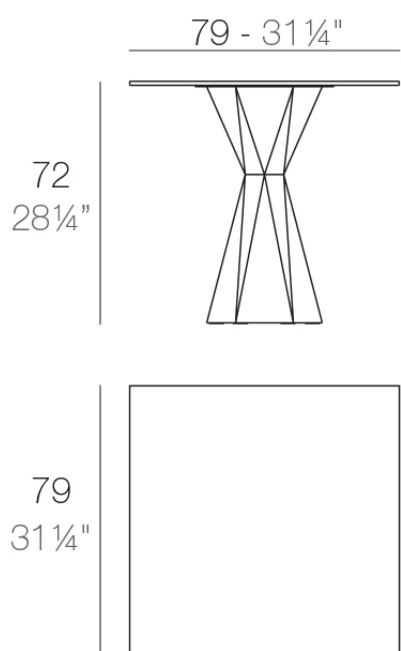


Info

Description

Made of polyethylene resin by rotational moulding. 100% Recyclable. Item suitable for indoor and outdoor use. Available in different finishes. Tabletop with HPL.

Weight: 50.39 Kg



VERTEX Mesa 80x80
VERTEX Table 31 1/2"x31 1/2"

Finishes

finishes

Basic

Ref. 51019C



white 2001



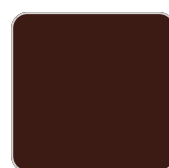
black 2002



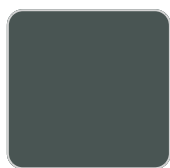
tortora 2004



anthracite 2006



garnet 2015



green 2016



cream 2017



blue 2018

Matt Polyethylene

Lacquered

Ref. 51019CF



white 3101



black 3102



ecru 3103



tortora 3104



gray 3105



anthracite 3106



garnet 3113



green 3116



cream 3117



blue 3118

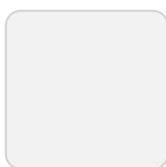


brown 3125

Lacquered Polyethylene

lighting

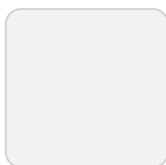
Led – White
Ref. 51019CW



ice 2101

White internally lit unit with LED technology. Available only in matte ice white finish.

LED RGBW – Cable
Ref. 51019CL



ice 2101

Unit with internal lighting with RGBW LED technology and remote control unit for switching colors. Available only in matte ice white finish. Remote control included.

LED RGBW DMX – Cable
Ref. 51019CD



ice 2101

Unit with internal lighting with RGBW LED technology and remote control unit for switching colors. Also controlled by DMX-1024 (wireless), enabling communication between one or more products simultaneously via the DMX transmitter (not included). There are two options to choose from: Professional XLR DMX and Home WIFI DMX. (Remote control included).
Optional battery

LED RGBW – Battery
Ref. 51019CY



ice 2101

Unit with internal lighting with battery-powered RGBW LED technology. Includes charger and remote control for switching colors and charger. Available only in matte ice white finish.

LED RGBW DMX – Battery
Ref. 51019CDY



ice 2101

Unit with internal lighting with RGBW LED technology and remote control unit for switching colors. Also controlled by DMX-1024 (wireless), enabling communication between one or more products simultaneously via the DMX

transmitter (not included). There are two options to choose from: Professional XLR DMX and Home WIFI DMX. (Remote control included).

tabletops

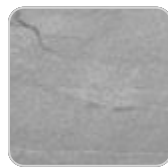
HPL Solid Core Top Ref. VVAR00524



tortora stone



black stone



gray stone



white stone



smoked



ecru stone



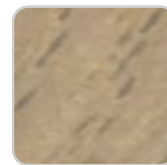
white (white edge)



oak1



ecru



oak2



tortora



cream



garnet



brown



green



blue

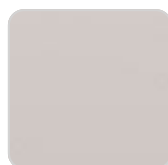


anthracite

HPL Black Edge Top Ref. VVAR00589



white(black edge)



ecru(black edge)



black(black edge)

