

## Rest table 200x100x76

by A-cero

In a world where art and design converge, the Rest Collection by A-Cero is born. Inspired by the ancient technique of origami, each piece is a tribute to the Japanese art of folding, fusing elegance and simplicity under the philosophy “less is more”.



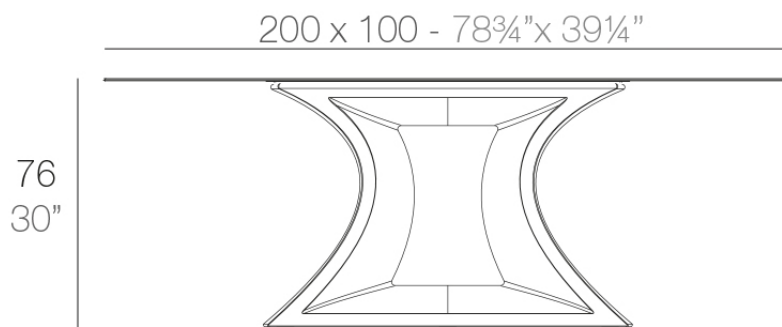
## Info

---

### Description

Table Made of polyethylene resin by rotational moulding. 100% Recyclable. Item suitable for indoor and outdoor use. Tabletop of HPL, Full White or Glass. Available in different finishes.

Weight: 104.65 Kg



REST Mesa  
REST Table

## Finishes

---

### finishes

---

#### Basic

Ref. 53010



white 2001



black 2002



ecru 2003



gray 2005



tortora 2004



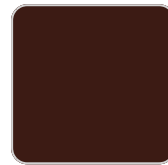
anthracite 2006



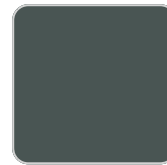
brown 2008



red



garnet 2015



green 2016



cream 2017



blue 2018



ice 2101



khaki



beige

#### Matt Polyethylene

#### Lacquered

Ref. 53010F



white 3101



black 3102



ecru 3103



tortora 3104



gray 3105

# VONDON



anthracite 3106



garnet 3113



green 3116



cream 3117



blue 3118



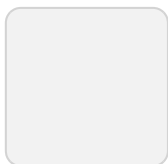
brown 3125

Lacquered Polyethylene

## lighting

---

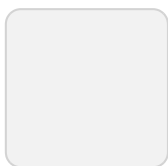
Led – White  
Ref. 53010W



ice 2101

White internally lit unit with LED technology. Available only in matte ice white finish.

LED RGBW – Cable  
Ref. 53010L



ice 2101

Unit with internal lighting with RGBW LED technology and remote control unit for switching colors. Available only in matte ice white finish. Remote control included.

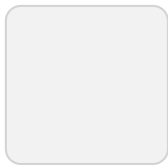
## LED RGBW DMX – Cable Ref. 53010D



ice 2101

Unit with internal lighting with RGBW LED technology and remote control unit for switching colors. Also controlled by DMX-1024 (wireless), enabling communication between one or more products simultaneously via the DMX transmitter (not included). There are two options to choose from: Professional XLR DMX and Home WIFI DMX. (Remote control included).  
Optional battery

## LED RGBW – Battery Ref. 53010Y



ice 2101

Unit with internal lighting with battery-powered RGBW LED technology. Includes charger and remote control for switching colors and charger. Available only in matte ice white finish.

## LED RGBW DMX – Battery Ref. 53010DY



ice 2101

Unit with internal lighting with RGBW LED technology and remote control unit for

switching colors. Also controlled by DMX-1024 (wireless), enabling communication between one or more products simultaneously via the DMX transmitter (not included). There are two options to choose from: Professional XLR DMX and Home WIFI DMX. (Remote control included).

## tabletops

---

### HPL Black Edge Top

Ref. VVAR02176



white(black edge)



ecru(black edge)



black(black edge)

### HPL Solid Core Top

Ref. VVAR02176B



white (white edge)



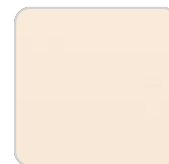
ecru



tortora



smoked



cream



camel



clay



garnet



brown



green



ocean



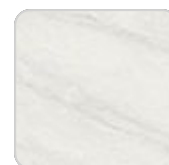
blue



gray



anthracite



white stone

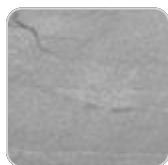
# VONDOM



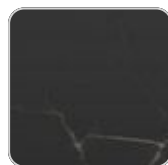
ecru stone



tortora stone



gray stone



black stone



oak1



oak2



walnut

## Ambients

---

