

## Faz armchair steel base

by Ramón Esteve

Vondom's Faz collection, designed by Ramón Esteve, is one of the firm's most iconic collections. It stands out for its modular design and sophistication, representing harmony, serenity and timelessness through mineral and emphatic shapes. Faz transforms environments with its unique combination of material and light, creating an enveloping and exclusive atmosphere.



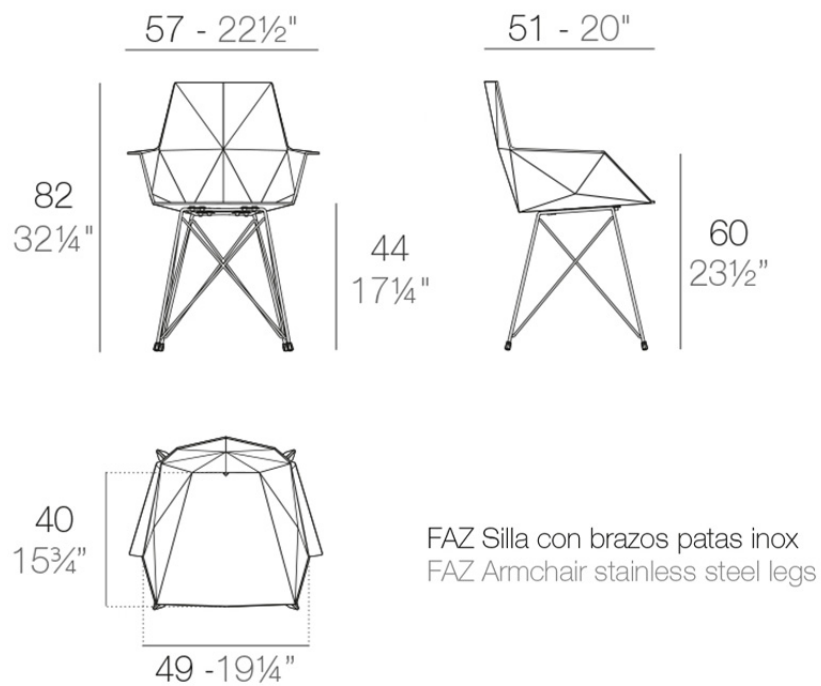
## Info

---

### Description

One piece moulded seat and back polypropylene chair. The legs are made in stainless steel with lacquer in a colour to match the seat. Item suitable for indoor and outdoor use.

Weight: 5.03 Kg



## Finishes

---

### finishes

---

Basic

Ref. 54045



white



black



ecru

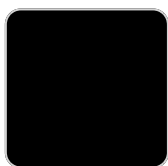
Available in various colors

### estructura

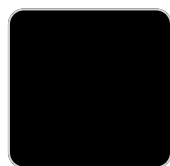
---

LEGS

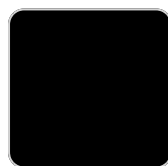
Ref. VVAR00991



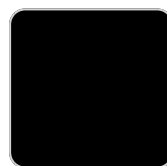
white



gray



black



ecru

### fabric

---

BAIONA

Ref. 54044CO

# VONDOM



garnet 10107 baiona



black 10114 baiona



clay 10106 baiona



gray 10113 baiona



camel 10104 baiona



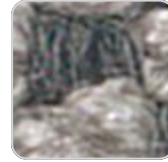
blue 10112 baiona



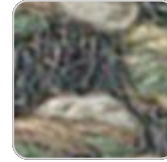
cream 10103 baiona



ocean 10111 baiona



tortora 10102 baiona



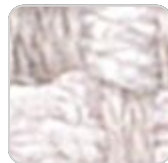
green 10110 baiona



ecru 10101 baiona



jade 10109 baiona



white 10100 baiona



brown 10108 baiona

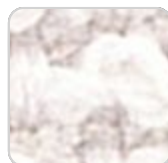
Group 1C. High density 100% acrylic fabric, which provides a solid feel. It has an irregular pattern that adds a handcrafted touch.

## CALELLA

Ref. 54044CO



gray 10128 calella



white 10120 calella



blue 10127 calella



jade 10126 calella



clay 10125 calella



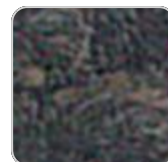
mustard 10124 calella



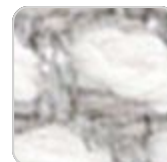
cream 10123 calella



tortora 10122 calella



anthracite 10129  
calella



ecru 10121 calella

Group 1C. PFAS-free 100% acrylic fabric with a rich and unusual texture and an exceptional softness, which enhances the comfort of the furniture.

## FISTERRA

# VONDOM

Ref. 54044CO



cream 10132 fisterra



white 10130 fisterra



ecru 10131 fisterra



tortora 10135 fisterra



camel 10134 fisterra



peach 10146 fisterra



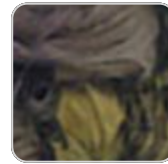
clay 10137 fisterra



garnet 10138 fisterra



brown 10136 fisterra



olive 10145 fisterra



jade 10139 fisterra



green 10140 fisterra



ocean 10141 fisterra



blue 10142 fisterra



gray 10143 fisterra



anthracite 10144  
fisterra



black 10147 fisterra

Group 1C. 100% acrylic fabric, with a distinctive irregular marbled pattern and a soft feel.

## PORTONOVO

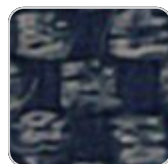
Ref. 54044CO



gray 10163 portonovo



mustard 10155  
portonovo



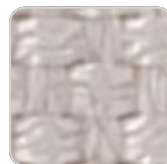
blue 10162 portonovo



camel 10154  
portonovo



ocean 10161  
portonovo



# VONDOM

cream 10153  
portonovo



white 10150  
portonovo

green 10160  
portonovo



brown 10158  
portonovo

tortora 10152  
portonovo



black 10165  
portonovo

ecru 10151 portonovo

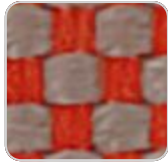


garnet 10157  
portonovo

jade 10159 portonovo



anthracite 10164  
portonovo



clay 10156 portonovo

Group 1A. 100% acrylic fabric, with a flat and simple design, which adapts to any decorative style.

## ALTEA

Ref. 54044CO



tortora 1102 altea



white 1100 altea



camel 1120 altea



clay 1122 altea



garnet 1106 altea



brown 1104 altea



jade 1125 altea



ocean 1123 altea



gray 1101 altea



anthracite 1124 altea



black 1105 altea

Group 1A. Soft outdoor fabric with leather-like texture.

## AROUSA

# VONDOM

Ref. 54044CO



tortora 1209 arousa



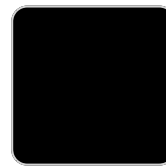
camel 1230 arousa



clay 1231 arousa



brown 1214 arousa



jade 1235 arousa



gray 1208 arousa



anthracite 1210  
arousa

Group 1B. Soft outdoor fabric with shiny finish.

## Ambients

---

