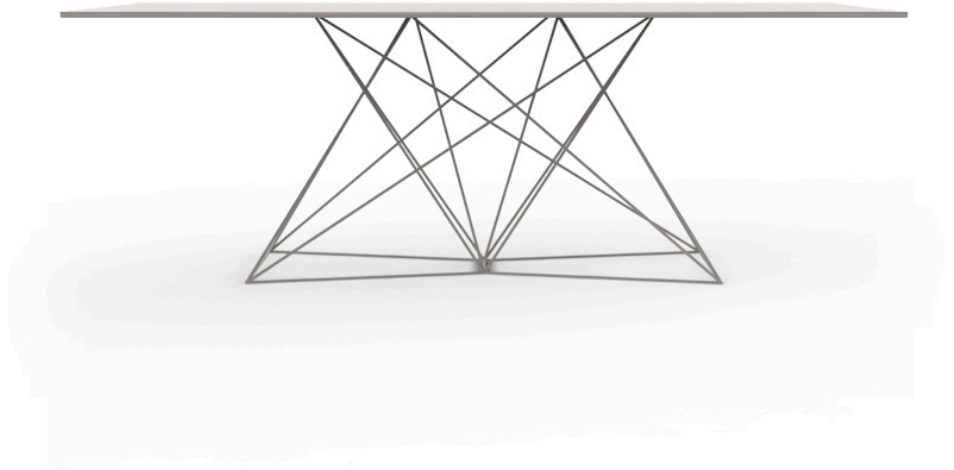


## Faz table stainless 200x100x72

by Ramón Esteve

Vondom's Faz collection, designed by Ramón Esteve, is one of the firm's most iconic collections. It stands out for its modular design and sophistication, representing harmony, serenity and timelessness through mineral and emphatic shapes. Faz transforms environments with its unique combination of material and light, creating an enveloping and exclusive atmosphere.



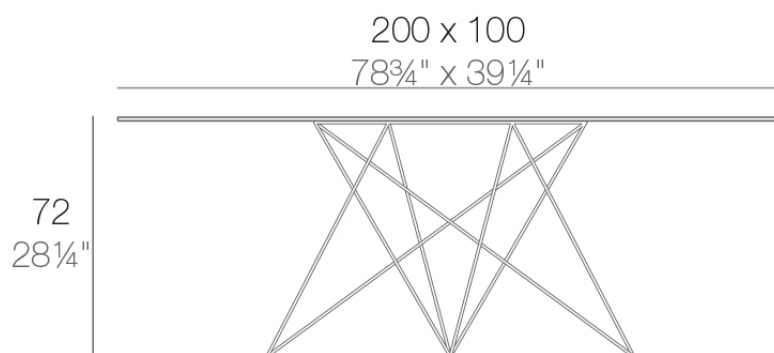
## Info

---

### Description

Stainless steel legs with lacquer in a colour to match the tabletop. Tabletop is available in HPL or Full White (white only).

Weight: 49.08 Kg



FAZ Mesa Inox 200 x 100  
FAZ Dinning Table Stainless Base 78<sup>3</sup>/<sub>4</sub>"x39<sup>1</sup>/<sub>4</sub>"

## Finishes

---

### tabletops

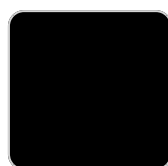
---

HPL Black Edge Top

Ref. 54053



white

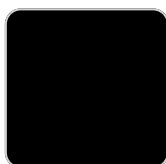


black

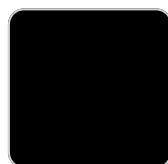
HPL black edge

HPL Solid Core Top

Ref. 54053B



white



black

HPL solid core

### tabletops

---

HPL Black Edge Top

Ref. VVAR00622

# VONDOM



white(black edge)



ecru(black edge)



black(black edge)

## HPL Solid Core Top Ref. VVAR02176B



white (white edge)



ecru



tortora



smoked



cream



camel



clay



garnet



brown



green



ocean



blue



gray



anthracite



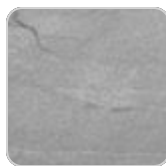
white stone



ecru stone



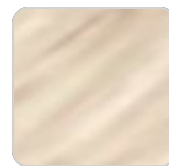
tortora stone



gray stone



black stone



oak1



oak2



walnut

## Ambients

---

