

## Faz table stainless base 90x90x72

by Ramón Esteve

Vondom's Faz collection, designed by Ramón Esteve, is one of the firm's most iconic collections. It stands out for its modular design and sophistication, representing harmony, serenity and timelessness through mineral and emphatic shapes. Faz transforms environments with its unique combination of material and light, creating an enveloping and exclusive atmosphere.



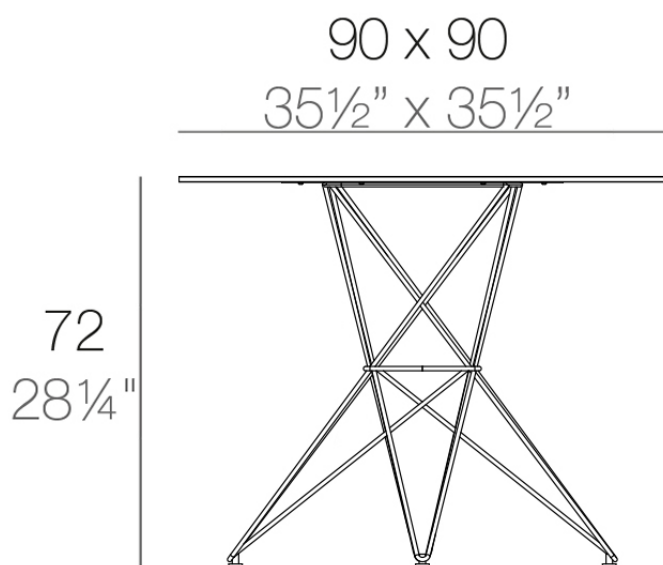
## Info

---

### Description

Made of polyethylene resin by rotational moulding. 100% Recyclable. Item suitable for indoor and outdoor use. Available in different finishes.

Weight: 15 Kg



FAZ Mesa Inox 90x90  
FAZ Dining Table  
Stainless Base 35½"

## Finishes

---

### finishes

---

Basic

Ref. 54054C



white



smoked



ecru



tortora



cream



garnet



brown



green



blue



gray



anthracite



black

Matt Polyethylene

HPL Solid Core

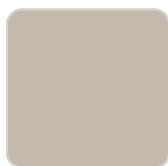
Ref. 54054CB



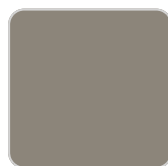
white



smoked



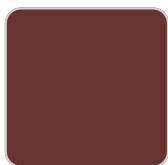
ecru



tortora



cream



garnet



brown



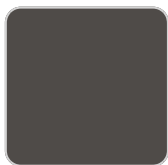
green



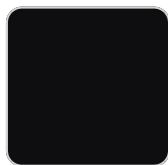
blue



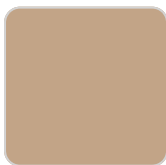
gray



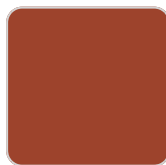
anthracite



black



camel 2020



clay 2022



ecru granite



cream granite

Matt Polyethylene

## tabletops

---

HPL Black Edge

Ref. VVAR00577



white(black edge)



ecru(black edge)



black(black edge)

## Ambients

---

