

## Faz table stainless base 70x70x72

by Ramón Esteve

Vondom's Faz collection, designed by Ramón Esteve, is one of the firm's most iconic collections. It stands out for its modular design and sophistication, representing harmony, serenity and timelessness through mineral and emphatic shapes. Faz transforms environments with its unique combination of material and light, creating an enveloping and exclusive atmosphere.



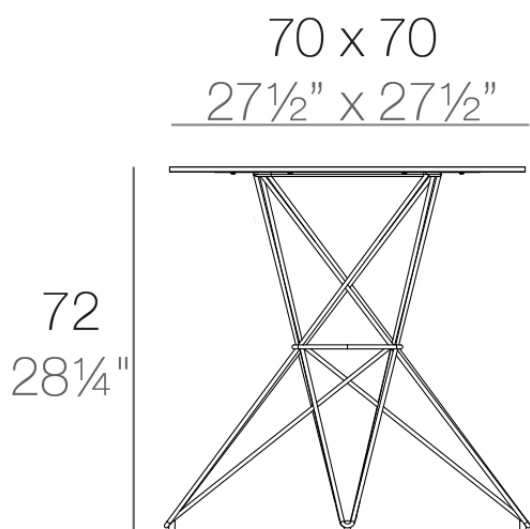
## Info

---

### Description

Made of polyethylene resin by rotational moulding. 100% Recyclable. Item suitable for indoor and outdoor use. Available in different finishes.

Weight: 9.5 Kg



FAZ Mesa Inox 70x70  
FAZ Dining Table Stainless  
Base 27½"x 27½"

## Finishes

---

### finishes

---

Basic

Ref. 54058C



white



smoked



ecru



tortora



cream



garnet



brown



green



blue



gray



anthracite



black

Matt Polyethylene

HPL Solid Core

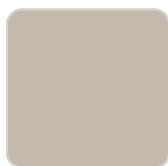
Ref. 54058CB



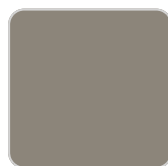
white



smoked



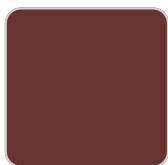
ecru



tortora



cream



garnet



brown



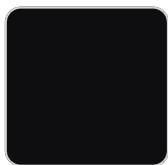
green



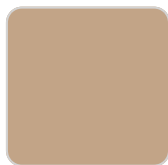
blue



gray



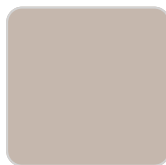
black



camel 2020



clay 2022



ecru granite



cream granite

Matt Polyethylene

## tabletops

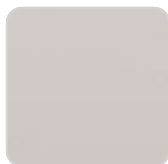
---

HPL Black Edge

Ref. VVAR00522



white(black edge)



ecru(black edge)



black(black edge)

## Ambients

---

