

Faz table stainless base 100x100x72

by Ramón Esteve

Vondom's Faz collection, designed by Ramón Esteve, is one of the firm's most iconic collections. It stands out for its modular design and sophistication, representing harmony, serenity and timelessness through mineral and emphatic shapes. Faz transforms environments with its unique combination of material and light, creating an enveloping and exclusive atmosphere.

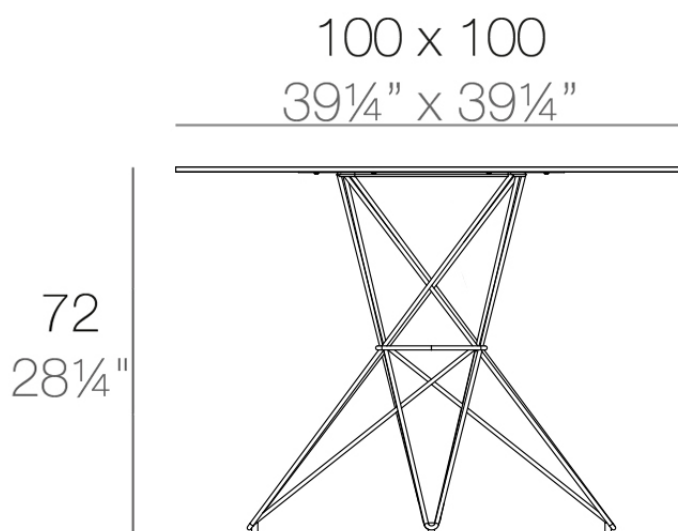


Info

Description

Made of polyethylene resin by rotational moulding. 100% Recyclable. Item suitable for indoor and outdoor use. Available in different finishes.

Weight: 18.1 Kg



FAZ Mesa Inox 100x100
FAZ Dining Table Stainless
Base 39 1/4" x 39 1/4"

Finishes

finishes

BASIC

Ref. 54060CB



white



smoked



ecru



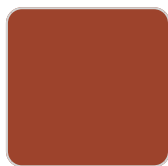
tortora



cream



camel 2020



clay 2022



garnet



brown



green



blue



gray



anthracite



black



ecru granite



cream granite

Matt Polyethylene

tabletops

Solid Core

Ref. VVAR00555



white stone



smoked



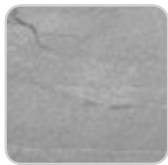
ecru stone



tortora stone



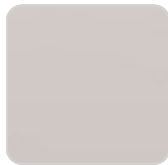
black stone



gray stone



white (white edge)



ecru



tortora



cream



garnet



brown



green



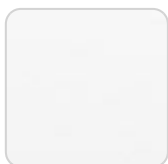
blue



anthracite

HPL

Ref. VVAR00555



white(black edge)



ecru(black edge)

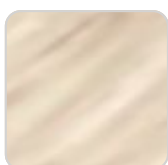


black(black edge)

HPL black edge

Solid Core wood

Ref. VVAR00555



oak1



oak2

