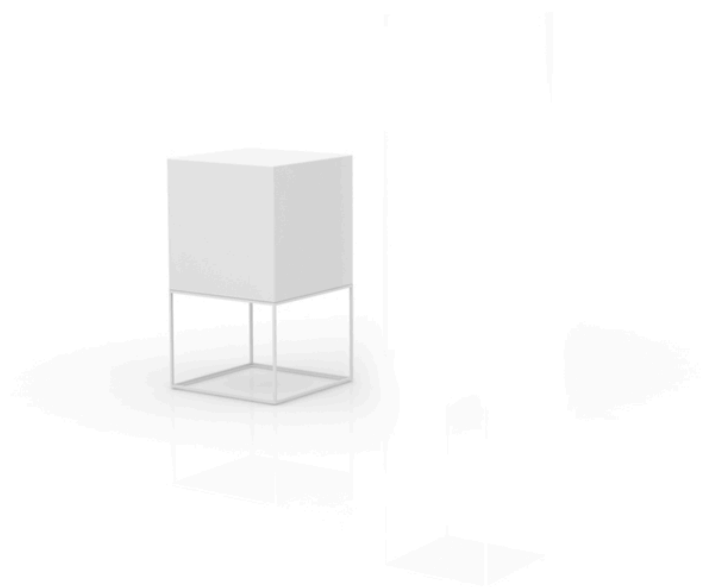


## Vela cube lamp 40x40x70

by Ramón Esteve

The Vela collection, designed by Ramón Esteve for Vondom, offers a wide range of outdoor furniture and planters that combine the comfort and warmth of indoor furniture. With a design that balances proportions and geometric lines, Vela transforms any space into a cosy and elegant retreat.



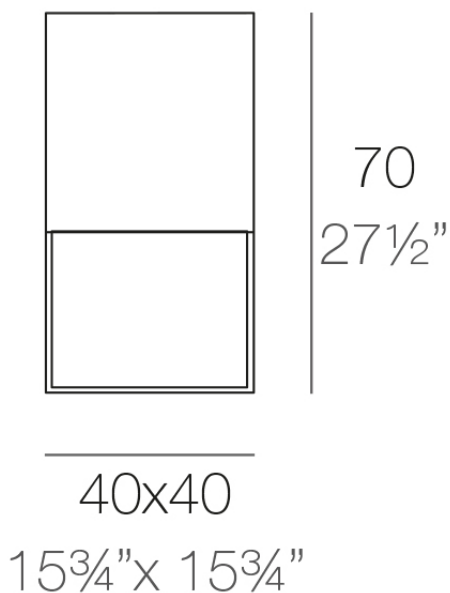
## Info

---

### Description

Made of polyethylene resin by rotational moulding. 100% Recyclable. Item suitable for indoor and outdoor use. Available in different finishes.

Weight: 6 Kg



VELA Lámpara Cubo 70  
VELA Lamp Cube 70

## Finishes

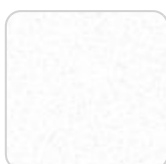
---

### lighting

---

#### WHITE LED

Ref. 54064W

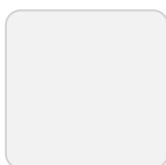


ice 2101

White internally lit unit with LED technology. Available only in matte ice white finish.

#### RGBW LED

Ref. 54064L



ice 2101

Unit with internal lighting with RGBW LED technology and remote control unit for switching colors. Available only in matte ice white finish. Remote control included.

#### RGBW LED DMX

Ref. 54064D



ice 2101

Unit with internal lighting with RGBW LED technology and remote control unit for switching colors. Also controlled by DMX-1024 (wireless), enabling communication between one or more products simultaneously via the DMX transmitter (not included). There are two options to choose from: Professional XLR DMX and Home WIFI DMX. (Remote control included).  
Optional battery

## RGBW LED BATTERY

Ref. 54064Y

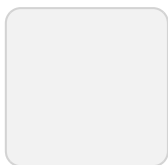


ice 2101

Unit with internal lighting with battery-powered RGBW LED technology. Includes charger and remote control for switching colors and charger. Available only in matte ice white finish.

## RGBW LED DMX BATTERY

Ref. 54064DY



ice 2101

Unit with internal lighting with RGBW LED technology and remote control unit for switching colors. Also controlled by DMX-1024 (wireless), enabling communication between one or more products simultaneously via the DMX

transmitter (not included). There are two options to choose from: Professional XLR DMX and Home WIFI DMX. (Remote control included).

## estructura

---

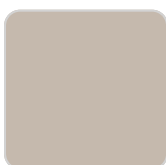
Ref. VVAR00486



white



smoked



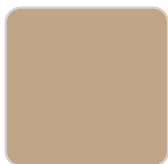
ecru



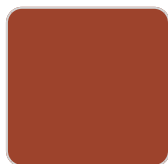
tortora



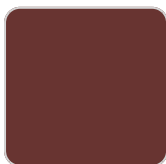
cream



camel



clay



garnet



brown



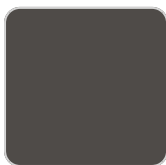
green



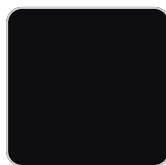
blue



gray



anthracite



black



ocean

## Ambients

---

