

## Faz table stainless base 80x80

by Ramón Esteve

Vondom's Faz collection, designed by Ramón Esteve, is one of the firm's most iconic collections. It stands out for its modular design and sophistication, representing harmony, serenity and timelessness through mineral and emphatic shapes. Faz transforms environments with its unique combination of material and light, creating an enveloping and exclusive atmosphere.



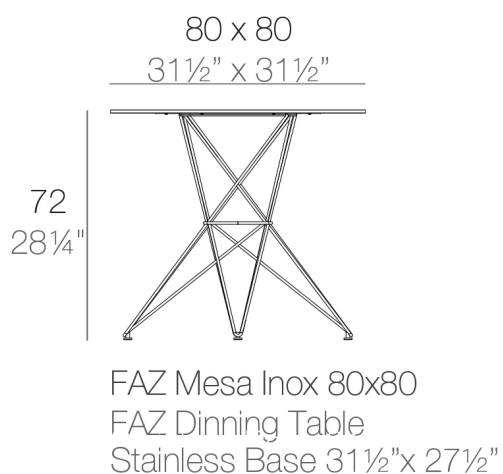
## Info

---

### Description

Made of polyethylene resin by rotational moulding. 100% Recyclable. Item suitable for indoor and outdoor use. Available in different finishes.

Weight: 11.2 Kg



## Finishes

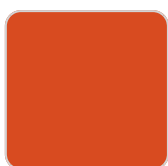
---

### finishes

---

BASIC

Ref. 54106CB



orange



white



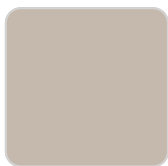
white 201



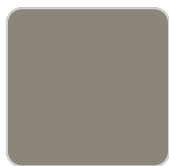
ecru 2003



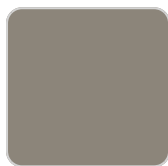
smoked



ecru



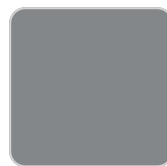
tortora



tortora 2004



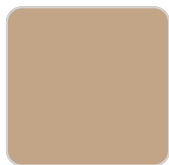
cream



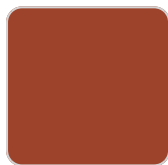
gray 2005



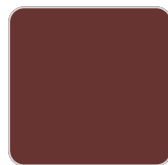
cream 2017



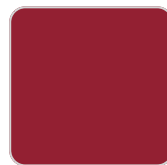
camel 2020



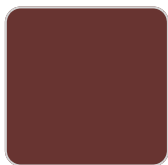
clay 2022



garnet



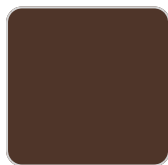
red



garnet 2015



brown 2008



brown



green 2016



green



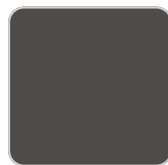
blue



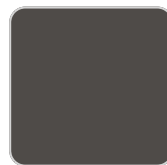
blue 2018



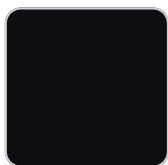
gray



anthracite 2006



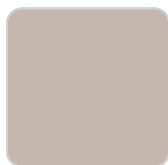
anthracite



black



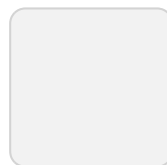
black 2002



ecru granite



cream granite



ice 2101



khaki



beige

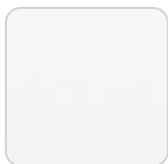
Matt Polyethylene

## tabletops

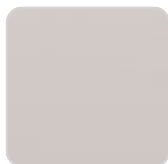
---

HPL

Ref. VVAR00522



white(black edge)



ecru(black edge)



black(black edge)

HPL black edge

