

Faz table base h:73cm

by Ramón Esteve

Vondom's Faz collection, designed by Ramón Esteve, is one of the firm's most iconic collections. It stands out for its modular design and sophistication, representing harmony, serenity and timelessness through mineral and emphatic shapes. Faz transforms environments with its unique combination of material and light, creating an enveloping and exclusive atmosphere.



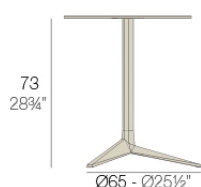
Info

Description

Extruded aluminum tube with cast aluminum base coated with epoxy baked painting. Item suitable for indoor and outdoor use. Table top not included.

Weight: 4.17 Kg

BASE 3 LEGS - BASE 3 PATAS



fixed top / fijo ref: 54126

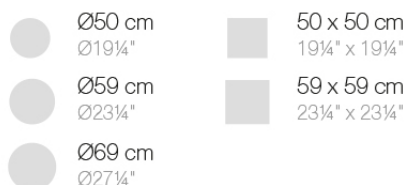
collapsible top / abatible ref: 54126T

fixed for glass / fijo para vidrio ref: 54126V

FAZ BASE MESA Ø65 H73

FAZ TABLE BASE Ø25 1/2" H28 3/4"

TABLE TOPS OPTIONS - OPCIONES SOBRES



Ø50 cm

Ø19 1/4"

50 x 50 cm

19 1/4" x 19 1/4"

Ø59 cm

Ø23 1/4"

59 x 59 cm

23 1/4" x 23 1/4"

Ø69 cm

Ø27 1/4"

Finishes

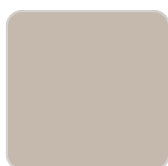
finishes

ALUMINIUM BASE

Ref. 54126V



white



ecru



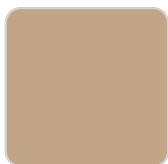
smoked



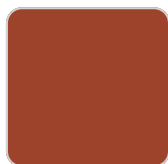
tortora



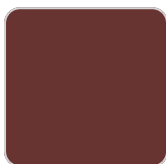
cream



camel



clay



garnet



brown



green



blue



gray



anthracite



black



ocean

Powder coated aluminum base with non collapsable aluminum attachment powder coated, made exclusively for our glass tops.

Ambients

