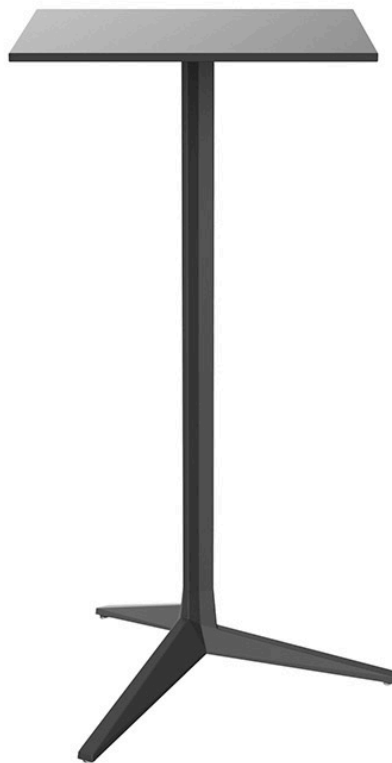


## Faz table base h:105cm

by Ramón Esteve

Vondom's Faz collection, designed by Ramón Esteve, is one of the firm's most iconic collections. It stands out for its modular design and sophistication, representing harmony, serenity and timelessness through mineral and emphatic shapes. Faz transforms environments with its unique combination of material and light, creating an enveloping and exclusive atmosphere.



## Info

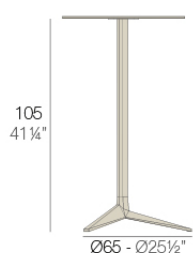
---

### Description

Extruded aluminum tube with cast aluminum base coated with epoxy baked painting. Item suitable for indoor and outdoor use. Table top not included.

Weight: 5 Kg

BASE 3 LEGS - BASE 3 PATAS



fixed top / fijo ref: 54127

collapsible top / abatible ref: 54127T

fixed for glass / fijo para vidrio ref: 54127V

FAZ BASE MESA Ø65 H105

FAZ TABLE BASE Ø25 1/2" H41 1/4"

TABLE TOPS OPTIONS - OPCIONES SOBRES

● Ø50 cm Ø19 1/4"	■ 50 x 50 cm 19 1/4" x 19 1/4"
● Ø59 cm Ø23 1/4"	■ 59 x 59 cm 23 1/4" x 23 1/4"

## Finishes

---

### finishes

---

Fixed

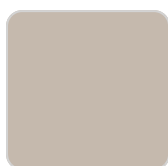
Ref. 54127



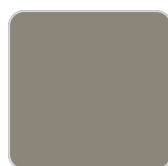
white



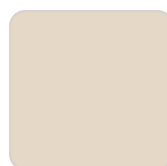
smoked



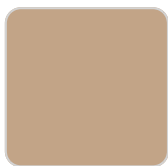
ecru



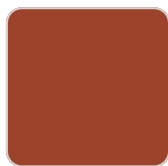
tortora



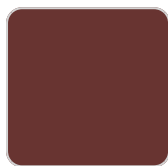
cream



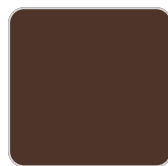
camel



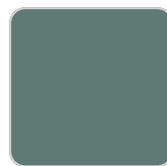
clay



garnet



brown



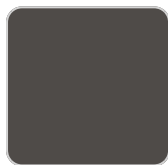
green



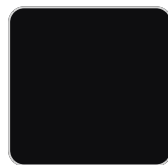
blue



gray



anthracite



black



ocean

Powder coated aluminum base with non collapsable attachment made of polyamide and fiber glass

Top Abatible

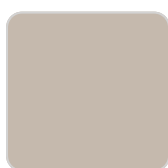
Ref. 54127T



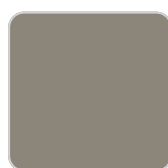
white



smoked



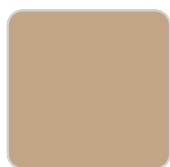
ecru



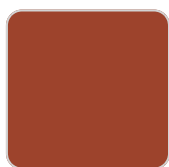
tortora



cream



camel



clay



garnet



brown



green



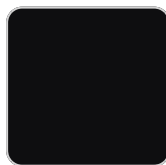
blue



gray



anthracite



black



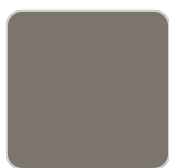
ocean

Powder coated aluminum base with 90° collapsable attachment made of polyamide and fiber glass

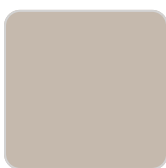
Fixed for glass  
Ref. 54127V



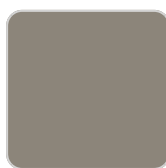
white



smoked



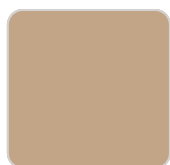
ecru



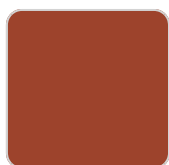
tortora



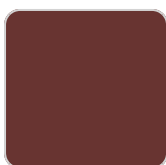
cream



camel



clay



garnet



brown



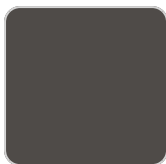
green



blue



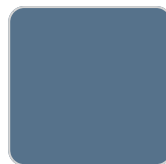
gray



anthracite



black



ocean

Powder coated aluminum base with non collapsable aluminum attachment powder coated, made exclusively for our glass tops.

## tabletops

---

### HPL Black Edge

Ref. 66107



white(black edge)



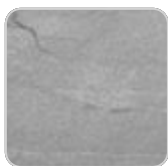
ecru(black edge)



black(black edge)

### HPL Solid Core

Ref. 66107B



gray stone



tortora stone



walnut



green stone



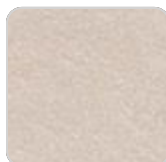
ecru stone



white stone



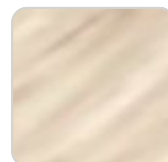
black stone



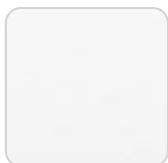
cream stone



smoked



oak1



white (white edge)



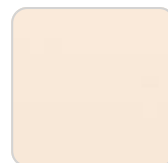
oak2



ecru



tortora



cream



camel



clay



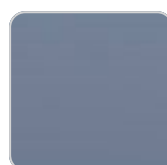
garnet



brown



green



blue

gray

anthracite

ocean

Ref. 66101

## Ambients

---

