

Faz table base ø80x73h

by Ramón Esteve

Vondom's Faz collection, designed by Ramón Esteve, is one of the firm's most iconic collections. It stands out for its modular design and sophistication, representing harmony, serenity and timelessness through mineral and emphatic shapes. Faz transforms environments with its unique combination of material and light, creating an enveloping and exclusive atmosphere.

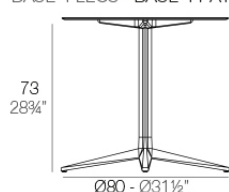


Info

Description

Weight: 5.87 Kg

BASE 4 LEGS - BASE 4 PATAS



fixed top / fijo ref: 54141

fixed for glass / fijo para vidrio ref: 54141V

FAZ BASE MESA Ø80 H73

FAZ TABLE BASE Ø31 1/2" H28 3/4"

TABLE TOPS OPTIONS - OPCIONES SOBRES



Ø79 cm
Ø31"



69 x 69 cm
27 1/4" x 27 1/4"



Ø89 cm
Ø25"



79 x 79 cm
31" x 31"



Ø100 cm
Ø39 1/4"



89 x 89 cm
25" x 25"

Finishes

finishes

Fixed

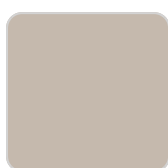
Ref. 54141



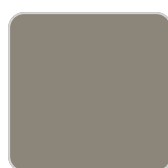
white



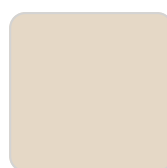
smoked



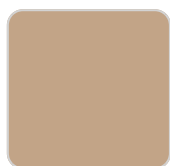
ecru



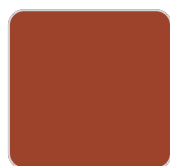
tortora



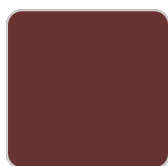
cream



camel



clay



garnet



brown



green



blue



gray



anthracite



black



ocean

Powder coated aluminum base with non collapsable attachment made of polyamide and fiber glass

Fixed for glass

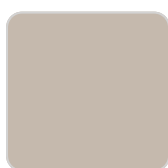
Ref. 54141V



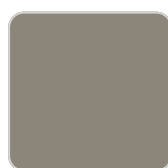
white



smoked



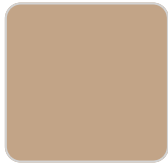
ecru



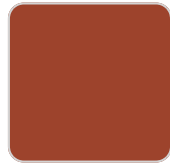
tortora



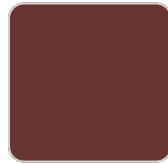
cream



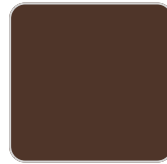
camel



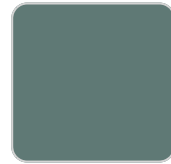
clay



garnet



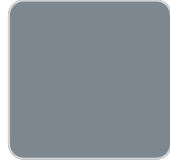
brown



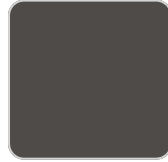
green



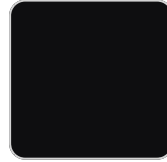
blue



gray



anthracite



black



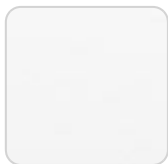
ocean

Powder coated aluminum base with non collapsable aluminum attachment powder coated, made exclusively for our glass tops.

tabletops

HPL Black Edge

Ref. 66110



white(black edge)



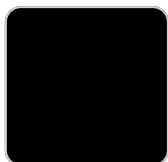
ecru(black edge)



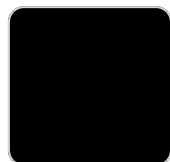
black(black edge)

HPL Solid Core

Ref. 66110B



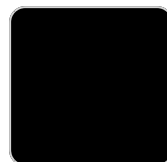
ecru stone



white stone



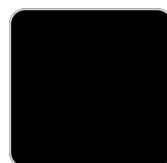
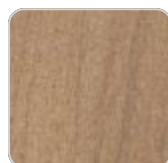
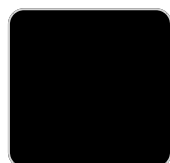
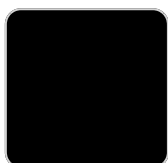
smoked



tortora stone



black stone



VONDON

cream stone



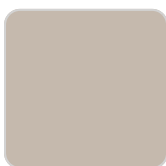
white (white edge)

gray stone



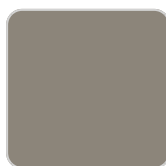
oak2

walnut



ecru

green stone

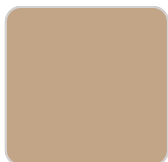


tortora

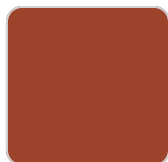
oak1



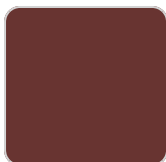
cream



camel



clay



garnet



brown



green



blue



gray



anthracite



ocean

TEMPERED GLASS

Ref. 66105

Ref. 66108

Ambients

