

## Faz table base ø80x105h

by Ramón Esteve

Vondom's Faz collection, designed by Ramón Esteve, is one of the firm's most iconic collections. It stands out for its modular design and sophistication, representing harmony, serenity and timelessness through mineral and emphatic shapes. Faz transforms environments with its unique combination of material and light, creating an enveloping and exclusive atmosphere.



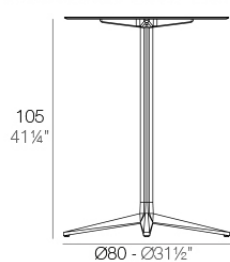
## Info

---

### Description

Weight: 6.56 Kg

BASE 4 LEGS - BASE 4 PATAS



fixed top / fijo ref: 54142

fixed for glass / fijo para vidrio ref: 54142V

FAZ BASE MESA Ø80 H105

FAZ TABLE BASE Ø31 1/2" H41 1/4"

TABLE TOPS OPTIONS - OPCIONES SOBRES



69 x 69 cm  
27 1/4" x 27 1/4"

## Finishes

---

### finishes

---

#### ALUMINIUM BASE

Ref. 54142V



white



smoked



ecru



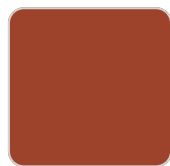
tortora



cream



camel



clay



garnet



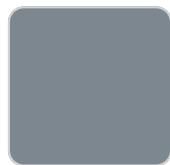
brown



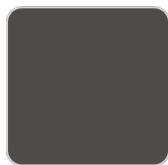
green



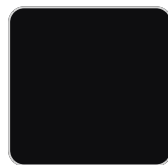
blue



gray



anthracite



black



ocean

Powder coated aluminum base with non collapsable aluminum attachment powder coated, made exclusively for our glass tops.

## Ambients

---

