

Quartz chair

by Ramón Esteve

Created by Ramón Esteve for Vondom, it offers a perfect blend of elegance and functionality in outdoor furniture. With an orthogonal geometry and triangular profiles, this collection stands out for its visual lightness and timeless design.

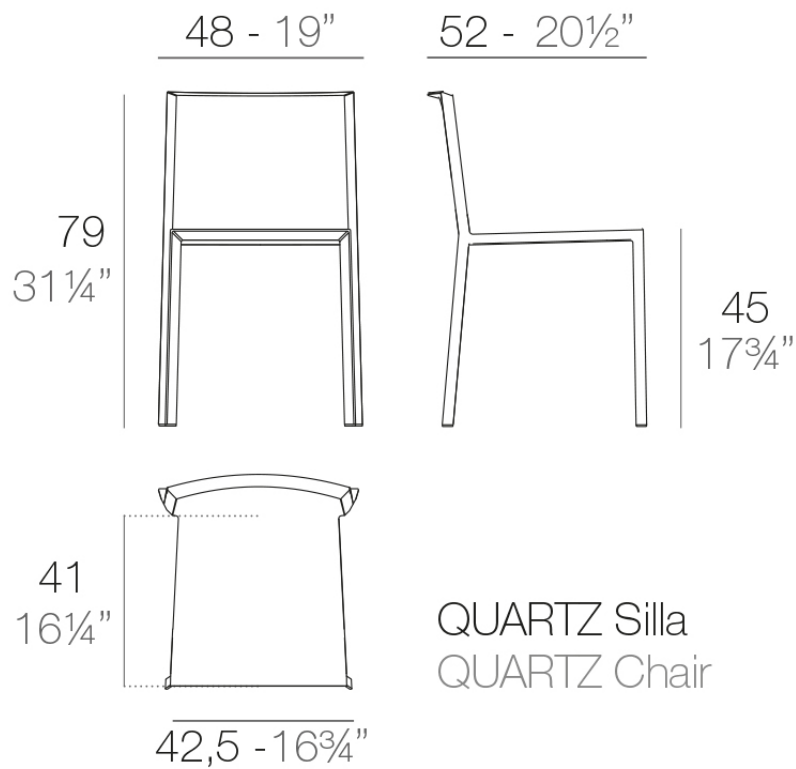


Info

Description

Injected polypropylene with fiber glass. Stackable. Item suitable for indoor and outdoor use.

Weight: 3 Kg



Finishes

finishes

Basic

Ref. 54194



white



black



ecru



tortora

Available in various colors

fabric

BAIONA

Ref. 54194CO



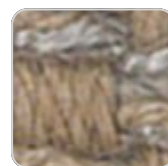
black 10114 baiona



clay 10106 baiona



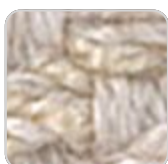
gray 10113 baiona



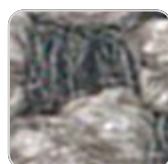
camel 10104 baiona



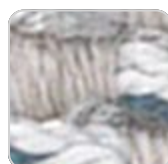
blue 10112 baiona



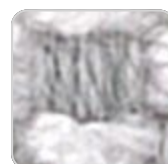
cream 10103 baiona



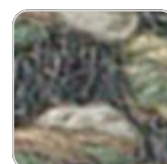
tortora 10102 baiona



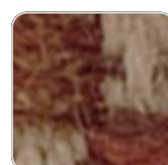
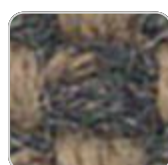
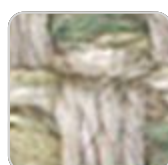
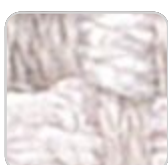
ocean 10111 baiona



ecru 10101 baiona



green 10110 baiona



white 10100 baiona

jade 10109 baiona

brown 10108 baiona

garnet 10107 baiona

Group 1C. High density 100% acrylic fabric, which provides a solid feel. It has an irregular pattern that adds a handcrafted touch.

CALELLA

Ref. 54194CO



blue 10127 calella



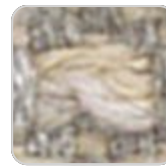
jade 10126 calella



clay 10125 calella



mustard 10124 calella



cream 10123 calella



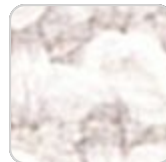
tortora 10122 calella



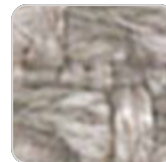
anthracite 10129
calella



ecru 10121 calella



white 10120 calella



gray 10128 calella

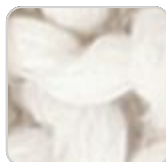
Group 1C. PFAS-free 100% acrylic fabric with a rich and unusual texture and an exceptional softness, which enhances the comfort of the furniture.

FISTERRA

Ref. 54194CO



cream 10132 fisterra



white 10130 fisterra



ecru 10131 fisterra



tortora 10135 fisterra



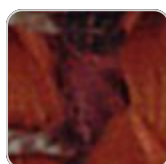
camel 10134 fisterra



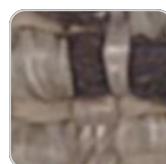
peach 10146 fisterra



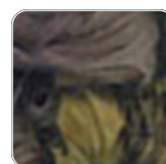
clay 10137 fisterra



garnet 10138 fisterra



brown 10136 fisterra



olive 10145 fisterra

VONDOM



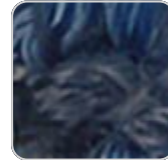
jade 10139 fisterra



green 10140 fisterra



ocean 10141 fisterra



blue 10142 fisterra



gray 10143 fisterra



anthracite 10144
fisterra



black 10147 fisterra

Group 1C. 100% acrylic fabric, with a distinctive irregular marbled pattern and a soft feel.

PORTONOVO Ref. 54194CO



camel 10154
portonovo



blue 10162 portonovo



ocean 10161
portonovo



cream 10153
portonovo



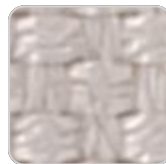
green 10160
portonovo



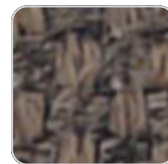
tortora 10152
portonovo



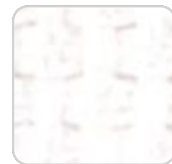
jade 10159 portonovo



ecru 10151 portonovo



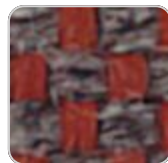
brown 10158
portonovo



white 10150
portonovo



black 10165
portonovo



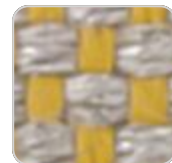
garnet 10157
portonovo



clay 10156 portonovo



anthracite 10164
portonovo



mustard 10155
portonovo



gray 10163 portonovo

VONDOM

Group 1A. 100% acrylic fabric, with a flat and simple design, which adapts to any decorative style.

ALTEA

Ref. 54194CO



tortora 1102 altea



white 1100 altea



camel 1120 altea



clay 1122 altea



garnet 1106 altea



brown 1104 altea



jade 1125 altea



ocean 1123 altea



gray 1101 altea



anthracite 1124 altea



black 1105 altea

Group 1A. Soft outdoor fabric with leather-like texture.

AROUSA

Ref. 54194CO



tortora 1209 arousa



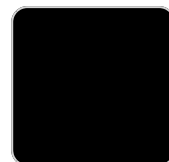
camel 1230 arousa



clay 1231 arousa



brown 1214 arousa



jade 1235 arousa



gray 1208 arousa



anthracite 1210
arousa

VONDOM

Group 1B. Soft outdoor fabric with shiny finish.

Ambients

