

Quartz dining table ø69

by Ramón Esteve

Created by Ramón Esteve for Vondom, it offers a perfect blend of elegance and functionality in outdoor furniture. With an orthogonal geometry and triangular profiles, this collection stands out for its visual lightness and timeless design.

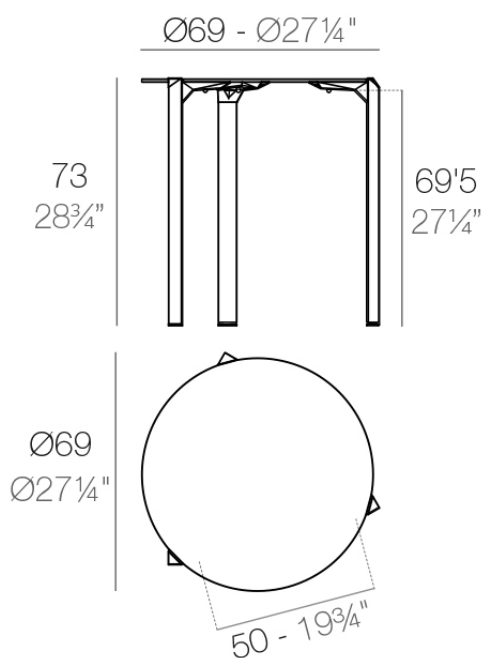


Info

Description

Made from polypropylene and reinforced with fiberglass manufactured by gas injection. Available in various colors. Suitable for indoor and outdoor use.

Weight: 6.53 Kg



QUARTZ Mesa Ø69
QUARTZ Table Ø27 1/4"

Finishes

finishes

Basic

Ref. 54199



white



black



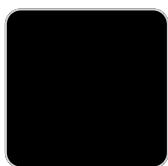
ecru

Available in various colors

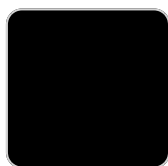
tabletops

HPL Solid Core

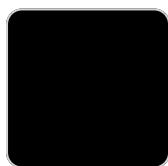
Ref. VVAR02349



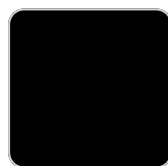
gray stone



white stone



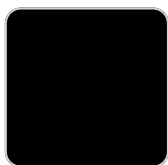
cream stone



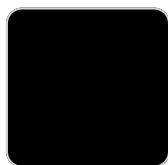
green stone



walnut



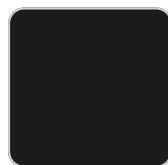
ecru stone



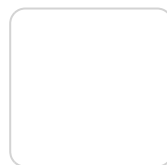
tortora stone



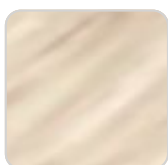
smoked



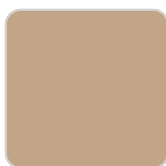
black stone



white (white edge)

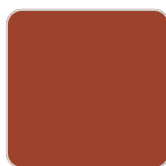


oak1



camel

ecru



clay

oak2



garnet

tortora



brown

cream



green



blue



gray

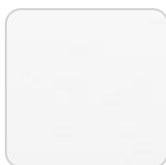


anthracite



ocean

HPL Black Edge Ref. VVAR02349



white(black edge)



ecru(black edge)



black(black edge)

Ref. VVAR02349



white (white edge)

