

Quartz dining table 59x59

by Ramón Esteve

Created by Ramón Esteve for Vondom, it offers a perfect blend of elegance and functionality in outdoor furniture. With an orthogonal geometry and triangular profiles, this collection stands out for its visual lightness and timeless design.

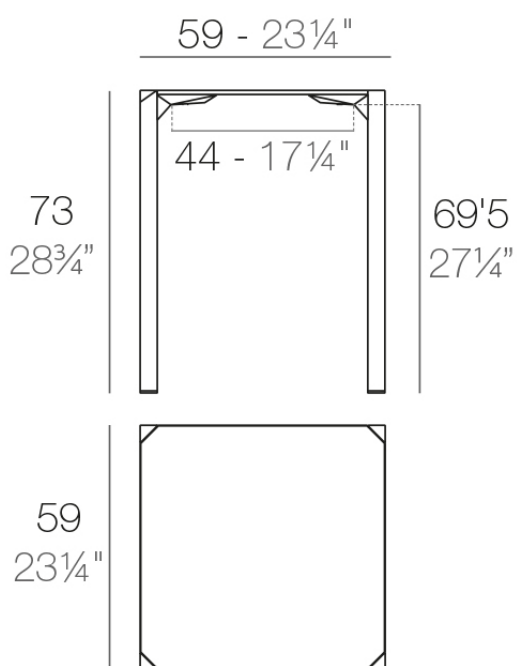


Info

Description

Made from polypropylene and reinforced with fiberglass manufactured by gas injection. Available in various colors. Suitable for indoor and outdoor use.

Weight: 0.78 Kg



QUARTZ Mesa 59 x 59
QUARTZ Table 23 1/4" x 23 1/4"

Finishes

finishes

Basic

Ref. 54203



white



black



ecru

Available in various colors

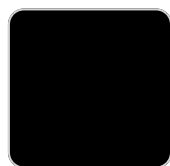
tabletops

HPL Solid Core

Ref. VVAR02391



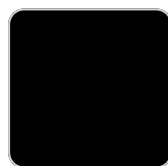
smoked



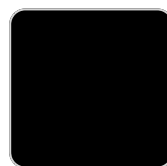
tortora stone



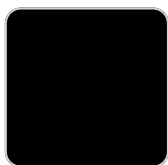
black stone



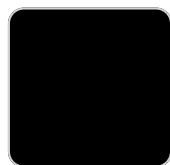
gray stone



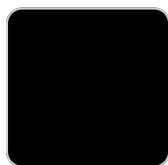
white stone



cream stone



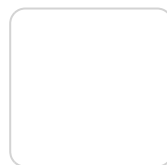
green stone



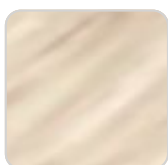
ecru stone



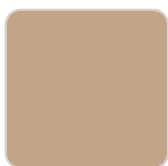
walnut



white (white edge)

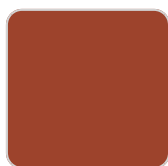


oak1



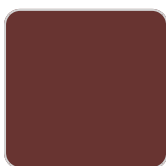
camel

oak2



clay

ecru



garnet

tortora



brown

cream



green



blue



gray

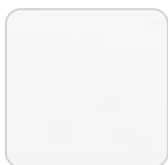


anthracite



ocean

HPL Black Edge Ref. VVAR02391



white(black edge)



ecru(black edge)



black(black edge)

