

Frame aluminium table 300x120x74

by Ramón Esteve

Frame, outdoor collection by Ramon Esteve, comes from generating serene and timeless shapes using the framework as elementary geometry. The endless possibilities offered by the material using advanced technology, was the motivation to explore the limits.

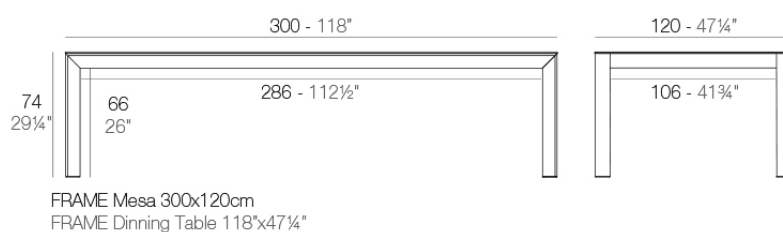


Info

Description

Extruded aluminum with cast lacquered aluminum base. HPL Table top.
Item suitable for indoor and outdoor use. HPL Table top.

Weight: 70.7 Kg



Finishes

finishes

HPL Black Edge Top
Ref. 54242F



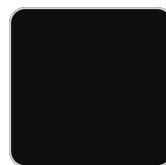
white



gray



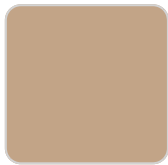
anthracite



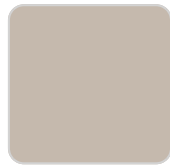
black



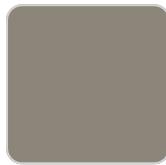
cream



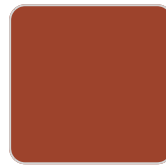
camel



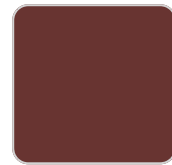
ecru



tortora



clay



garnet



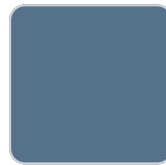
brown



smoked



green



ocean



blue

Lacquered aluminium profile.

HPL Solid Core Top
Ref. 54242FB



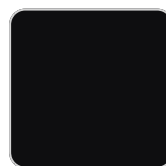
white



gray



anthracite

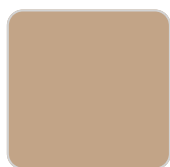


black



cream

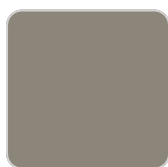
VONDOM



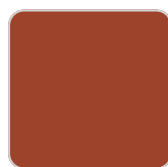
camel



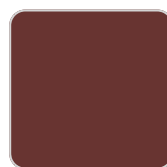
ecru



tortora



clay



garnet



brown



smoked



green



ocean



blue

Lacquered aluminium profile.

tabletops

Dekton

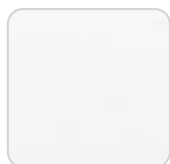
Ref. 54242FM

CERAMIC SURFACE

tabletops

HPL Black Edge Top

Ref. VVAR02597



white(black edge)



ecru(black edge)



black(black edge)

HPL Solid Core Top

Ref. VVAR02598

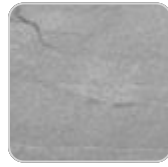
VONDOM



tortora stone



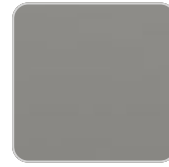
black stone



gray stone



white stone



smoked



ecru stone



white (white edge)



oak1



ecru



oak2



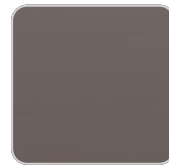
tortora



cream



garnet



brown



green



blue



anthracite

Ambients

