

Faz wood high table 60x60x105

by Ramón Esteve

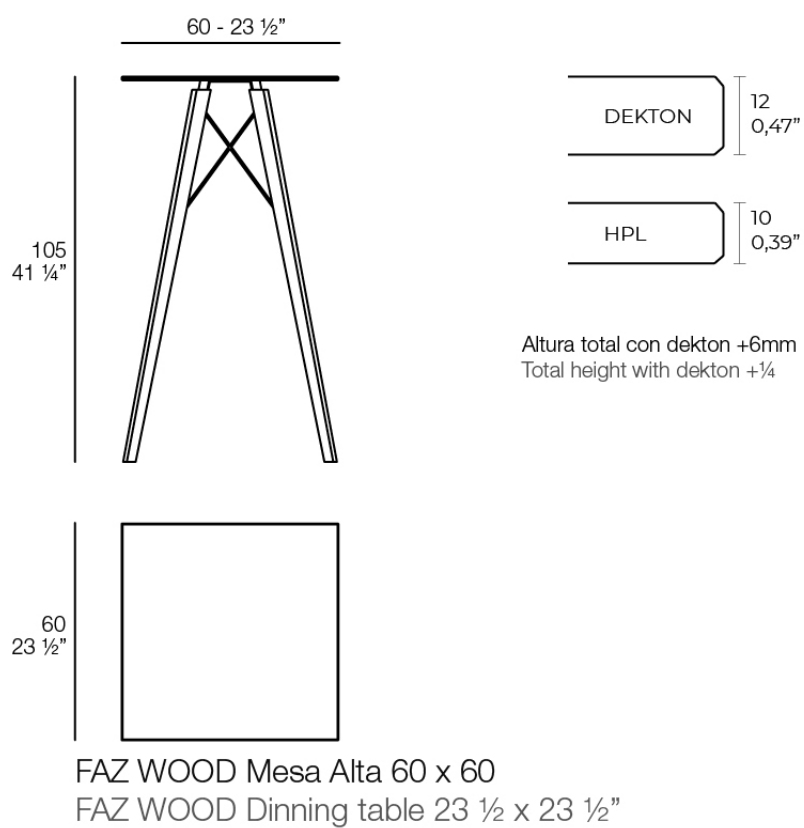
Vondom's Faz collection, designed by Ramón Esteve, is one of the firm's most iconic collections. It stands out for its modular design and sophistication, representing harmony, serenity and timelessness through mineral and emphatic shapes. Faz transforms environments with its unique combination of material and light, creating an enveloping and exclusive atmosphere.



Info

Description

Weight: 11.19 Kg



Finishes

tabletops

HPL Black Edge

Ref. 54317



white



ecru



black

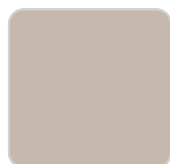
HPL black edge

HPL Solid Core

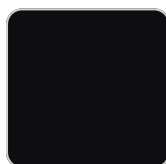
Ref. 54317B



white



ecru



black

HPL solid core

estructura

Aluminium

Ref. VVAR03098



white

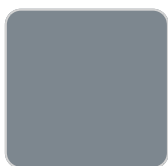


ecru



black

Ref. VVAR03098



gray

legs

Ash

Ref. VVAR03082



wood 1



wood 2

Ambients

