

Faz wood high table ø60x105

by Ramón Esteve

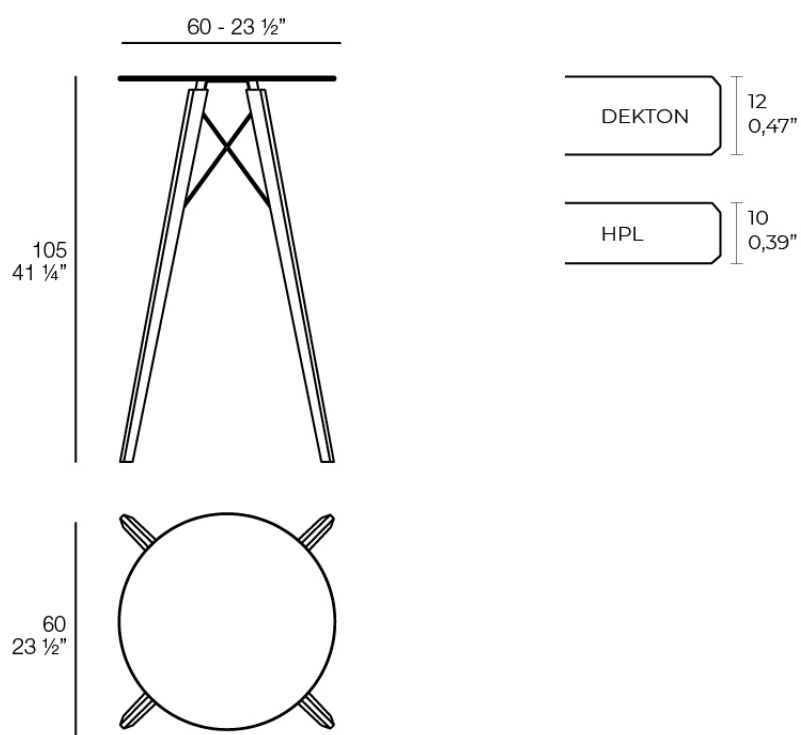
Vondom's Faz collection, designed by Ramón Esteve, is one of the firm's most iconic collections. It stands out for its modular design and sophistication, representing harmony, serenity and timelessness through mineral and emphatic shapes. Faz transforms environments with its unique combination of material and light, creating an enveloping and exclusive atmosphere.



Info

Description

Weight: 10.17 Kg



FAZ WOOD Mesa Alta Ø60
FAZ WOOD Dinning table Ø23 1/2"

Finishes

tabletops

HPL Black Edge Top

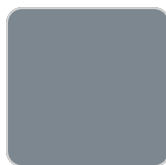
Ref. 54318



white



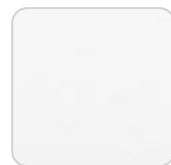
ecru



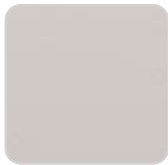
gray



black



white(black edge)



ecru(black edge)



black(black edge)

HPL black edge

HPL Solid Core Top

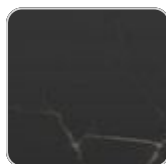
Ref. 54318B



ecru stone



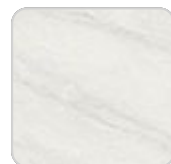
tortora stone



black stone



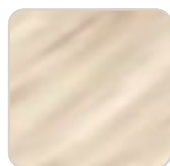
gray stone



white stone



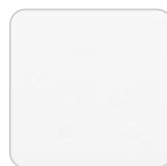
smoked



oak1



white



white (white edge)



ecru

VONDOM



oak2



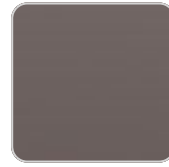
tortora



cream



garnet



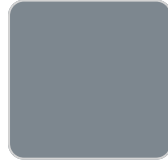
brown



green



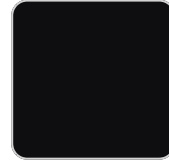
blue



gray



anthracite



black

HPL solid core

estructura

Aluminium

Ref. VVAR03098



white

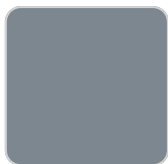


ecru



black

Ref. VVAR03098



gray

legs

Ash

Ref. VVAR03082



wood 1



wood 2

Ambients

