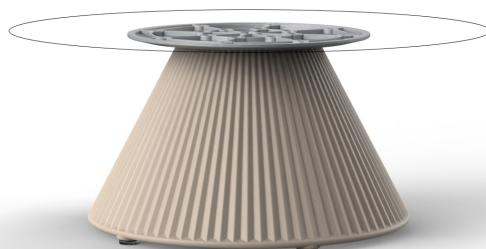


## Gatsby base ø40x25 s30

by Ramón Esteve

The Gatsby collection, designed by Ramón Esteve, evokes the elegance and glamour of Art Deco, reminding us of the Roaring Twenties. Inspired by the bonanza, parties and excesses of that era, Gatsby combines intricate design with extraordinary simplicity, reflecting the American dream.



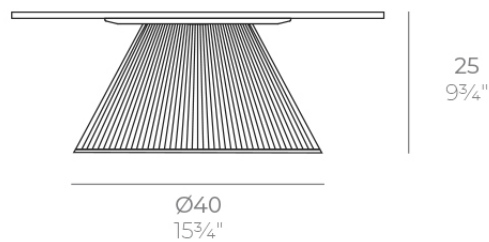
## Info

---

### Description

The Gatsby tables, designed by Ramón Esteve for Vondom, evoke the essence of Art Deco and the opulence of the 1920s. Available with a polyethylene base in circular or square shapes, these tables stand out for their versatility and elegance.

Weight: 2.38 Kg



GATSBY Mesa Base Redonda Ø40x25cm S30  
GATSBY Round Base Table Ø40x25cm S30  
ref. 54440

#### TABLE TOP - SOBRE

- Ø50 cm  
Ø19 1/4"
- Ø59 cm  
Ø23 1/4"
- Ø69 cm  
Ø27 1/4"

## Finishes

---

### finishes

---

Basic

Ref. 54440



white 2001



black 2002



ecru 2003



tortora 2004



gray 2005



anthracite 2006



brown 2008



garnet 2015



green 2016



cream 2017



blue 2018



camel 2020



clay 2022



ecru granite



cream granite



ice 2101

Matt Polyethylene

### tabletops

---

HPL Black Edge Top

Ref. 66126

# VONDOM



white(black edge)



ecru(black edge)



black(black edge)

## HPL Solid Core Top Ref. 66126B



cream stone



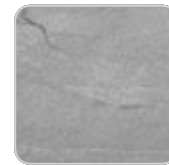
black stone



walnut



green stone



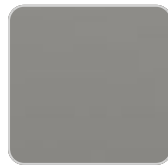
gray stone



ecru stone



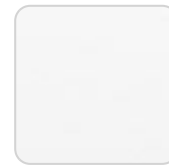
white stone



smoked



tortora stone



white (white edge)



oak1



oak2



ecru



tortora



cream



camel



clay



garnet



brown



green



blue



gray



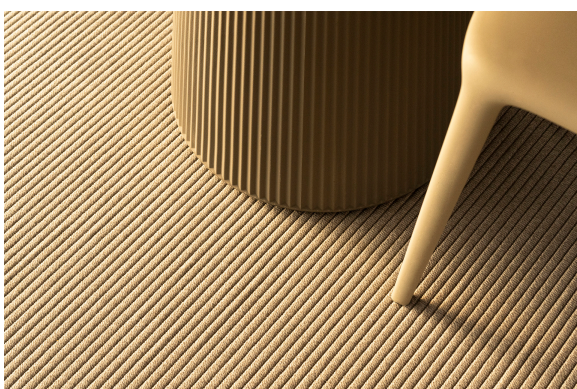
anthracite



ocean

## Ambients

---



# VONDOM

