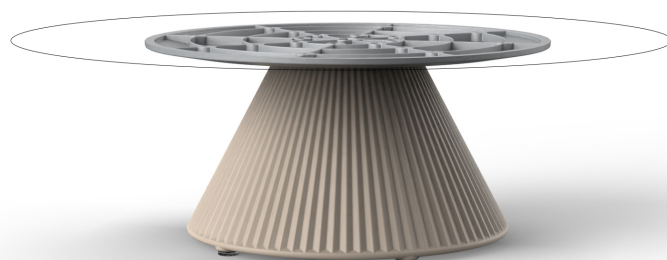


Gatsby base ø40x25 s50

by Ramón Esteve

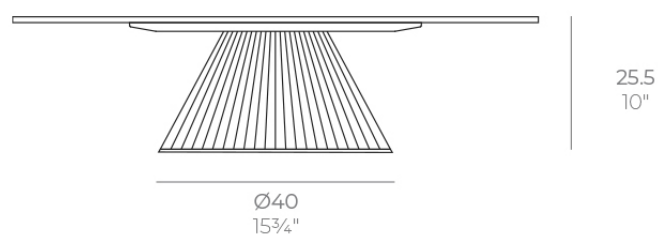
The Gatsby collection, designed by Ramón Esteve, evokes the elegance and glamour of Art Deco, reminding us of the Roaring Twenties. Inspired by the bonanza, parties and excesses of that era, Gatsby combines intricate design with extraordinary simplicity, reflecting the American dream.



Info

Description

Weight: 2.44 Kg



GATSBY Mesa Base Redonda Ø40x25.5cm S50
GATSBY Round Base Table Ø40x25.5cm S50
ref. 54441

TABLE TOP - SOBRE

- Ø79 cm
Ø31"
- Ø89 cm
Ø35"
- Ø100 cm
Ø39 1/4"

Finishes

finishes

Basic

Ref. 54441



white 2001



black 2002



ecru 2003



tortora 2004



gray 2005



anthracite 2006



brown 2008



garnet 2015



green 2016



cream 2017



blue 2018



camel 2020



clay 2022



ecru granite



cream granite



ice 2101

Matt Polyethylene

tabletops

HPL Black Edge Top

Ref. 66129

VONDOM



white(black edge)



ecru(black edge)



black(black edge)

HPL Solid Core Top Ref. 66129B



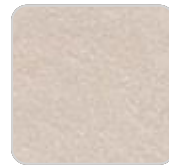
tortora stone



smoked



walnut



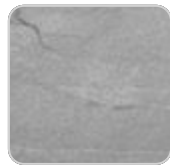
cream stone



black stone



green stone



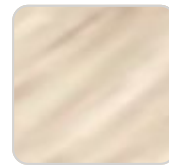
gray stone



ecru stone



white stone



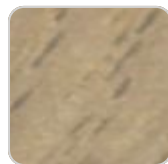
oak1



white (white edge)



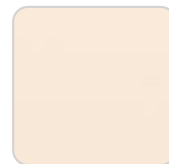
ecru



oak2



tortora



cream



camel



clay



garnet



brown



green



blue



gray

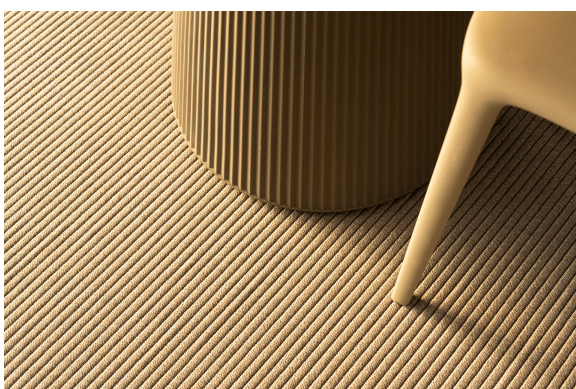


anthracite



ocean

Ambients



VONDOM

