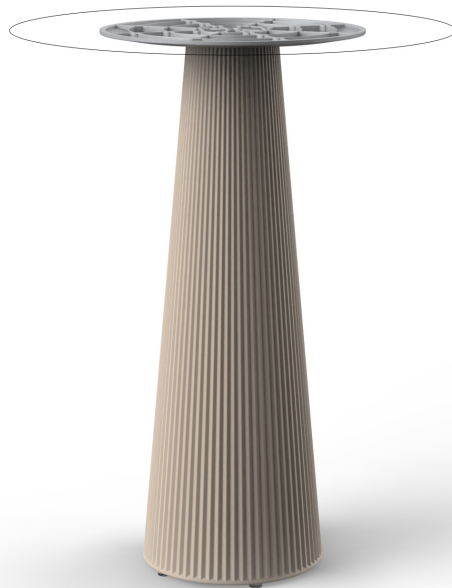


Gatsby base ø35x105cm s50

by Ramón Esteve

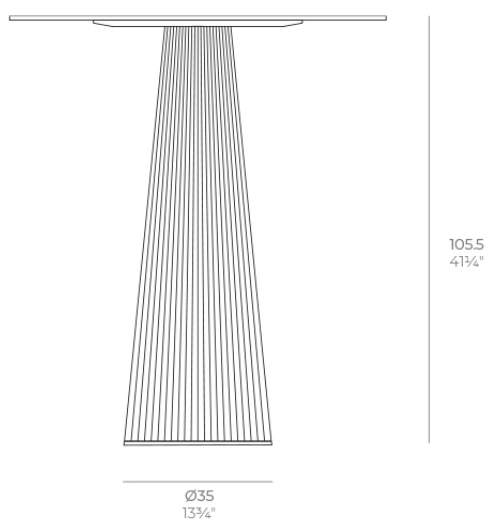
The Gatsby collection, designed by Ramón Esteve, evokes the elegance and glamour of Art Deco, reminding us of the Roaring Twenties. Inspired by the bonanza, parties and excesses of that era, Gatsby combines intricate design with extraordinary simplicity, reflecting the American dream.



Info

Description

Weight: 9.1 Kg



GATSBY Mesa Base Redonda Ø35x105.5cm S50
GATSBY Round Base Table Ø35x105.5cm S50
ref. 54461

TABLE TOP - SOBRE

● Ø79 cm
Ø31"

Finishes

finishes

Basic

Ref. 54461



white 2001



black 2002



ecru 2003



tortora 2004



gray 2005



anthracite 2006



brown 2008



garnet 2015



green 2016



cream 2017



blue 2018



camel 2020



clay 2022



ecru granite



cream granite



ice 2101

Matt Polyethylene

tabletops

HPL Black Edge Top

Ref. 66127

VONDOM



white(black edge)



ecru(black edge)



black(black edge)

HPL Solid Core Top Ref. 66127B



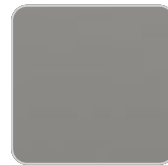
white (white edge)



ecru



tortora



smoked



cream



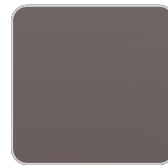
camel



clay



garnet



brown



green



ocean



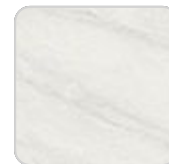
blue



gray



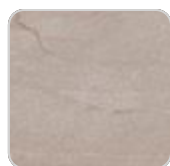
anthracite



white stone



cream stone



ecru stone



tortora stone



green stone



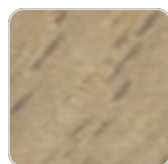
gray stone



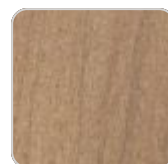
black stone



oak1



oak2



walnut

Ambients

