

## Gatsby base ø35x65cm s30

by Ramón Esteve

The Gatsby collection, designed by Ramón Esteve, evokes the elegance and glamour of Art Deco, reminding us of the Roaring Twenties. Inspired by the bonanza, parties and excesses of that era, Gatsby combines intricate design with extraordinary simplicity, reflecting the American dream.

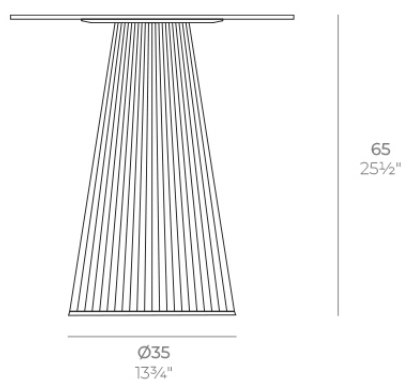


## Info

---

### Description

Weight: 3.75 Kg



GATSBY Mesa Base Redonda Ø35x65cm S30  
GATSBY Round Base Table Ø35x65cm S30  
ref. 54479

#### TABLE TOP - SOBRE

- Ø50 cm  
Ø19 3/4"
- Ø59 cm  
Ø23 3/4"
- Ø69 cm  
Ø27 3/4"

## Finishes

---

### finishes

---

Basic

Ref. 54479



white 2001



black 2002



ecru 2003



tortora 2004



gray 2005



anthracite 2006



brown 2008



garnet 2015



green 2016



cream 2017



blue 2018



camel 2020



clay 2022



ecru granite



cream granite



ice 2101

Matt Polyethylene

### tabletops

---

HPL Black Edge Top

Ref. 66126

# VONDOM



white(black edge)



ecru(black edge)



black(black edge)

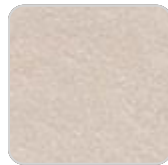
## HPL Solid Core Top Ref. 66126B



smoked



tortora stone



cream stone



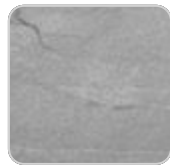
black stone



walnut



green stone



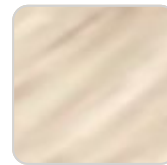
gray stone



ecru stone



white stone



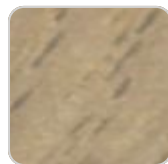
oak1



white (white edge)



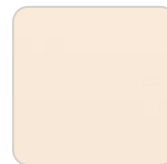
ecru



oak2



tortora



cream



camel



clay



garnet



brown



green



blue



gray



anthracite



ocean

## Ambients

---

