

Vineyard extra-large coffee table legs

by Ramón Esteve

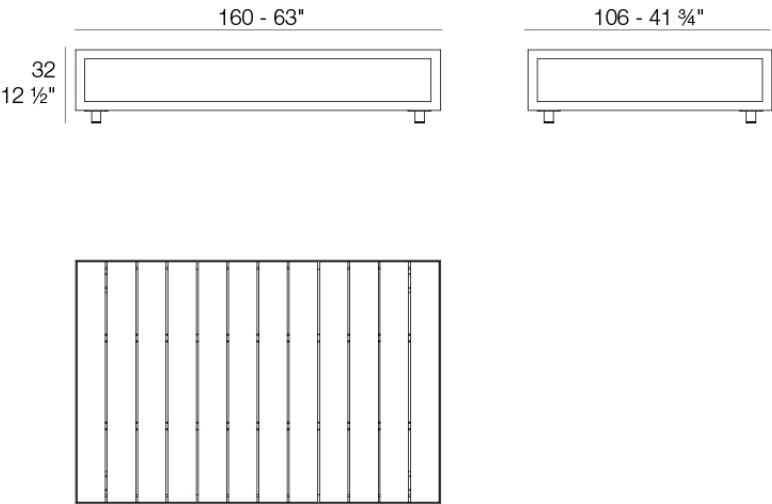
The Vineyard collection, designed by Ramón Esteve, captures the essence of Mediterranean style, combining elegance and comfort in each of its pieces. Inspired by vineyards and outdoor living, this collection is perfect for creating relaxed and welcoming environments.



Info

Description

Weight: 60 Kg



Versión con patas
Leg version

Finishes

finishes

Weathered

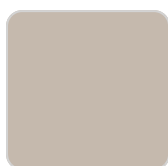
Ref. 54504ESU



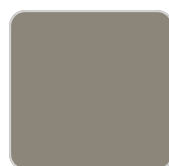
white



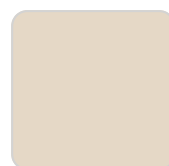
smoked



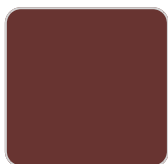
ecru



tortora



cream



garnet



brown



green



blue



gray



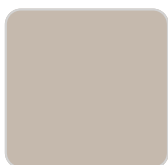
anthracite



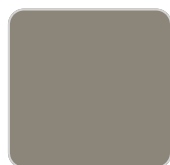
black

Natural

Ref. 54504SU



ecru



tortora



cream

HPL Solid Core

Ref. 54504ZSU



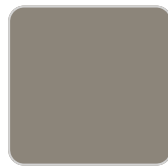
white



smoked



ecru



tortora



cream



garnet



brown



green



blue



gray



anthracite



black

panel/top

Teak

Ref. 54504AA



natural teak



weathered teak

Ambients

