

Vineyard dining table wheel

by Ramón Esteve

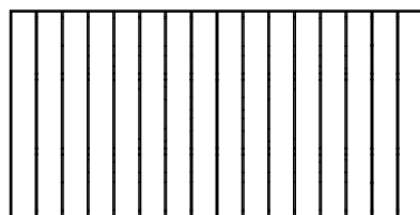
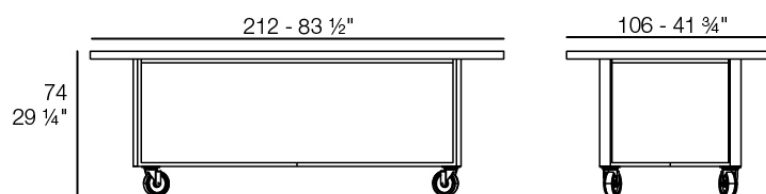
The Vineyard collection, designed by Ramón Esteve, captures the essence of Mediterranean style, combining elegance and comfort in each of its pieces. Inspired by vineyards and outdoor living, this collection is perfect for creating relaxed and welcoming environments.



Info

Description

Weight: 32 Kg



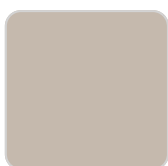
VINEYARD Mesa Comedor
VINEYARD Dining Table

Finishes

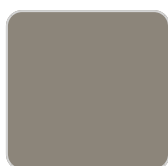
finishes

ALUMINIUM

Ref. 54505ZSU



ecru



tortora



cream

panel/top

Solid Core

Ref. 54505AA



ecru stone



tortora stone



black stone



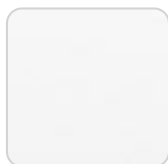
gray stone



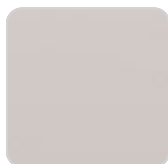
white stone



smoked



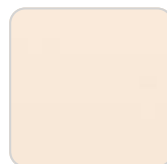
white (white edge)



ecru



tortora



cream



garnet



brown



green



blue



anthracite

Solid Core wood
Ref. 54505AA



walnut



oak1



oak2

Teak
Ref. 54505AA



natural teak



weathered teak

Ambients

