

## Solid sofa 2 pax

by Stefano Giovannoni

Solid outdoor furniture collection, designed by Stefano Giovannoni for Vondom. It's a group of items which, although **being light offer stability** thanks to their geometric and well-defined cut, as if they were sculpted from stone.

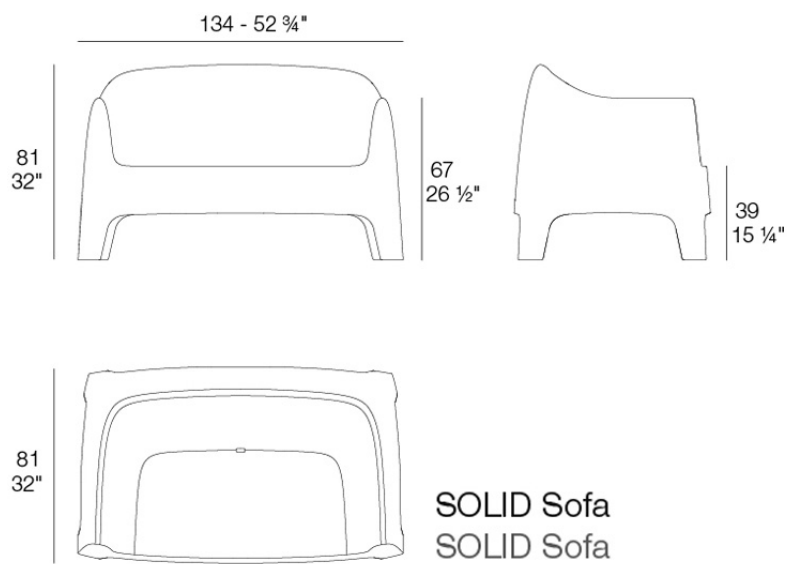


## Info

---

### Description

Weight: 19 Kg



## Finishes

---

### finishes

---

Basic

Ref. 55034



white



black



ecru

Available in various colors

### fabric

---

BAIONA

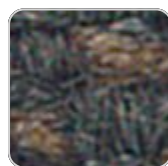
Ref. 55034CO



brown 10108 baiona



garnet 10107 baiona



black 10114 baiona



clay 10106 baiona



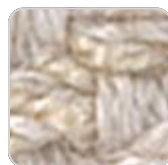
gray 10113 baiona



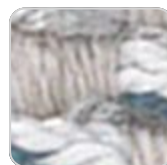
camel 10104 baiona



blue 10112 baiona



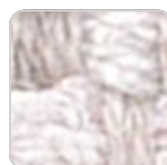
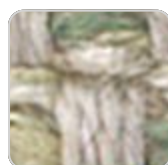
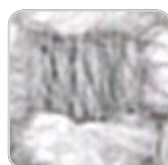
cream 10103 baiona



ocean 10111 baiona



tortora 10102 baiona



green 10110 baiona

ecru 10101 baiona

jade 10109 baiona

white 10100 baiona

Group 1C. High density 100% acrylic fabric, which provides a solid feel. It has an irregular pattern that adds a handcrafted touch.

## CALELLA

Ref. 55034CO



anthracite 10129  
calella



ecru 10121 calella



gray 10128 calella



white 10120 calella



blue 10127 calella



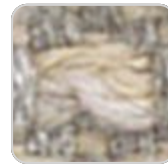
jade 10126 calella



clay 10125 calella



mustard 10124 calella



cream 10123 calella



tortora 10122 calella

Group 1C. PFAS-free 100% acrylic fabric with a rich and unusual texture and an exceptional softness, which enhances the comfort of the furniture.

## FISTERRA

Ref. 55034CO



cream 10132 fisterra



white 10130 fisterra



ecru 10131 fisterra



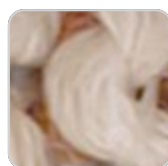
tortora 10135 fisterra



camel 10134 fisterra



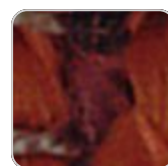
mustard 10133  
fisterra



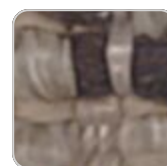
peach 10146 fisterra



clay 10137 fisterra



garnet 10138 fisterra



brown 10136 fisterra

# VONDOM



olive 10145 fisterra



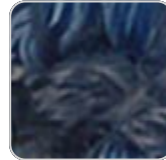
jade 10139 fisterra



green 10140 fisterra



ocean 10141 fisterra



blue 10142 fisterra



gray 10143 fisterra



anthracite 10144  
fisterra



black 10147 fisterra

Group 1C. 100% acrylic fabric, with a distinctive irregular marbled pattern and a soft feel.

## PORTONOVO

Ref. 55034CO



gray 10163 portonovo



mustard 10155  
portonovo



blue 10162 portonovo



camel 10154  
portonovo



ocean 10161  
portonovo



cream 10153  
portonovo



green 10160  
portonovo



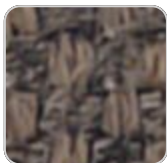
tortora 10152  
portonovo



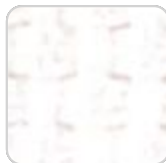
jade 10159 portonovo



ecru 10151 portonovo



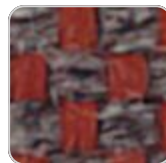
brown 10158  
portonovo



white 10150  
portonovo



black 10165  
portonovo



garnet 10157  
portonovo



anthracite 10164  
portonovo



clay 10156 portonovo

# VONDOM

Group 1A. 100% acrylic fabric, with a flat and simple design, which adapts to any decorative style.

## ALTEA

Ref. 55034CO



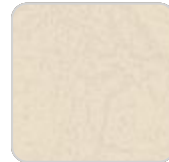
tortora 1102 altea



white 1100 altea



ecru 1111 altea



cream 1103 altea



camel 1120 altea



clay 1122 altea



garnet 1106 altea



brown 1104 altea



jade 1125 altea



ocean 1123 altea



blue 1114 altea



gray 1101 altea



anthracite 1124 altea



black 1105 altea

Group 1A. Soft outdoor fabric with leather-like texture.

## AROUSA

Ref. 55034CO



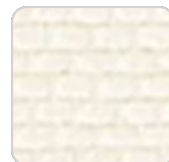
ecru 1221 arousa



white 1219 arousa



tortora 1209 arousa



cream 1220 arousa



camel 1230 arousa



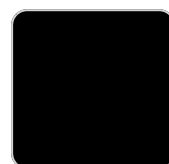
clay 1231 arousa



garnet 1223 arousa



brown 1214 arousa



jade 1235 arousa



blue 1222 arousa

# VONDOM



gray 1208 arousa



anthracite 1210  
arousa

Group 1B. Soft outdoor fabric with shiny finish.

