

## Mari-sol table base ø80 h:50cm

by Eugeni Quitllet

The collection, designed by Eugeni Quitllet, combines advanced technology and captivating design. Mari-Sol adapts perfectly to any environment, whether on an urban terrace or in a garden by the sea. Its elegant shape and versatile character make it the ideal piece to embellish and optimize both indoor and outdoor spaces.



## Info

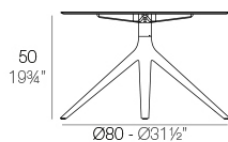
---

### Description

Extruded aluminum tube with cast aluminum base coated with epoxy baked painting. Item suitable for indoor and outdoor use. Table top not included.

Weight: 4.67 Kg

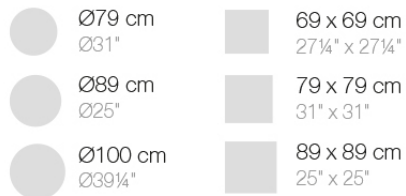
BASE 4 LEGS - BASE 4 PATAS



fixed top / fijo ref: 65015  
fixed for glass / fijo para vidrio ref: 65015V

MARI-SOL BASE MESA Ø80 H50  
MARI-SOL TABLE BASE Ø31 1/2" H19 3/4"

TABLE TOPS OPTIONS - OPCIONES SOBRES



## Finishes

---

### finishes

---

Fixed

Ref. 65015



white



gray



anthracite



black



cream



camel



ecru



tortora



clay



garnet



brown



smoked



green



ocean



blue

Powder coated aluminum base with non collapsable attachment made of polyamide and fiber glass

Fixed for glass

Ref. 65015V



white



gray



anthracite



black



cream

# VONDOM



camel



ecru



tortora



clay



garnet



brown



smoked



green



ocean



blue

Powder coated aluminum base with non collapsable aluminum attachment powder coated, made exclusively for our glass tops.

## tabletops

---

### HPL Black Edge Top

Ref. 66110



white(black edge)



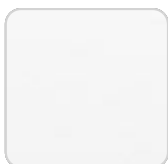
ecru(black edge)



black(black edge)

### HPL Solid Core Top

Ref. 66110B



white (white edge)



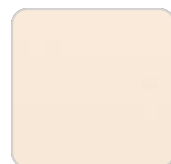
ecru



tortora



smoked



cream



# VONDOM

camel



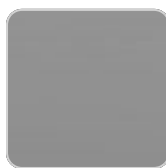
ocean

clay



blue

garnet



gray

brown

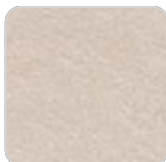


anthracite

green



white stone



cream stone



ecru stone



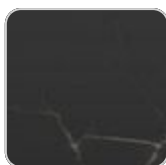
tortora stone



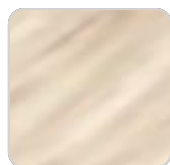
green stone



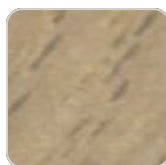
gray stone



black stone



oak1



oak2



walnut

## TEMPERED GLASS

Ref. 66105

Ref. 66108

## Ambients

---



# VONDOM

