

Mari-sol 3-legged double table base

by Eugeni Quitllet

The collection, designed by Eugeni Quitllet, combines advanced technology and captivating design. Mari-Sol adapts perfectly to any environment, whether on an urban terrace or in a garden by the sea. Its elegant shape and versatile character make it the ideal piece to embellish and optimize both indoor and outdoor spaces.



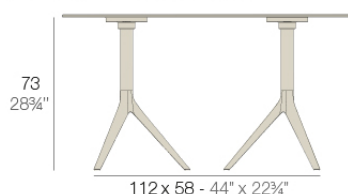
Info

Description

Extruded aluminum tube with cast aluminum base coated with epoxy baked painting. Item suitable for indoor and outdoor use. Table top not included.

Weight: 6.88 Kg

BASE 3 LEGS - BASE 3 PATAS



fixed top / fijo *ref.6503I*

collapsible top / abatible *ref.6503IT*

MARI-SOL BASE DOBLE 112x58 H73

MARI-SOL DOUBLE BASE 44x22 3/4 inch H28 3/4 inch

TABLE TOPS OPTIONS - OPCIONES SOBRES



119 x 69 cm

46 3/4 inch x 27 1/4 inch

Finishes

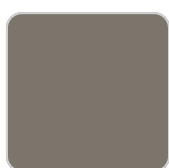
finishes

ALUMINIUM BASE

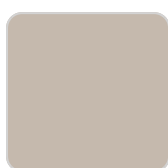
Ref. 65031T



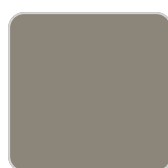
white



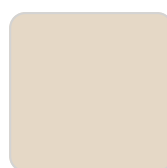
smoked



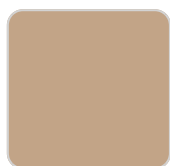
ecru



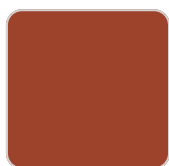
tortora



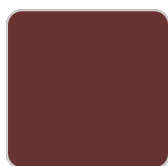
cream



camel



clay



garnet



brown



green



blue



gray



anthracite



black



ocean

Powder coated aluminum base with 90° collapsable attachment made of polyamide and fiber glass

tabletops

HPL

Ref. 66031



white 201



ecru 2003



black 2002

HPL black edge

